

5M SERIES

75 -115 Horsepower Utility Tractors



JOHN DEERE



The King of Comfort

The John Deere 5M Series Tractors come with a set of enhancements that give you an incredible operating experience. New engine side frames reduce the turning radius from 15.8 ft. (4.8 m) to 13.8 ft. (4.2 m). With the integration of an electronic de-clutch button into the gear shift lever, you no longer need to foot clutch when shifting gears.

The improved braking system gives you a better feel while increasing braking capacity. And the new electrical system allows you to seamlessly plug and play with John Deere round balers without the need for an additional kit.





CONTENTS

The 5M Series Lineup	4 – 5
Engine	6 – 7
Hydraulics	8 – 9
Cast Iron Frame Design	10 – 11
Performance	12 – 13
Operator Station	14 – 15
Material Handling	16 – 17
John Deere and Frontier Implements	18 – 19
Maintenance/PowerGard™/Attachments	20 – 21
Specifications	22 – 23

5M Series

The New 5M Series Lineup



■ 12% Tighter Turning Radius

■ 23% Increased Payload Capacity

■ No Foot Clutching



THE 5M SERIES UTILITY TRACTORS

MODEL	ENGINE HP	PTO HP
5075M	73.8 (55 kW)	57.7 (43 kW)
5090M	89.2 (66.6 kW)	75 (55.9 kW)
5100M	99.1 (74 kW)	85.0 (63 kW)
5115M	113.9 (85 kW)	100.0 (74.5 kW)

5M Series

More Power When You Need It

John Deere PowerTech™ 4.5 liter turbocharged diesel engines* are artfully built with the legendary craftsmanship our customers have grown to expect. This engine is designed to meet stringent Final Tier 4 (FT4) emissions requirements, while still delivering powerful low-end torque and excellent fuel economy. The turbocharger and high pressure common rail fuel system give you responsive power and outstanding torque reserve – so you can keep pace when pulling heavy loads, or when you're faced with challenging field conditions.

*Except the 5075M which features a 2.9L 3-cylinder PowerTech engine.



Tighter Turning Radius

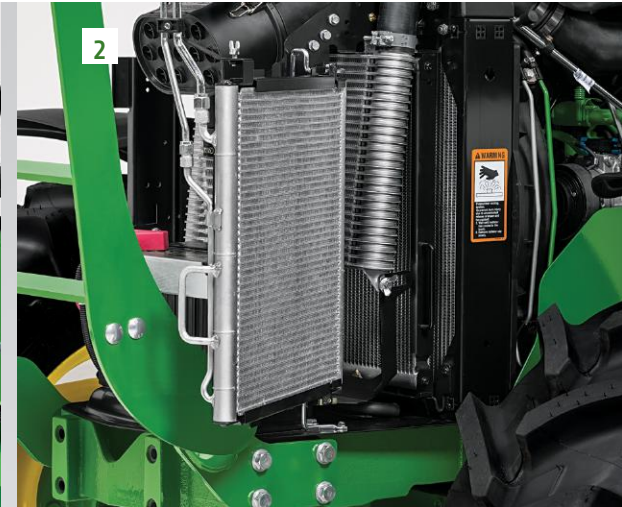
To maximize tractor maneuverability in tight areas, we've introduced new engine side frames to increase the maximum steering angle to 50 degrees, and shorten the turning radius from 15.8 ft. (4.8 m) to 13.8 ft. (4.2 m). This is a 12% tighter turning radius than our previous 5M models.

Air Cooled For Better Fuel Efficiency

Air-to-air aftercooling efficiently cools intake air to help reduce engine emissions while maintaining low-speed torque, transient response time, and peak torque. This allows the engines to meet emission regulations with better fuel economy.

More Options, More Control

At the heart of every John Deere 5M Tractor is a powerful transmission. These transmissions are built at the John Deere factory in Coffeyville, Kansas – a facility dedicated to producing dependable, heavy-duty transmissions that are designed to John Deere standards and built to withstand the rigors of industrial applications. Choose from several options, including a 12F/4R SyncShuttle™ Plus, a 16F/16R PowrReverser™ or go with a 32F/16R PowrReverser, with or without a creeper option as well, that lets you dial-in just the right speed to maximize performance and efficiency.



Clean Cooling Package: Easy as 1,2,3*

5M Tractors offer an efficiently designed cooling package. Accessing the cooling system components is easier than ever and requires no tools. There is an extra screen – which acts as a rigid first-pass filter that catches larger debris, preventing it from working its way into the cooling package. The slide-out condenser makes cleaning and service fast and easy – something that you'll appreciate when you're making hay in dry, dusty conditions. The oil cooler slides out halfway on each side of the tractor for improved access to key maintenance points. The charge air cooler also hinges forward for even more access.



5M Series

Get More Done in a Day

Great views. All around.

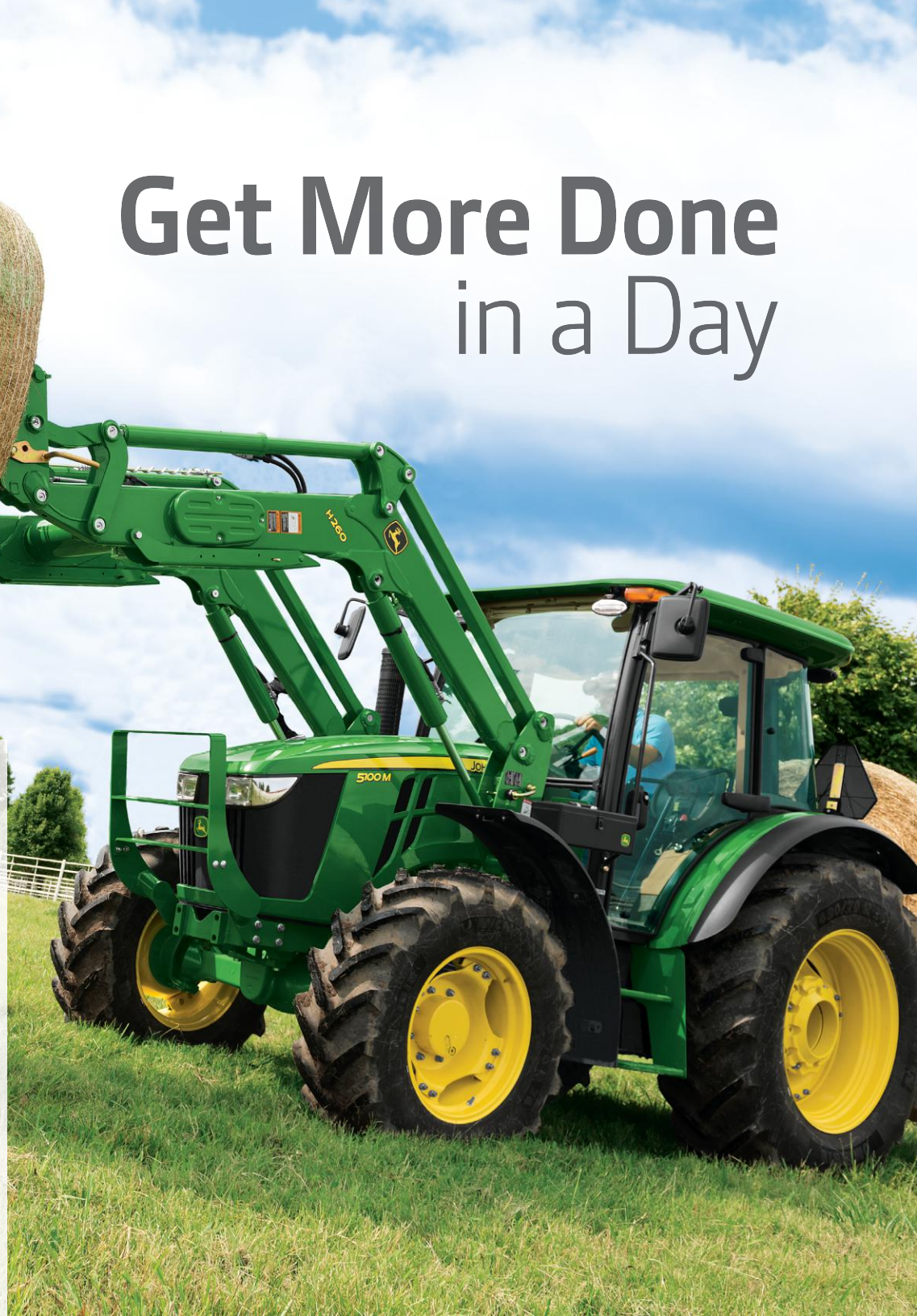
The 5M Series features a sloped hood to give you extra visibility in front of the tractor. Perfect for when you need to do loader work.

Keep your green clean.

To help keep the mud off your tractor, we've added factory installed axle mounted front fenders and cab fender extensions. And for extra convenience we now offer a SCV spillage collector to keep the back of the tractor free from fluid.

Tough tires for any condition.

With radial tire options, you'll be able to get excellent road and field performance in tough conditions. Great traction means you'll get more done in less time.



5M Tractors are designed to maximize productivity and rise to the task at hand with an open-center hydraulic system. This system is engineered to deliver fast, powerful hydraulic flows, enabling you to perform multiple functions when and where you need hydraulic power the most.

Better Braking

To maximize tractor maneuverability in tight areas, we've improved the braking capacity and feel by using an all-new brake valve that reduces the stopping distance when the brakes are applied. These help you maneuver and stop with greater precision and ease.

Intelligently Designed for Power Users

The John Deere 5M hydraulic flow network is a priority-driven, open-center system that is engineered to produce plenty of hydraulic power for any application. Our large valves and solenoids have full range of motion to quickly fold, lift and transport implements, or gently feather them to fine-tune performance. That makes a huge difference when picking up hundreds of round bales or powering external hydraulic motors.



An upgraded valve stack makes it easy to add or replace SCVs simply without having to replace the entire valve block. And conveniently select a less mid SCV option from the factory if you are not using the tractor for loader work.



5M Series

Designed for Strength and Stability



The John Deere 5M Series is built for long hard days in the field. Heavy-duty axles withstand tough field conditions, delivering dependable, trouble-free performance.

Exclusive Mid-Frame Design

With its rugged cast iron design, you get extra strength and rigidity, reducing the twisting forces of uneven terrain, and providing greater stability. You'll also appreciate the additional heft when hauling heavy bales, or transporting heavy 3-point implements.

A cast-iron frame design also translates into a heavier tractor. And this extra weight adds more stability when performing loader work, putting more power to the ground and improving traction in tough field conditions.

Increased Payload Capacity

The new 5Ms feature a 5953 lb. (2700 kg) payload capacity, which is a 23% increase over previous models. More capacity means fewer trips and getting more done in less time.

Seamless Round Baler Connectivity

5M Series tractors no longer need an adaptor harness to use your baler. With new heavy gauge wiring to support connectivity, you can now instantly plug-and-play with John Deere round balers.



Greater versatility comes standard

Get Connected Fast and Easy

A Category 2, 3-point hitch on 5M Tractors provides the lift capacity and compatibility to handle a wide range of implements. Connecting implements is convenient with telescoping draft links, adjustable sway bars, and interchangeable hitch balls in base equipment. The adjustable depth stop easily allows increased control -- stopping at the set depth whenever the position control lever is pushed forward. This gives you a consistent, level ground -- perfect for tasks such as preparing a seedbed.



Attaching a wide variety of implements is fast and simple with standard telescopic draft arms and quick adjustable sway bars. A rear fender rockshaft control switch* allows you to raise and lower the hitch from outside the cab, making it easier to hook up 3-point implements.

*Not available with mechanical hitch.





More Power, As Advertised

The 5M Series produces exceptional PTO horsepower, providing plenty of lugging ability for tough jobs. With a John Deere 5M Tractor you get all the power and torque you expect. The standard rear 540-rpm PTO speed is achieved while operating the engine at 2,100 rpm. This means that, unlike other tractors, the full advertised horsepower can be delivered to the implement in any PTO application.



No Foot Clutching

To increase transmission performance and ease of use, a de-clutch button has been integrated into the gear shift lever. This means no foot clutching is required to shift gears within a range.

540 Economy PTO Saves Fuel

Economy PTO (540E PTO) allows the operator to achieve 540 PTO rpm to power an implement at a lower tractor engine rpm. Depending on the transmission, the 540E PTO engine requirement could be as low as 1,600 rpm. Lower engine rpm translates to fuel savings and a reduction in vibration and noise level. 540E PTO is ideal for many lighter-duty applications including mowing or spraying, that do not require full engine horsepower.

Higher Hitch Capacity

Offering larger hitch cylinders in base, we've increased lift capacity more than 500 lbs. (227 kg) over previous models. A factory installed option of 70 mm. hitch cylinders increases this impressive capacity by an additional 795 lbs. (361 kg) for a max lift capacity of 5954 lbs. (2,701 kg).



All Day Comfort

Fresh air comes factory installed

With the two position rear window latch you can let in as much or as little air as you want.

Ride on the clouds

With the optional high-back heated seat (cab models only) with low frequency suspension, you'll feel like you're riding on air, perfect for cold nights and brisk mornings. And with the new suspension, you'll forget there are any bumps in the field.

Clutter-Free Cabs (not shown)

A new storage drawer under the seat gives you the perfect place to put food and drinks. Out of the way, but always accessible.

No need to wipe your boots

The new tan floor mats blend in with the color of the soil, giving you a clean looking work environment.

From fingertip controls to all-day comfort, the 5M Series is designed with comfort, convenience, and control at the forefront. The 5M Series offers different options to suit them to your preference, the application and the conditions.

LCD Instrument Cluster: Brighter Than Ever

Controlling the 5M is easy, thanks to the bright instrumentation cluster. An instrument cluster displays information in a crisp, vibrant, and useful array. This window into tractor functionality and diagnostics provides ample information. Indicators, warning lights, and gauges are clear and bright. The roll-mode function provides you with crucial onboard diagnostics. Engine hours, PTO speed, ground speed, high-low indicator, and direction of travel are all visible at the same time. There's even a light-out indicator for trailer lights, turn signals and hazard light bulbs. And when operating the PTO, there are clearly presented PTO target bars to indicate the correct engine speed.

There are daytime and nighttime modes which are based on the position of the light switch. The mode adjusts the backlight levels of the display for optimum visibility.



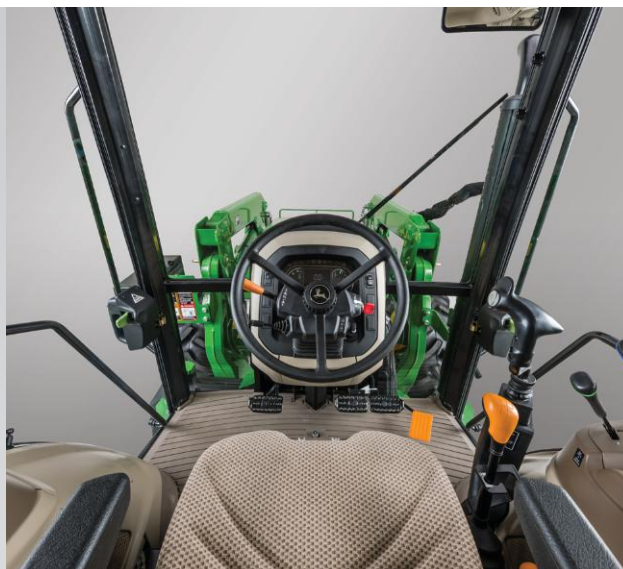
Designed for Maximum Comfort

The open operator station (OOS) on 5M Tractors gives you an incredible operating experience. Not only is the ride smooth and quiet, but you also enjoy great visibility. This makes loader work like lifting bales or scooping dirt a breeze. The bottom step of the entrance ladder is also low and extended, so it's easy to get in and out of the tractor.



5M Tractors also include the following features:

- Standard, large steel tool box that can be removed without tools to help make sure you can carry the tools needed to get the job done.
- Left- and right-hand steps provide easy and convenient access from both sides of the tractor.
- For convenience of operation, the fuel and diesel exhaust fluid (DEF) fill are both on the same side with clearly marked and color coded caps. The DEF tank has a capacity of 3.2 gal. (12.1 L), which is more than enough to sustain proper tractor operation for a full tank of diesel. A field-installed lockable fuel cap is offered for protection and peace of mind.



Clear Views Ahead

All cab models feature a cornerpost exhaust system to increase visibility without interrupting your line of sight.

Two Isolated OOS Trim Levels

The standard trim level includes the floor mat and grab handles with debris deflectors. The premium trim level includes the features of the standard, plus fender extensions with integrated work lights and upgrade to electro-hydraulic hitch.

Premium Cab for the Ultimate Operating Experience

The premium cab is designed to provide the ultimate in comfort and convenience. This cab includes all of the features of the standard cab operator station plus much more. Some of the key features include:

- Factory-installed radio
- Bluetooth ready and satellite capable
- USB port and auxiliary cord connection
- Additional heating and cooling vents
- Rear windshield wiper
- Roof window with sun shade
- Rear floor mat



Built to Load, Built to Last.

Bales, pallets, gravel or manure ... whatever material you're handling, there's a John Deere material-handling solution to match. A huge selection of front attachments, plus the design and construction quality to stand up to long days of lifting, make John Deere loaders the easy choice.

There's not much harder on the frame of a tractor than the constant lifting, lowering and rolling forces of heavy-duty loader chores. That's why we designed the 5M Series to withstand demanding, weight-intensive work – day after day, season after season. Tractor and loader frames work together to lift and distribute heavy loads. Sculpted frame members maximize tire and fender compatibility. The efficient design allows for positive, aggressive filling and fast, complete emptying. Combine a 5M Series Tractor with one of five loader options to tackle any task at hand. For applications where a level bucket is ideal, like pallet fork work, a mechanical self leveling (SL) loader can be found on a 540M or 540R loader. For applications requiring more lift capacity at max height, select from three non self leveling (NSL) options, the 540M, 540R or the H310.



The 5M Series Tractors were designed and built to handle the constant strain of loader work. Integrated loader and tractor frames, high-capacity hydraulics, and convenience features like the hydraulic single-point multi-coupler make the 5M Series the choice for heavy-duty loading and lifting.

Loader Specifications

LOADER	540M NSL*	540M SL*	540R NSL	540R SL	H310 NSL*
Compatibility	All 5M Series	All 5M Series	All 5M Series	All 5M Series	5M Tractors with MFWD
Lift capacity at maximum height**	3,674 lb. (1,670 kg)	3,058 lb. (1,390 kg)	4,246 lb. (1,926 kg)	3,395 lb. (1,540 kg)	4,644 lb. (2,073 kg)
Breakout force**	6,686 lb. (3,039kg)	5,513 lb. (2,506 kg)	4,945 lb. (2,243 kg)	5,291 lb. (2,400 kg)	6,767 lb. (3,021kg)
Maximum lift height	138 in. (3,506 mm)	138 in. (3,501 mm)	141 in. (3,595 mm)	141 in. (3,595 mm)	149 in. (3,783 mm)
Clearance with bucket dumped	97 in. (2,467 mm)	97 in. (2,462 mm)	101 in (2,564 mm)	101 in. (2,561 mm)	108 in. (2,754 mm)
Reach at max height	41 in. (1,043 mm)	41 in. (1,048 mm)	31 in. (794 mm)	31 in. (795 mm)	38 in. (959 mm)
Reach at ground level	101 in. (2,560 mm)	101 in. (2,560 mm)	94 in. (2,385 mm)	94 in. (2,386 mm)	104 in. (2,467 mm)
Digging depth	5 in. (122 mm)	5 in. (123 mm)	5.5 in. (139 mm)	4.8 in. (121 mm)	4 in. (102 mm)
Dump angle	-73 degrees	-73 degrees	-64 degrees	-64 degrees	-69 degrees
Rollback angle	44 degrees	43 degrees	47 degrees	47 degrees	44 degrees

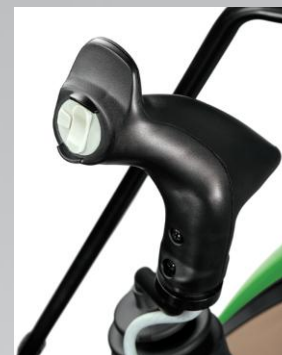
*SL is self-leveling; NSL is non self-leveling **Lift capacity and breakout force measured at pivot.

NOTE: Specifications and compatibility may vary based on tire options.

John Deere Loaders



Efficient design and solid components give you the muscle you need for fast filling and dumping, along with the reach to lift up and over high rails and into tall bins. And the loader suspension kit reduces shock and vibration typically associated with transporting heavy front loads while going over rough terrain -- giving you a smoother, more comfortable ride.



The comfortable, easy grip of the joystick gives you precise control and confidence to work in tight spaces or with sensitive loads. Third-function controls, if equipped, are under the right thumb.



The 5M Series is built to handle intense loader work. Tractor and cast iron loader frames fit together to more efficiently handle heavy-duty lifting while easing the load on the tractor itself.



You will appreciate premium features like a third function hydraulic hook up located conveniently on the torque tube, allowing for use of a bale hugger or grapple bucket.

John Deere and Frontier Equipment: The Perfect Fit

From agriculture to construction to landscaping, the 5M Series Tractors are right at home in nearly any application. But to do the job right, you need the right implement. That's where John Deere and Frontier Equipment can help. With a complete line of tools covering a wide array of jobs, Frontier Equipment is your first and last stop for front- or rear-mounted implements.

Stop by your John Deere dealer, or visit us online at BuyFrontier.com/BuyFrontier.ca to find out more about our complete line of implements from John Deere and Frontier Equipment.

Grooming mowers	Posthole diggers	Tedders
Box blades	Manure spreaders	Wood chippers
Overseeders	Wheel rakes	Snowblowers
Rotary tillers	Disc mowers	Bale spears
Disks	Rear blades	Bale huggers
Rotary rakes	Core aerators	3-Pt. Sprayers
Sickle bar mowers	Pendular spreaders	Food plot seeders
Pulverizers	Offset disks	Land planes

From scrapers to mowers, spreaders to blowers, chippers to post hole diggers ...if there's a job to do, there's an implement from Frontier Equipment that can help you do it faster and easier.



WR0010 Carted Wheel Rake



Frontier RC2084 Rotary Cutter



Frontier WC1205 Wood Chipper



Frontier DM5060 Disc Mower

Built to save you time and money

How do you use your utility tractor? If you're like most owners, you're going to use it day-in and day-out, performing all types of tasks in all kinds of weather – from feeding livestock in sub-zero conditions to making hay during hot summer days. We know you work your tractor hard. And we know you expect it to be ready to roll every day you put it to work.

That's why the 5M Series tractors are designed with built-in durability – with components and parts designed to last and last. We use steel brake lines – unlike the less expensive and fatigue-prone rubber hoses found on some other tractors. The abrasion resistant braided wire hoses used in our steering system and rear hitch are simply stronger, and longer-lasting than the conventional hoses used by some other manufacturers. That all adds up to greater durability, which means more uptime.

But high-quality, more-durable parts are just the beginning. When it comes to scheduled maintenance, the 5M is as easy as it gets. Changing the oil, grease, and fuel filters is the only routine maintenance you'll need to perform during first two years of ownership. Compare that to the routine maintenance costs of other utility tractors in this horsepower range – some that require up to 27 parts be replaced every two years. It's a fact often overlooked when you're buying a utility tractor, but the extra service and maintenance could end up costing you thousands... not to mention the potential downtime.

The 5M Series delivers one of the lowest costs of ownership of any utility tractor in its class. And we think that makes serious dollars and sense.



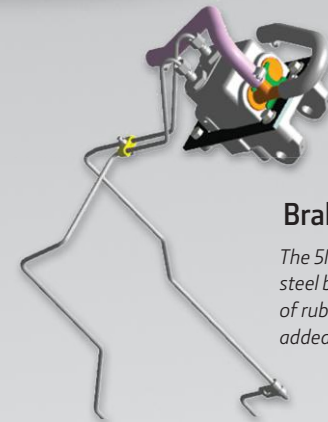
John Deere oil filter

With the 5M Series, routine maintenance, such as a simple oil change, promotes longevity of the tractor.



Braided wire hoses

Abrasion resistant braided wire hoses are stronger and last longer than the conventional hoses used by some other manufacturers.



Brake lines

The 5M Series uses steel brake lines instead of rubber hoses for added durability.

There's no protection like **PowerGard™ protection**

Protect your equipment and your investment with the John Deere PowerGard Programs.**

The PowerGard Maintenance Program allows you to purchase scheduled maintenance with your tractor. You pick the program that's right for your usage (high-hour construction applications or lower-hour equine use, for example), and your equipment will get routine inspection and service by your John Deere dealer.

The PowerGard Protection Program allows you to purchase extended engine and powertrain warranty coverage for up to an additional three years or 3,000 hours over the normal warranty period*. Enjoy the benefits of flexible coverage, low deductibles, and high peace of mind.

Ask your dealer for details, or visit us online at www.powergard.com or www.powergard.ca.

Add more Do more with John Deere attachments

Whether it's enhanced productivity, stability, visibility or hours in the field, these attachments will help you get the most out of your John Deere Tractor.



Protect your radiator, battery and other components with the optional front hood guard.



The standard tool box holds everything you need for quick adjustments in the field.



Order the optional front weight bracket for added ballast when operating heavy rear implements.



Governmental and public works customers ... stay visible with the optional rotating beacon lights.

Optional equipment available at extra cost.

*Three-year powertrain warranty covers engine emission-related parts and components as found in the Operator's Manual delivered with the Equipment. See the WARRANTY FOR NEW JOHN DEERE AGRICULTURAL EQUIPMENT AND LIMITED WARRANTY FOR NEW TURF & UTILITY EQUIPMENT or contact your dealer for details.

**PowerGard Protection Plan extended warranty covers failures due to defective materials or original workmanship of covered components. Customers have a choice between the Limited (engine & powertrain) coverage form or the Comprehensive (full-machine) coverage form. See your dealer or www.deere.ca for details.

Specifications

Models	5075M	5090M	5100M	5115M
*Rated Engine HP (ISO) 97/68/EC	73.8 (55.0 kW)	89.2 (66.5 kW)	99.1 (73.9 kW)	113.9 (84.9 kW)
PTO HP @ 2100 RPM	57.7 (43.0 kW)	75.0 (55.9 kW)	85.0 (63.4 kW)	100.0 (74.6 kW)
Configurations Available Key: Standard = * Option = ☆				
2wd	☆	☆	☆	N/A
MFWD	*	*	*	*
Standard Isolated Open Station	*	*	*	*
Premium Isolated Open Station	☆	☆	☆	☆
Standard Cab	☆	☆	☆	☆
Premium Cab	☆	☆	☆	☆
Narrow Cab	☆	☆	☆	☆
Engine				
Make	John Deere PowerTech 3029	John Deere PowerTech 4045 PWL	John Deere PowerTech 4045 PWL	John Deere PowerTech 4045 PWL
Aspiration	Turbocharged / Air-to-Air Aftercooled	Turbocharged / Air-to-Air Aftercooled	Turbocharged / Air-to-Air Aftercooled	Turbocharged / Air-to-Air Aftercooled
Cylinders	3	4	4	4
Displacement, cu. in/L	179/2.9	276/4.5	276/4.5	276/4.5
Cylinder Liners	Wet sleeved	Wet sleeved	Wet sleeved	Wet sleeved
Transmission				
Base Equipment	16F/16R PowrReverser	16F/16R PowrReverser	16F/16R PowrReverser	16F/16R PowrReverser
Optional transmissions	12F/4R SyncShuttle Plus 32F/16R PowrReverser Hi-Lo 32F/16R PowrReverser Hi-Lo with Creeper	12F/4R SyncShuttle Plus 32F/16R PowrReverser Hi-Lo 32F/16R PowrReverser Hi-Lo with Creeper	12F/4R SyncShuttle Plus 32F/16R PowrReverser Hi-Lo 32F/16R PowrReverser Hi-Lo with Creeper	12F/4R SyncShuttle Plus 32F/16R PowrReverser Hi-Lo 32F/16R PowrReverser Hi-Lo with Creeper
Fuel tank capacity, standard.				
OOS- Gallons/Liters	std: 29.6/112 - opt: 37.3/141	std: 29.6/112 - opt: 37.3/141	std: 29.6/112 - opt: 37.3/141	std: 29.6/112 - opt: 37.3/141
Cab - Gallons/Liters	std: 36.7/139 - opt: 45/170	std: 36.7/139 - opt: 45/170	std: 36.7/139 - opt: 45/170	std: 36.7/139 - opt: 45/170
PTO				
Standard	Independent 540/540E	Independent 540/540E	Independent 540/540E	Independent 540/540E
Optional	540/540E/1000	540/540E/1000	540/540E/1000	540/540E/1000
PTO Actuation	Electro-hydraulic	Electro-hydraulic	Electro-hydraulic	Electro-hydraulic
Hydraulics				
Type	Open center	Open center	Open center	Open center
Steering gpm/lpm	6.3/24	6.3/24	6.3/24	6.3/24
Implement gpm/lpm	18.4/70	18.4/70	18.4/70	18.4/70
Total gpm/lpm, Rated Output	24.7/94	24.7/94	24.7/94	24.7/94

*The engine horsepower and torque information for non-Deere engines are provided by the engine manufacturer to be used for comparison purposes only. Actual operating horsepower and torque will be less. Refer to the engine manufacturer's web site for additional information.

Specifications

Models	5075M	5090M	5100M	5115M
Traction Clutch				
	Wet	Wet	Wet	Wet
Final Drive				
Type	Inboard Planetary	Inboard Planetary	Inboard Planetary	Inboard Planetary
Differential Controls	Electro-hydraulic	Electro-hydraulic	Electro-hydraulic	Electro-hydraulic
Engage on the go rear differential lock	Yes	Yes	Yes	Yes
3 PT Hitch				
Hitch Lift Capacity - lb./kg. OECD/24 inches behind lift	std: 5,159/2,340 opt: 5,954/2,701	std: 5,159/2,340 opt: 5,954/2,701	std: 5,159/2,340 opt: 5,954/2,701	std: 5,159/2,340 opt: 5,954/2,701
Hitch Category	2, convertible to 1	2, convertible to 1	2, convertible to 1	2, convertible to 1
Draft Sensing Type	Lower-link draft sensing	Lower-link draft sensing	Lower-link draft sensing	Lower-link draft sensing
Standard Tires				
Front, 2WD (MFWD)	12.4R24 (320/85R24) R1W Radial	12.4R24 (320/85R24) R1W Radial	12.4R24 (320/85R24) R1W Radial	12.4R24 (320/85R24) R1W Radial
Rear, 2WD (MFWD)	18.4R30 (460/85R30) R1W Radial	18.4R30 (460/85R30) R1W Radial	18.4R30 (460/85R30) R1W Radial	18.4R30 (460/85R30) R1W Radial
Dimensions				
Wheelbase, 2WD & MFWD, in./mm.	92.5/2,350	92.5/2,350	92.5/2,350	92.5/2,350
Length, including draft links, in./mm.	149.5/3,798	149.5/3,798	149.5/3,798	149.5/3,798
*Height, ground to top of cab, in./mm.	102.9/2,614	102.9/2,614	102.9/2,614	102.9/2,614
*Height, ground to top of ROPS, in./mm.	102.1/2,594	102.1/2,594	102.1/2,594	102.1/2,594
Weight Approx. Ship Weight (less weights)				
2WD Standard Open Station, lb./kg.	8,140/3,700	8,140/3,700	8,140/3,700	N/A
2WD CAB, lbs/kg	8,580/3,900	8,580/3,900	8,580/3,900	N/A
MFWD Standard Open Station, lb./kg.	8,765/3,975	8,765/3,975	8,765/3,975	8,765/3,975
MFWD CAB, lb./kg.	9,185/4,175	9,185/4,175	9,185/4,175	9,185/4,175

*With standard rear tires



THE JOHN DEERE

LIVESTOCK LOYALTY PROGRAM

USD **\$1,000** / CAN **\$1,270** OFF

**If you own a qualifying hay tool,
Get \$1,000 off a tractor:**

- 5E (4-Cylinder), 5M, 5R
- 6E, 6M, 6R (105–155 HP)

OR

**If you own a qualifying tractor,
Get \$1,000 off a hay tool:**

- Round Balers
- Pull-type Small Square Baler
- Mower-Conditioners
- Round Bale Accumulators

If you've purchased any of the listed, qualifying equipment on or after November 1, 2015, you're eligible for these additional savings.

Multiply the savings: Stack this offer on top of any other current offer to save thousands!

*Offer valid from October 28, 2017 until October 26, 2018 on qualifying purchases made after November 1, 2015. If a customer purchased a new John Deere round baler, small square baler, mower conditioner or round bale accumulator after 11/1/15, they are eligible to receive USD \$1,000 (CAN \$1,270) off a new John Deere 5E 4-cylinder, 5M, 5R, 6D, 6E, 6M, or 6R Series (105 - 175 hp) Tractor. If a customer purchased a new John Deere 5E 4-cylinder, 5M, 5R, 6D, 6E, 6M, or 6R Series (105 - 175 hp) Tractor after 11/1/15, they are eligible to receive USD \$1,000 (CAN \$1,270) off a new John Deere round baler, small square baler, mower conditioner or round bale accumulator. One USD \$1,000 (CAN \$1,270) offer per customer, per eligible piece of equipment. See your dealer for complete details.



This literature has been compiled for worldwide circulation. While general information, pictures, and descriptions are provided, some illustrations and text may include finance, insurance, product options and accessories NOT AVAILABLE in all regions. PLEASE CONTACT YOUR LOCAL DEALER FOR DETAILS. John Deere reserves the right to change specification, design and price of products described in this literature without notice. John Deere, the leaping deer symbol, and John Deere's green and yellow trade dress are the trademarks of Deere & Company.

