

AIR-SEEDING EQUIPMENT

Openers, air drills, air-hoe drills, air-disk drills, commodity systems



JOHN DEERE



AIR-SEEDING EQUIPMENT

Openers, air drills, precision air-hoe drills, air-disk drills, air carts



JOHN DEERE



AIR-SEEDING EQUIPMENT
C650 AIR CART

SEED SMART. FILL FAST. FINISH

Size up the C650 Air Cart from John Deere. With a 650-bushel capacity, it fits perfectly between our 550-bushel and our 850-bushel carts, and it matches up well with more common tractor and tool sizes, including four of our drills.

You can fill all four tanks at 100 bushels/minute as quickly as 20 minutes* to help you get started quicker and finish earlier. Calibrate the tank on the cart-side display without going back to your cab to input data. ActiveCal™ makes it easy and automatic to deliver seed and fertilizer with confidence. You'll also get all the latest technology features exclusive to John Deere to help you seed smart with accuracy beyond measure.

* Based on internal John Deere testing.



EARLY.

CONTENTS

C650 Air Cart 2-3

N500C Air Drill 4-5

Features only from John Deere 6-7

Precision Ag Technology 8-9

Openers

ProSeries™ Opener10

P600 and P500 Precision Air-Hoe Drill Openers11

Air Drills

N500F Air Drills 12-13

P600 and P500 Precision Air-Hoe Drills 14-15

N500 No-Till Air Drills 16-17

H500 and H500F SFP Air-Hoe Drills 18-19

Air Carts

C650 Air Cart20-21

C850 Air Cart 22-23

1910 Air Carts 24-25

Machine Maintenance and Support..... 26-27

Parts, Attachments & Service28-29

Specifications 30-31

Dealer Service 32



Full Seed Ahead

The N500C CCS Air Drill delivers. When time's short and you've got plenty of ground to cover, give the command with full confidence. Full seed ahead.

The N500C Drill is the proven name for no-till precision technology, seed capacity and seeding more acres between refills.

Now it's a lot easier to access the meters, thanks to the new mainframe and larger redesigned tanks up to 120-bushel capacity. You can seed both small grains in fall and soybeans in spring at widths from 30 to 42 feet (9.1 to 12.8 m).

You'll see all the latest John Deere seeding technologies. Accurate in-cab adjustments. Fast, easy calibration. Greater seeding efficiency at headlands and waterways. Accurate population control around contours. Plus, precise seed placement by our ProSeries™ Openers.

New premium lighting package enhances your visibility. We've added one light in the tank to make filling and cleaning easier and attached two lights to the tank for easier maintenance, blockage checks and overall visibility.





Superseed your expectations with each pass



SectionCommand™

Take command of every acre and every input

SectionCommand is an effective, integrated, exclusive John Deere solution that reduces costly overlaps and skips that can waste seed and fertilizer, while offering more consistent fields that improve the potential of your yield.

Thanks to individual meter sections that control commodity flow, you can maintain the right application rates and row-to-row accuracy. This helps stimulate even crop emergence during the growing season and promotes consistent crop maturity at harvest. SectionCommand controls output from all meters on the cart up to eight sections.



RelativeFlow™ Blockage Software

Spot potential problems before they occur

It's not quite a sixth sense, but the sensors with our RelativeFlow Blockage Software come mighty close. Sensors on all primary towers and secondary hoses monitor the relative product flow, giving you a better view of the flow rate of both seed and fertilizer from the cart to the opener from inside your tractor cab. This exclusive technology can help you identify any problems before potential blockage occurs. RelativeFlow™ Blockage Sensors are now available on all air seeding tools.



TruSet™ Technology

Fast, easy adjustments from your cab

It's never been easier or faster to adjust your downforce on all N500, N500F, and N500C models and your fertilizer depth and trip pressure on your 76-ft. P576. Available only from John Deere, TruSet lets you complete a job that used to take several minutes in only seconds – directly from your cab. You can adapt to changing field conditions on the go. You'll promote greater seed-to-soil contact for improved germination and more consistent emergence.



Tank Scales with ActiveCal™

Calibrate from your cab in just minutes

Fact: the more frequently you calibrate your seeding equipment, the more accurate it will be. With ActiveCal, you can do all the calibration from your cab to minimize the variation in product metering. It takes only minutes, so there's no need for back-and-forth trips to the cart. ActiveCal is designed to recalibrate itself throughout your work day to give you confidence in changing product weight and weather conditions.



Wireless Controlled Hydraulic Conveyance System

Easy does it

With an easy-to-operate wireless remote, you can now control the conveyance arm movement and elevation effortlessly, helping you to cut down on depreciation to the most important resource in your operation: you. That's less physical strain on the operator, and fewer operators needed to move it. You can now fill your tanks without breaking a sweat. What's more, you can work the remote from anywhere near the cart.



AirPower 2™

More power X two

High seeding or fertilizer rates require more fan capacity than standard rates. If you need high rates in your operation, AirPower 2 delivers. With the dual fan system, you get twice the fans than the original AirPower. Plus, each fan is larger than before.

So when you need that additional power to generate a higher level of input flow, AirPower 2 has the capability to deliver what you need. And the fan housing is cast aluminum, making it lighter in weight, but more durable than ever before. You can trust your fan system will stand the test of time.

LINK UP TO THE LATEST TECHNOLOGY

JDLink™ Connection

Connect with JDLink™ for free

With JDLink¹ connectivity, machine and agronomic data automatically flows to your Operations Center account, allowing you to remotely support your operators and machines.

Location History lets you view the path traveled by a machine over a 24-hour period for up to 60 days. Monitor location, ground speed, heading and machine state information (working or idle).

John Deere Operations Center™ :

Turn your valuable information into a profitable plan of action

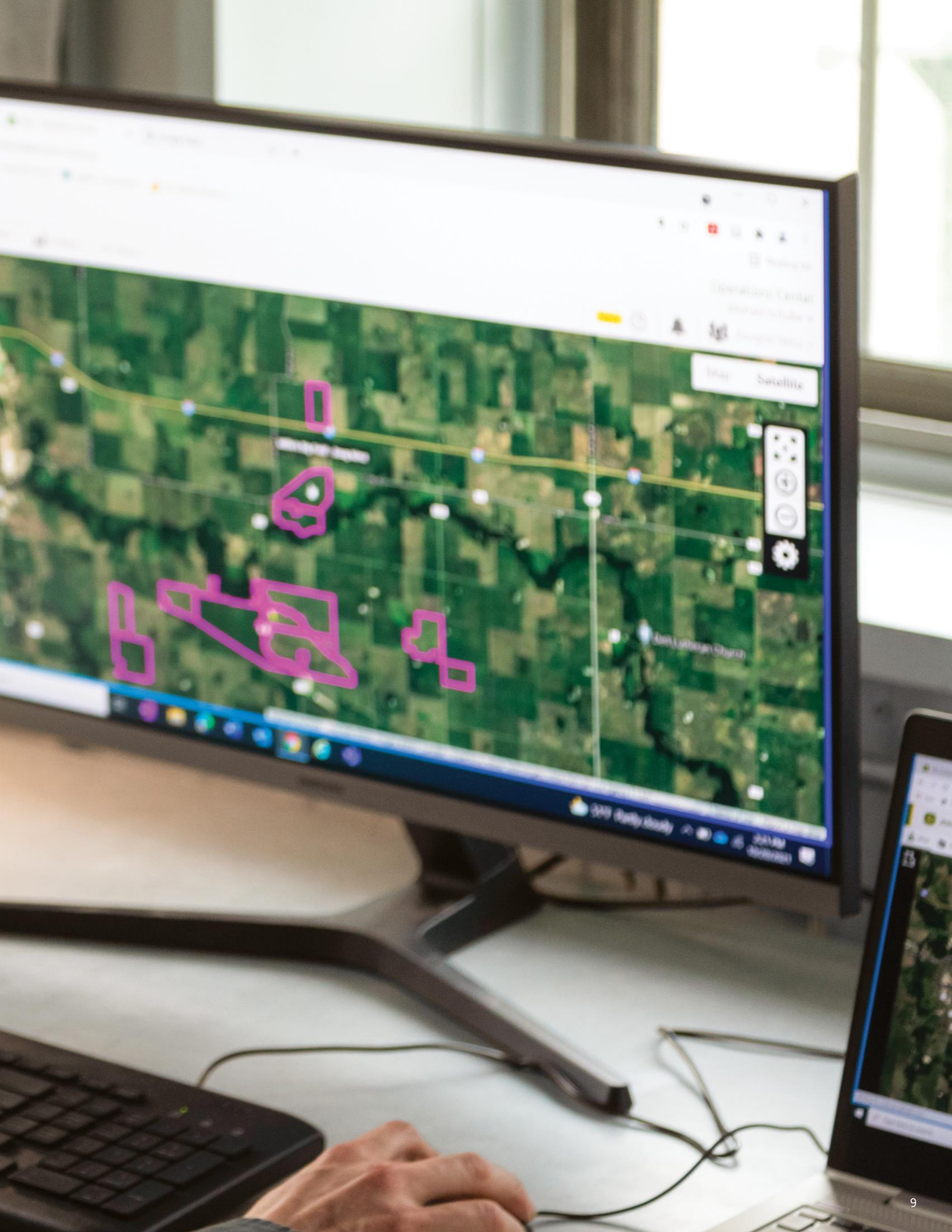
Your seeding data is only useful if you can easily access and share it away from the field. And that's where the John Deere Operations Center comes in. With it, you can turn your data into action. And with your permission, you can easily share that data with your trusted advisors.

Operations Center mobile:

Keep track of your operation anytime and from anywhere with the Operations Center mobile app. View planting data in near-real time such as seeding speed, varieties, and as-applied and planned seeding rates.



¹ Activation/subscription required. JDLink hardware comes standard with the machine. The customer can turn on the JDLink service in their Operations Center account for free. JDLink requires a cellular connection to transfer information from machine to JDLink website. Consult your John Deere Dealer for coverage availability.



OPENERS

Seed more acres without all the extra maintenance

ProSeries™ Opener

When it comes to seeding precision, consistent seed depth and uniform emergence in virtually all field conditions, you can *superseed* your expectations with ProSeries.

The narrow seed boot fits tighter to the disc which helps keep the soil in place. We've replaced the bolt with a new flag pin to keep the boot from moving. This improves accuracy and reduces wear. The redesigned seed tab fits better in the furrow and keeps the seed from bouncing out.

We've also improved the closing wheel to better close the trench to keep more anhydrous in the ground providing a boost to young plants. Ask your John Deere Dealer about ProSeries compatibility with air seeding equipment.



P600 Precision Air-Hoe Drill Opener

Uniform emergence across varying field conditions

Place seed and fertilizer where you need it with the P600 Precision Air-Hoe Drill Opener. The standard residue deflector and double knife design creates a clean black strip at seeding. This provides uniform seed and fertilizer placement with a consistent spread of 0.75-in. vertically and 1.5-in. horizontally – ensuring both seed safety and quick access to nutrients to improve germination and overall crop potential.

P500 Precision Air-Hoe Drill Opener

Refined depth control for uniform emergence

The P500 Precision Air-Hoe Drill Opener provides excellent depth control in paired-row and single-row settings. Hydraulics keep the openers engaged, even in rocky and rolling or uneven field conditions.



FEED THE CROP, NOT THE WEEDS

Easily place fertilizer at a consistent spread with both the P500 and P600 openers. Quick access to nutrients help feed germination resulting in a more uniform stand and overall crop potential.



N500F AIR DRILLS

Plant and fertilize up to 60-feet wide



N500F Air Drills

To win big in small grains, it takes a seeding solution that superseeds your expectations. The 60-foot N500F Air Drill is a full 40% wider than our prior models to help you seed an extra 100 acres in a 10-hour day. In other words, you can seed a quarter-section with nine fewer passes. Choose from four widths in all ranging from 30-foot (9.1 m) up to 60 foot (18.3 m).

You'll superseed your expectations with accurate seed placement, too. Get better flotation and reduced soil compaction from the larger mainframe and wing tires for more uniform seed depth and seed-to-soil contact. And when fields are hilly, the frame sections flex to follow the contour of the ground.

The N500F Air Drill includes a fertilizer attachment to save you the time, labor, fuel and cost of a separate fertilizer pass.



Seed smart. Seed precisely.

P600 Precision Air-Hoe Drills

Maximize your crop potential across all soil types and field conditions with our new lineup of P600 Precision Air Hoe Drills. RelativeFlow™ blockage monitoring offers consistent row to row seeding rates, while the improved tire options will provide you with better flotation through the field. Ranging from 60- to 90-ft widths at 10- or 12-in. spacing¹, the dual knife openers provide uniform seed and fertilizer placement with a consistent spread of 0.75-in. vertically and 1.5-in. horizontally.



¹ Models and widths may not be available at the time of publication. Please see your John Deere dealer for details.

P500 Precision Air-Hoe Drills

The P500 Precision Air-Hoe Drill features an exclusive opener for hydraulic precision depth control that senses and adapts to changing terrain and field conditions. Fertilizer shanks and seed boots maintain consistent depth for accurate seed and fertilizer placement row after row, pass after pass, acre after acre. The result is uniform emergence across the field with opportunities for higher yields.

Applying fertilizer while seeding? The P500 uses two independent hydraulic accumulators that let you set packing pressure and fertilizer trip force individually. This design eliminates the need for continuous flow from the tractor, reducing heat build-up in the hydraulic oil and the potential for lost horsepower, all while assuring uncompromised depth control and consistent seed and fertilizer spacing. You can even feather the press-wheel down pressure as needed to match changing field conditions.



N500 NO-TILL AIR DRILLS

Gets you in the field sooner





N500 No-Till Air Drills

The N500 No-Till Air Drill is an efficient no-till seeding tool featuring our ProSeries™ opener made to be a workhorse in tough no-till conditions. Available in 30-, 36-, 40-, 42-, 50- and 60-ft widths to help you get more done.

Whether you prefer the productive 42-ft N542 or need the increased width of the 60-ft N560, all N500 Drills are designed for heavy residue, but don't think that's the only use. Two inches of float in the opener system lets openers follow ground contours without extra down-pressure. When combined with the exclusive active hydraulic down-pressure, you'll get accurate depth control and all-till capability.

Great stands start with uniform depth control

H500 and H500F SFP Air-Hoe Drills

The H500 and H500F Separate Fertilizer Placement (SFP) Air-Hoe Drill helps you get the most out of your seed, fertilizer and machinery investments. Choose from 41-, 50- and 61-ft. widths to fit your operation.

Acre after acre, year after year, you need a seeding solution that stands up to tough field conditions, while maintaining consistent seed depth in a variety of soils and residue levels. The H500 and H500F SFP have been built with enhanced durability, longevity and your profitability in mind. And now, they feature RelativeFlow™ blockage software to help you spot potential problems before they occur.

When compared to earlier air hoe drill designs, the H500 and H500F SFP provide a much more robust design. A rigorous field testing program has proven the durability enough that John Deere is proud to offer a full, 3-year frame warranty* on each new H500 and H500F SFP Air Hoe Drill.

**See Dealer for details.*





C650 AIR CART

Size up accuracy beyond measure

C650 Air Cart

With a 650-bushel capacity, the C650 Air Cart matches up well with more common tractor and tool sizes, including all of our drills. You'll seed smart. Fill fast. Finish early.

You can fill all four tanks at 100 bushels/minute as quickly as 20 minutes* to stretch your productivity.

With a handy cart-side display, you'll get easier access to cart features such as viewing scale data and commodity levels, for example – all without running back to the cab. You'll also see all the latest technology features exclusive to John Deere that seamlessly work together for easy, smart and precise operation.

* Based on internal John Deere testing.





C850 AIR CART

Large-scale performance for small grain seeding

C850 Air Cart

With a large 850-bushel capacity, the C850 Air Cart offers the most favorable balance between cart, tractor, tool size and precision ag technology. The ideal configuration of less weight, less horsepower needed, reduced compaction and better emergence.

With the C850 Air Cart, you can cover 170 acres per fill and easily seed an entire quarter section. Its accuracy is the very measure of performance. That begins with our AirPower™ 2 system that uses two separate, high-capacity fans – one for seed, one for fertilizer. The results: Greater consistency across the entire drill, more uniform seed emergence, more even flowering and canopy development, and greater yields.





1910 AIR CARTS

Precise. Productive. Smart.





1910 Air Carts

Apply bulk seed or fertilizer with the precision you expect from John Deere. The 1910 Air Cart delivers. With 10 different configurations and several widths to choose from, it's easy to match the 1910 to your seeding tool and tractor horsepower. Use the smaller size for operations requiring more than a central fill seeding or dry application system while a larger size can seed more acres per day with fewer stops to refill. Variable rate and hydraulic calibration are standard equipment, allowing for consistent drive power to the meters at all meter speeds. These features let you change rates with faster responsiveness.

Tow-between models eliminate tracking over the finished seedbed and offer better weight transfer and more stability on slopes and hillsides.

Tow-behind models present a better view of the seeding tool to let you keep a close eye on the seeding tool operating.

CONNECTED TO WHAT COUNTS.



CONNECTED SUPPORT

With the JDLink¹ hardware, you can activate the JDLink service for free from your Operations Center account. Once activated, your John Deere Dealer offers the connection needed to keep you running when it's crunch time. With your approval, JDLink provides the bridge to proactive and predictive alerts that identify issues before they arise. From there, the dealer can remotely assess the problem saving you time and money.

Service ADVISOR™ Remote

Allows your dealer to remotely analyze Diagnostic Trouble Codes in near-real-time so technicians arrive on-site with the right parts and the right tools to quickly repair your equipment.

Expert Alerts

With your permission, Expert Alerts can proactively notify your dealer of potential machine issues. Using Service ADVISOR Remote, this helps technicians remotely diagnose your machine and fix many issues before they ever become a problem.

Remote Display Access

Allows your dealer to use Service ADVISOR Remote from anywhere to quickly assist you with in-cab display setup and adjustments for optimal performance - eliminating the need for an on-site service call.

Learn more at JohnDeere.com/ConnectedSupport or JohnDeere.ca/ConnectedSupport.

¹ Activation/subscription required. JDLink hardware comes standard with the machine. The customer can turn on the JDLink service in their Operations Center account for free. JDLink requires a cellular connection to transfer information from machine to JDLink website. Consult your John Deere Dealer for coverage availability.



FIND WHAT YOU NEED AT THE ONE PARTS COUNTER

Your John Deere dealer makes sure to put the right people behind the parts counter. People who know the ins and outs of your air seeder and have a clear understanding of your unique needs. Knowledgeable and trained, they can guide you to the right part, attachment or service (if needed) to fit your budget. Stop by the one parts counter today.

* 12 month/unlimited hour warranty on new OEM agricultural parts installed by an authorized John Deere Dealer. 6 month/unlimited hour warranty for all new John Deere agricultural and turf equipment parts. See John Deere Service Parts Warranty US & Canada and participating dealers for more details.

** Financing on approved John Deere Financial credit only. Contact your Multi-Use Account merchant or dealer for complete details.

THE JOHN DEERE DIFFERENCE

- Right Part for Any Budget
- Highly Trained Expert Technicians
- 12 Months Parts & Labor Warranty*
- Short & Long Term Financing Options**



ProSeries™ Opener Performance Upgrade

Gain agronomic advantages and extended wear life for your 90-Series opener with a ProSeries Opener performance upgrade. Offers five state-of-the-art parts: seed boot, press wheel, serrated closing wheel, seed tab and closing spring. Opener disc also included.



SPF Opener Performance Upgrade

Newly designed sealing plates and scrapers improve the NH3 sealing capabilities of the separate fertilizer placement opener for 90-Series. Performance upgrade bundle includes scraper, sealing plate, disk opener and hardware.



Heavy-Duty Bearings

Better protect your gauge and closing wheels from dirt and debris with new, heavy-duty bearings exclusive to John Deere. Excellent for tough seeding conditions and high speeds.



Packer Wheel

A newer and wider version of a packer wheel is now available for improved seed-to-soil content to enhance emergence.



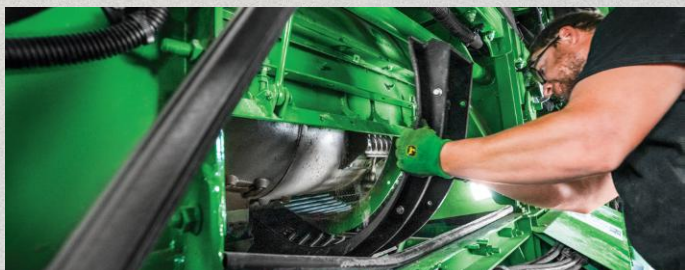
Spoke Gauge Wheels

An ideal solution for seeding in wet soil conditions, spoke gauge wheels allow mud and debris to flow through the wheel for superior depth performance. Choose from narrow and conservation options.



A&I Stainless Steel

From manifolds and meter housings to run kits and tubes, A&I now offers durable, stainless-steel parts for John Deere 1900 and 1910 air carts.



Service

You can count on the best-trained technicians in the industry to keep you up and running. They'll be ready whenever you need them.

SPECIFICATIONS

N500 No-Till Air Drill		
MACHINE CONFIGURATIONS	75-in. (19.05-cm) Spacing	10-in. (25.40-cm) Spacing
N530 (30-ft.; 9.14-m)	48	36
N536 (36-ft.; 10.97-m)	58	44
N540 (40-ft.; 12.19-m)	64	48
N542 (42-ft.; 12.80-m)	68	50
N550 (50-ft.; 15.24-m)	80	60
N560 (60-ft.; 18.29-m)	96	72

P600 Air-Hoe Drill				
MACHINE CONFIGURATIONS	P660 60-ft. (18.28-m) 5-section models	P670 70-ft. (21.33-m) 5-section models	P680 80-ft. (24.38-m) 5-section models	P690 90-ft. (27.43-m) 5-section models
Openers system	Independent dual knife design with separate fertilizer placement.			
Standard Features	Carbide tipped knives, maintenance free pivot point and standard residue deflector.			
Number of Openers	60-72	70-84	80	90
Row Spacing	10" or 12"	10" or 12"	12"	12"
Number of Ranks	3	3	3	3
Space between Ranks	50"	50"	50"	50"

P500 Air-Hoe Drill			
MACHINE CONFIGURATIONS	P540 40-ft. (12.19-m) 3-section models	P556 56-ft. (17.06-m) 5-section models	P576 76-ft. (23.16-m) 5-section models
Openers system	Independent but linked fertilizer shank and seed opener		
Standard Features	Carbide on fertilizer knife and seed opener		
Number of Openers	40	56	76
Row Spacing	12-in. (30.48-cm) (Optional Paired Row)		5.5x5-in. (140x13-mm)
Number of Ranks	3	3	5.5x5-in. (140x13-mm)
Space between Ranks	Minimum of 50-in. (127.00-cm)		56-in. (142.24-cm)

N500F SFP Air Drill					
MACHINE CONFIGURATIONS	N530F 30-ft. (9.14-m)	N536F 36-ft. (10.97-m)	N540F 40-ft. (12.19-m)	N543F 43-ft. (13.10-m)	N560F 60-ft. (18.28-m)
Seed Spacing	10-in. (25.40-cm)	10-in. (25.40-cm)	10-in. (25.40-cm)	10-in. (25.40-cm)	10-in. (25.40-cm)
Fertilizer Spacing	20-in. (50.80-cm)	20-in. (50.80-cm)	20-in. (50.80-cm)	20-in. (50.80-cm)	20-in. (50.80-cm)
Seed openers	36	44	48	52	72
Fertilizer openers	18	22	24	26	36

N500C Air Drill CCS™				
MACHINE CONFIGURATIONS	N530C 30-ft. (9.14-m)	N536C 36-ft. (10.97-m)	N540C 40-ft. (12.19-m)	N542C 42-ft. (13-m)
Dual Rank Number of Openers				
75-in. (19.05-cm) Spacing	48	58	64	68
10-in. (25.40-cm) Spacing	36	44	48	50
Single Rank Number of Openers				
15-in. (38.10-cm) Spacing	24	28	32	34

H500 and H500F Air-Hoe Drills		H500 Air-Hoe Drill		H500F Air-Hoe Drill	
MACHINE CONFIGURATIONS	Width	Row Spacing	Width	Row Spacing	
3-section models	H541 (41-ft.; 12.49-m)	75, 10, 12.5-in. (19.05, 25.40, 31.75-cm)	H540F (40-ft.; 12.19-m)	10-in. (25.40-cm)	
5-section models	H550 (50-ft.; 15.24-m)	75, 10, 12.5-in. (19.05, 25.40, 31.75-cm)	H550F (50-ft.; 15.24-m)	10-in. (25.40-cm)	
	H561 (61-ft.; 18.59-m)	75, 10, 12.5-in. (19.05, 25.40, 31.75-cm)	H560F (60-ft.; 18.29-m)	10-in. (25.40-cm)	

730 LL Air-Disk Drill			
MACHINE CONFIGURATIONS	28-ft. (8.53-m)	36-ft. (10.97-m)	44-ft. (13.4-m)
Mainframe Dimensions			
Type	3-Section, 5-Bar Design with Over-Center Fold		
Cross Members	3x4-in. (75x102-mm)		
End Tubes	2x5-in. (54x127-mm)		
Hitch	6x10-in. (152x254-mm) Tubular level lift		
Rockshaft	5.5x3.75-in. (140x10-mm)		5.5x5-in. (140x13-mm)
Center Frame Width	11-ft. 9-in. (3.58-m)	11-ft. 9-in. (3.58-m)	14-ft. 9-in. (4.50-m)

40 and 50 ft models also available in AUS/NZ only



Air Carts	C650 Air Cart Tow-Between	C650 Air Cart Tow-Behind	C850 Air Cart
TANKS	Four tanks		Four tanks
Capacity Total	650 bu (22,905 L)		850-bu. (29,953-L)
Capacity per tank	Tank 1: 50-bu. (1,761-L), Tank 2: 260-bu. (9,162-L), Tank 3: 130-bu. (4,581-L), Tank 4: 210-bu. (7,400-L)		Tank 1: 50-bu. (1,761-L), Tank 2: 260-bu. (9,162-L), Tank 3: 130-bu. (4,581-L), Tank 4: 410-bu. (14,448-L)
TOWING CONFIGURATION			
	Tow-between	Tow-behind	Tow-behind only
DIMENSIONS			
Length	39 ft. 5 in. (12.0-m)	38 ft. 11 in. (11.86-m)	48-ft. 0-in. (14.60-m)
Width	21 ft. 8 in. (6.62-m)	20 ft. 2 in. (6.16-m)	21-ft. 8-in. (6.62-m)
Height (field)	16-ft. 3-in. (4.94-m)		16-ft. 3-in. (4.94-m)
Height (transport)	13-ft. 4-in. (4.05-m)		13-ft. 3-in. (4.03-m)
WEIGHT			
Weight (Empty)	32,920 lbs. (14,932-kg)	36,583 lbs. (16,594-kg)	40,900-lb. (18,552-kg)
CONVEYANCE			
Rate	100-bu./minute (3,523-L/minute)		100-bu./minute (3,523-L/minute)
Tube size	12 in. (30.5 cm)		12 in. (30.5 cm)
Belt size	19 in. (48.2 cm)		16 in. (40.7 cm)
Low profile hopper	72 in. X 30 in. X 9-in. (183 cm X 76.2 cm X 23-cm)		72 in. X 30 in. X 9-in. (183 cm X 76.2 cm X 23-cm)
AIR SYSTEM	Dual Fans		Dual Fans
System type	B-type		B-type
Fan Drive	Hydraulic		Hydraulic
Blower (diameter)	275-in. (69.85-cm)		275-in. (69.85-cm)
Primary air hose	Stainless-steel 3-in. (7.62-cm)		Stainless-steel 3-in. (7.62-cm)
Maximum rate	550 lb. of seed per acre at 5.5 mph and 15 degree slope (300 lb. fertilizer and 250 lb. seed)		550 lb. of seed per acre at 5.5 mph and 15 degree slope (300 lb. fertilizer and 250 lb. seed)
METERING			
Number	Five meter cartridges; 30 approved crops		Five meter cartridges; 30 approved crops
Meter Drive	Hydraulic		Hydraulic

1910 Air Cart			
Capacity	Tow-Between		Tow-Behind
Two Tanks	270-bu. (9,531-L)		270-bu. (9,531-L)
	350-bu. (12,355-L)		350-bu. (12,355-L)
Three Tanks	250-bu. (8,826-L)		
			340-bu. (12,002-L)
End Tubes	430-bu. (15,179-L)		430-bu. (15,179-L)
Dimensions (Tow-Between)	Height	Length	Width
250-bu. (8,810-L)	12 ft. 5 in. (3.78m)	30 ft. 4 in. (9.25m)	13 ft. 8 in. (4.17m)
270-bu. (9,515-L)	12 ft. 9 in. (3.9m)	29 ft. 2 in. (8.9m)	14 ft. 2 in. (4.32m)
350-bu. (12,334-L)	13 ft. 6 in. (4.11m)	30 ft. 6 in. (9.32m)	14 ft. 3 in. (4.34m)
430-bu. (15,152-L)	13 ft. 6 in. (4.11m)	32 ft. 5 in. (9.88m)	14 ft. 3 in. (4.34m)
Dimensions (Tow-Behind)	Height	Length	Width
250-bu. (8,810-L)	12-ft. 5-in. (3.78-m)	27-ft. 1-in. (8.25-m)	13-ft. 8-in. (4.17-m)
270-bu. (9,515-L)	12-ft. 9-in. (3.88-m)	25-ft. 7-in. (7.80-m)	14-ft. 2-in. (4.32-m)
340-bu. (11,981-L)	12-ft. 9-in. (3.88-m)	27-ft. 5-in. (8.35-m)	14-ft. 2-in. (4.32-m)
350-bu. (12,334-L)	13-ft. 6-in. (4.11-m)	25-ft. 11-in. (7.90-m)	14-ft. 3-in. (4.34-m)
430-bu. (15,152-L)	13-ft. 6-in. (4.11-m)	27-ft. 9-in. (8.45-m)	14-ft. 3-in. (4.34-m)
550-bu. (19,381-L)	13-ft. 6-in. (4.11-m)	28-ft. 9-in. (8.76-m)	14-ft. 3-in. (4.34-m)





Supported by one of the most responsive dealer networks in the business

Nobody cares more about keeping your equipment in solid working order than your John Deere dealer. With a complete inventory of genuine John Deere parts, highly trained service technicians, and a thorough understanding of your business, your John Deere dealer knows how to keep you and your equipment up and running.

A strong name in equipment, and a strong dealership network: get it all with John Deere.

This literature has been compiled for worldwide circulation. While general information, pictures and descriptions are provided, some illustrations and text may include finance, credit, insurance, product options and accessories NOT AVAILABLE in all regions. PLEASE CONTACT YOUR LOCAL DEALER FOR DETAILS. John Deere reserves the right to change specification and design of all products described in this literature without notice. Copyright 2022 Deere & Company.



JOHN DEERE

AIR-SEEDING EQUIPMENT
NEW C650 AIR CART

SEED SMART. FILL FAST. FINISH

Size up the C650 Air Cart, new from John Deere. With a 650-bushel capacity, it fits perfectly between our 550-bushel and our 850-bushel carts, and it matches up well with more common tractor and tool sizes, including four of our drills.

You can fill all four tanks at 100 bushels/minute as quickly as 20 minutes* to help you get started quicker and finish earlier. Calibrate the tank on the cart-side display without going back to your cab to input data. ActiveCal™ makes it easy and automatic to deliver seed and fertilizer with confidence. You'll also get all the latest technology features exclusive to John Deere to help you seed smart with accuracy beyond measure.

* Fill time compared to 1910 550 TBH based on Internal John Deere testing.





EARLY.

CONTENTS

New C650 Air Cart 2-3

N500C Air Drill 4-5

Features only from John Deere ...6-7

Precision Ag Technology 8-9

Openers

ProSeries™ Opener 10

New P500 Air-Hoe Drill Openers... 11

Air Drills

N500F Air Drills12-13

P500 Air-Hoe Drills 14-15

N500 No-Till Air Drills 16-17

H500 and H500F

SFP Air-Hoe Drills18-19

Air Carts

C650 Air Cart 20-21

C850 Air Cart 22-23

1910 Commodity Air Carts24-25

Specifications26-27

Dealer Service28

Full Seed Ahead

The N500C CCS Air Drill delivers. When time's short and you've got plenty of ground to cover, give the command with full confidence. Full seed ahead.

Formerly the 1990 CCS Air Drill, the N500C Drill is the proven name for no-till precision technology, seed capacity and seeding more acres between refills.

Now it's a lot easier to access the meters, thanks to the new mainframe and larger redesigned tanks up 120-bushel capacity. You can seed both small grains in fall and soybeans in spring at widths from 30 to 42 feet (9.1 to 12.8 m).

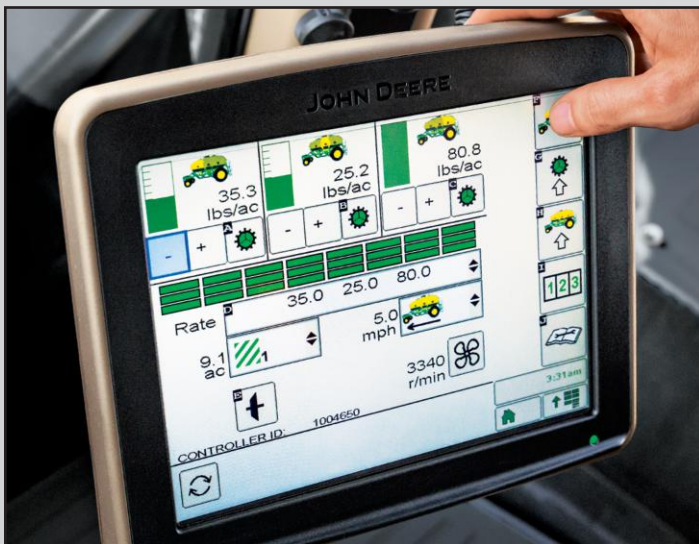
You'll see all the latest John Deere seeding technologies. Accurate in-cab adjustments. Fast, easy calibration. Greater seeding efficiency at headlands and waterways. Accurate population control around contours. Plus, precise seed placement by our ProSeries™ Openers.

New premium lighting package enhances your visibility. We've added one light in the tank to make filling and cleaning easier and attached two lights to the tank for easier maintenance, blockage checks and overall visibility.





Superseed your expectations with each pass



SectionCommand

Take command of every acre and every input

SectionCommand is an effective, integrated, exclusive John Deere solution that reduces costly overlaps and skips that can waste seed and fertilizer, while offering more consistent fields that improve the potential of your yield.

Thanks to individual meter sections that control commodity flow, you can maintain the right application rates and row-to-row accuracy. This helps stimulate even crop emergence during the growing season and promotes consistent crop maturity at harvest. SectionCommand controls output from all meters on the cart up to eight sections.



RelativeFlow Blockage Software

Spot potential problems before they occur

It's not quite a sixth sense, but the sensors with our RelativeFlow Blockage Software come mighty close. Sensors on all primary towers and secondary hoses monitor the relative product flow, giving you a better view of the flow rate of both seed and fertilizer from the cart to the opener from inside your tractor cab. This exclusive technology can help you identify any problems before potential blockage occurs. RelativeFlow™ Blockage Sensors are now available on all air seeding tools.



TruSet™ Technology

Fast, easy adjustments from your cab

It's never been easier or faster to adjust your downforce on all N500, N500F, and N500C models and your fertilizer depth and trip pressure on your 76-ft. P576. Available only from John Deere, TruSet lets you complete a job that used to take several minutes in only seconds – directly from your cab. You can adapt to changing field conditions on the go. You'll promote greater seed-to-soil contact for improved germination and more consistent emergence.



Tank Scales with ActiveCal™

Calibrate from your cab in just minutes

Fact: the more frequently you calibrate your seeding equipment, the more accurate it will be. With ActiveCal, you can do all the calibration from your cab to minimize the variation in product metering. It takes only minutes, so there's no need for back-and-forth trips to the cart. ActiveCal is designed to recalibrate itself throughout your work day to give you confidence in changing product weight and weather conditions.



Wireless Hydraulically-Controlled Conveyance

Easy does it

With an easy-to-operate wireless remote, you can now control the conveyance arm movement and elevation effortlessly, helping you to cut down on depreciation to the most important resource in your operation: you. That's less physical strain on the operator, and fewer operators needed to move it. You can now fill your tanks without breaking a sweat. What's more, you can work the remote from anywhere near the cart.



AirPower 2™

More power X two

High seeding or fertilizer rates require more fan capacity than standard rates. If you need high rates in your operation, AirPower 2 delivers. With the dual fan system, you get twice the fans than the original AirPower. Plus, each fan is larger than before.

So when you need that additional power to generate a higher level of input flow, AirPower 2 has the capability to deliver what you need. And the fan housing is cast aluminum, making it lighter in weight, but more durable than ever before. You can trust your fan system will stand the test of time.

Precision ag: bigger savings and better seeding

John Deere Operations Center:

turn your valuable information into a profitable plan of action

Your ticket to bigger profit potential starts here. With John Deere Operations Center, you can collect data easily, review it to make accurate decisions and share with your trusted advisors. Within this online portal, you can see average yield, total yield, average moisture, as-applied and planned seeding rates, seeding speed and of course varieties. Every time you're done seeding a field, that information is waiting for you in the Operations Center to make adjustments and improvements for the next year. Lay the maps side-by-side onscreen to evaluate yield impact, for instance — then send seeding prescriptions wirelessly to the field on the go.

My Operations™ Mobile App allows you to monitor and direct many farm activities by combining current machine and operational information into a mobile-focused experience. This app empowers managers to connect to in-cab displays, evaluate performance during and after field work, and effectively manage field logistics.

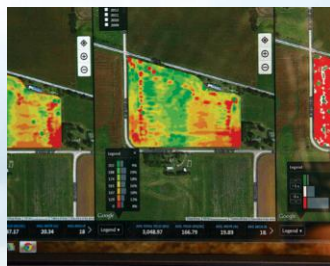
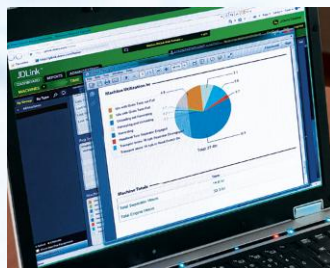


JD Link™ Connect: an easy, reliable connection to your machine

JDLink Connect features a controller that uses cellular communication. Machine and production data are collected by the controller and wirelessly transferred to a server, so you can use an online portal to manage your operation without being in your cab. First year is complimentary.

Send setup files wirelessly to the machine from the Operations Center. Modify existing ones and send to your machine via Wireless Data Transfer.

Location History lets you view the path traveled by a machine over a 24-hour period for up to 60 days. Monitor location, ground speed, heading and machine state information (working or idle).



John Deere Connected Support™: five years of machine connectivity

Monitor machine fuel levels, location history, receive alerts and even view your in-cab display remotely. Your dealer can also monitor alerts as well as diagnose problems or update software remotely to get you back up and running. And if you do need a service call, this ensures the dealer can bring the right tools and parts to the field.

This includes **Remote Display Access** that lets you and your trusted advisors to remotely view your screen to resolve issues or make changes during seeding without making a trip to the field. Your dealer can read diagnostic trouble codes remotely as well as recording performance readings.



ProSeries™ OPENER

Seed more acres without all
the extra maintenance



ProSeries™ Opener

ProSeries Opener is our latest, most advanced opener for your seed and separate fertilizer placement. When it comes to seeding precision, consistent seed depth and uniform emergence in virtually all field conditions, you can *superseed* your expectations with ProSeries.

The narrow seed boot fits tighter to the disc which helps keep the soil in place. We've replaced the bolt with a new flag pin to keep the boot from moving. This improves accuracy and reduces wear. The redesigned seed tab fits better in the furrow and keeps the seed from bouncing out.

We've also improved the closing wheel to better close the trench to keep more anhydrous in the ground providing a boost to young plants.

As a final enhancement, we've added Quick-Change Blades to make blade changing easier and faster – up to 45 percent faster than ProSeries Openers according to John Deere internal tests. These are standard on all no-till and Separate Fertilizer Place (SFP) models, saving you time and money before, during and after the seeding season.

Ask your John Deere Dealer about ProSeries compatibility with air seeding equipment.

New P500 Air-Hoe Drill Opener

Refined depth control for uniform emergence

Formerly the 1870 Drill Opener, the P500 Drill Opener provides excellent depth control in paired-row and single-row settings. Hydraulics keep the openers engaged, even in rocky and rolling or uneven field conditions. And since the press wheel is on a separate hydraulically charged accumulator, it will immediately bring the seedboot back into place after being tripped. This leads to less frame abuse and reduced horsepower requirements.

The P500 helps you achieve accurate and consistent seed placement with less horsepower, less soil disturbance and more moisture retention — all for a quicker, more even emergence, plus the potential for bigger yields at harvest.



Feed the crop, not the weeds. Easily place fertilizer in dry, liquid or gas forms from 2 to 6 inches deep. Independent opener downforce can be set from 200 to 500 pounds with a trip clearance of 12 inches. The standard dry knife (shown)

features carbide tiles on the face and shank for longer wear life; it works with the dry tip and dry tubes. Also available are a variety of knives, tips and tubes made for use with specific forms of fertilizer.

N500F AIR DRILLS

Plant and fertilize up to 60-feet wide



N500F Air Drills

To win big in small grains, it takes a seeding solution that superseeds your expectations. The 60-foot N500F Air Drill is a full 40% wider than our prior models to help you seed an extra 100 acres in a 10-hour day. In other words, you can seed a quarter-section with nine fewer passes. Choose from four widths in all ranging from 30-foot (9.1 m) up to 60 foot (18.3 m).

You'll superseed your expectations with accurate seed placement, too. Get better flotation and reduced soil compaction from the larger mainframe and wing tires for more uniform seed depth and seed-to-soil contact. And when fields are hilly, the frame sections flex to follow the contour of the ground.

The N500F Air Drill includes a fertilizer attachment to save you the time, labor, fuel and cost of a separate fertilizer pass.



Productivity and precision beyond measure

76-feet P500 Air-Hoe Drills

Formerly the 1870, the P500 Air-Hoe Drill delivers a difference you can see right away. With its 76-foot frame, the P500 Air-Hoe Drill is 36% wider compared to the 56-foot P500 – a significant upgrade in productivity. And while your in-field performance is heightened, retractable openers allow for some of the narrowest transport dimensions on the market. This makes field-to-field travel and serviceability a lot easier. If you need a smaller size, we have that, too with our P540 (40-feet) model.

It's far more than productive working widths, though. It's also something that can't be measured in feet and inches. It's the agronomics. With exclusive features such as TruSet™ technology

and RelativeFlow™ blockage software, the P500 Drill delivers the next-generation performance you need to help you reach the full potential of each seed.

Simply trying to measure the value of the P500 Drill by its size alone doesn't do it justice. The true value of this drill, frankly, is beyond measure.



Seed smart. Seed precisely.

The P500 Air-Hoe Drill features an exclusive opener for hydraulic precision depth control that senses and adapts to changing terrain and field conditions. Fertilizer shanks and seed boots maintain consistent depth for accurate seed and fertilizer placement row after row, pass after pass, acre after acre. The result is uniform emergence across the field with opportunities for higher yields.

Applying fertilizer while seeding? The P500 uses two independent hydraulic accumulators that let you set packing pressure and fertilizer trip force individually. This design eliminates the need for continuous flow from the tractor, reducing heat build-up in the hydraulic oil and the potential for lost horsepower, all while assuring uncompromised depth control and consistent seed and fertilizer spacing. You can even feather the press-wheel down pressure as needed to match changing field conditions.



N500 NO-TILL AIR DRILLS

Gets you in the field sooner





N500 No-Till Air Drills

The N500 No-Till Air Drill is an efficient no-till seeding tool featuring our ProSeries™ opener made to be a workhorse in tough no-till conditions. Available in 30-, 36-, 40-, 42-, 50- and 60-ft widths to help you get more done.

Whether you prefer the productive 42-ft N542 or need the increased width of the 60-ft N560, all N500 Drills are designed for heavy residue, but don't think that's the only use. Two inches of float in the opener system lets openers follow ground contours without extra down-pressure. When combined with the exclusive active hydraulic down-pressure, you'll get accurate depth control and all-till capability.

Great stands start with uniform depth control

H500 and H500F SFP Air-Hoe Drills

The H500 and H500F Separate Fertilizer Placement (SFP) Air-Hoe Drill helps you get the most out of your seed, fertilizer and machinery investments. Choose from 41-, 50- and 61-ft. widths to fit your operation.

Acre after acre, year after year, you need a seeding solution that stands up to tough field conditions, while maintaining consistent seed depth in a variety of soils and residue levels. The H500 and H500F SFP have been built with enhanced durability, longevity and your profitability in mind. And now, they feature RelativeFlow™ blockage software to help you spot potential problems before they occur.

When compared to earlier air hoe drill designs, the H500 and H500F SFP provide a much more robust design. A rigorous field testing program has proven the durability enough that John Deere is proud to offer a full, 3-year frame warranty* on each new H500 and H500F SFP Air Hoe Drill.

**See Dealer for details.*





C650 AIR CART

Size up accuracy beyond measure

New C650 Air Cart

With a 650-bushel capacity, the new C650 Air Cart matches up well with more common tractor and tool sizes, including all of our drills. You'll seed smart. Fill fast. Finish early.

You can fill all four tanks at 100 bushels/minute as quickly as 20 minutes* to stretch your productivity.

With a handy cart-side display, you'll get easier access to cart features such as viewing scale data and commodity levels, for example – all without running back to the cab. You'll also see all the latest technology features exclusive to John Deere that seamlessly work together for easy, smart and precise operation.





C850 AIR CART

Large-scale performance for small grain seeding

C850 Air Cart

With a large 850-bushel capacity, the C850 Air Cart offers the most favorable balance between cart, tractor, tool size and precision ag technology. The ideal configuration of less weight, less horsepower needed, reduced compaction and better emergence.

With the C850 Air Cart, you can cover 170 acres per fill and easily seed an entire quarter section. Its accuracy is the very measure of performance. That begins with our AirPower™ 2 system that uses two separate, high-capacity fans – one for seed, one for fertilizer. The results: Greater consistency across the entire drill, more uniform seed emergence, more even flowering and canopy development, and greater yields.

* Fill time compared to 1910 550 TBH based on Internal John Deere testing.






1910 COMMODITY AIR CARTS

Precise. Productive. Smart.





1910 Commodity Air Carts

Apply bulk seed or fertilizer with the precision you expect from John Deere. The 1910 Commodity Air Cart delivers. With 10 different configurations and several widths to choose from, it's easy to match the 1910 to your seeding tool and tractor horsepower. Use the smaller size for operations requiring more than a central fill seeding or dry application system while a larger size can seed more acres per day with fewer stops to refill. Variable rate and hydraulic calibration are standard equipment, allowing for consistent drive power to the meters at all meter speeds. These features let you change rates with faster responsiveness.

Tow-between models eliminate tracking over the finished seedbed and offer better weight transfer and more stability on slopes and hillsides.

Tow-behind models present a better view of the seeding tool to let you keep a close eye on the seeding tool operating.

SPECIFICATIONS

N500 No-Till Air Drill

MACHINE CONFIGURATIONS*	7.5-in. (19.05-cm) Spacing	10-in. (25.40-cm) Spacing
N530 (30-ft.; 9.14-m)	48	36
N536 (36-ft.; 10.97-m)	58	44
N540 (40-ft.; 12.19-m)	64	48
N542 (42-ft.; 12.80-m)	68	50
N550 (50-ft.; 15.24-m)	80	60
N560 (60-ft.; 18.29-m)	96	72

P500 Air-Hoe Drill

MACHINE CONFIGURATIONS*	P540 40-ft. (12.19-m) 3-section models	P556 56-ft. (17.06-m) 5-section models	P576 76-ft. (23.16-m) 5-section models
Openers system	Independent but linked fertilizer shank and seed opener		
Standard Features	Carbide on fertilizer knife and seed opener		
Number of Openers	40	56	76
Row Spacing	12-in. (30.48-cm) (Optional Paired Row)		5.5x5-in. (140x13-mm)
Number of Ranks	3	3	5.5x5-in. (140x13-mm)
Space between Ranks	Minimum of 50-in. (127.00-cm)		56-in. (142.24-cm)

N500F SFP Air Drill

MACHINE CONFIGURATIONS*	N530F 30-ft. (9.14-m)	N536F 36-ft. (10.97-m)	N540F 40-ft. (12.19-m)	N543F 43-ft. (13.10-m)	N560F 60-ft. (18.28-m)
Seed Spacing	10-in. (25.40-cm)	10-in. (25.40-cm)	10-in. (25.40-cm)	10-in. (25.40-cm)	10-in. (25.40-cm)
Fertilizer Spacing	20-in. (50.80-cm)	20-in. (50.80-cm)	20-in. (50.80-cm)	20-in. (50.80-cm)	20-in. (50.80-cm)
Seed openers	36	44	48	52	72
Fertilizer openers	18	22	24	26	36

N500C Air Drill CCS™

MACHINE CONFIGURATIONS*	N530C 30-ft. (9.14-m)	N536C 36-ft. (10.97-m)	N540C 40-ft. (12.19-m)	N542C 42-ft. (13-m)
Dual Rank Number of Openers				
7.5-in. (19.05-cm) Spacing	48	58	64	68
10-in. (25.40-cm) Spacing	36	44	48	50
Single Rank Number of Openers				
15-in. (38.10-cm) Spacing	24	28	32	34

H500 and H500F Air-Hoe Drills

MACHINE CONFIGURATIONS*	H500 Air-Hoe Drill		H500F Air-Hoe Drill	
	Width	Row Spacing	Width	Row Spacing
3-section models	H541 (41-ft.; 12.49-m)	7.5, 10, 12.5-in. (19.05, 25.40, 31.75-cm)	H540F (40-ft.; 12.19-m)	10-in. (25.40-cm)
5-section models	H550 (50-ft.; 15.24-m)	7.5, 10, 12.5-in. (19.05, 25.40, 31.75-cm)	H550F (50-ft.; 15.24-m)	10-in. (25.40-cm)
	H561 (61-ft.; 18.59-m)	7.5, 10, 12.5-in. (19.05, 25.40, 31.75-cm)	H560F (60-ft.; 18.29-m)	10-in. (25.40-cm)

730 LL Air-Disk Drill

MACHINE CONFIGURATIONS*	28-ft. (8.53-m)	36-ft. (10.97-m)	44-ft. (13.4-m)
Mainframe Dimensions*			
Type	3-Section, 5-Bar Design with Over-Center Fold		
Cross Members	3x4-in. (75x102-mm)		
End Tubes	2x5-in. (54x127-mm)		
Hitch	6x10-in. (152x254-mm) Tubular level lift		
Rockshaft	5.5x3.75-in. (140x10-mm)		5.5x5-in. (140x13-mm)
Center Frame Width	11-ft. 9-in. (3.58-m)	11-ft. 9-in. (3.58-m)	14-ft. 9-in. (4.50-m)



Air Carts	C650 Air Cart Tow-Between	C650 Air Cart Tow-Behind	C850 Air Cart
TANKS*	Four tanks		Four tanks
Capacity Total	650 bu (22,905 L)		850-bu. (29,953-L)
Capacity per tank	Tank 1: 50-bu. (1,761-L), Tank 2: 260-bu. (9,162-L), Tank 3: 130-bu. (4,581-L), Tank 4: 210-bu. (7,400-L)		Tank 1: 50-bu. (1,761-L), Tank 2: 260-bu. (9,162-L), Tank 3: 130-bu. (4,581-L), Tank 4: 410-bu. (14,448-L)
TOWING CONFIGURATION	Tow-between		Tow-behind only
DIMENSIONS*	Tow-between		Tow-behind only
Length	39 ft. 5 in. (12.0-m)		48-ft. 0-in. (14.60-m)
Width	21 ft. 8 in. (6.62-m)		21-ft. 8-in. (6.62-m)
Height (field)	16-ft. 3-in. (4.94-m)		16-ft. 3-in. (4.94-m)
Height (transport)	13-ft. 4-in. (4.05-m)		13-ft. 3-in. (4.03-m)
WEIGHT	32,920 lbs. (14,932-kg)		40,900-lb. (18,552-kg)
CONVEYANCE	100-bu./minute (3,523-L/minute)		100-bu./minute (3,523-L/minute)
Rate	12 in. (30.5 cm)		12 in. (30.5 cm)
Tube size	19 in. (48.2 cm)		16 in. (40.7 cm)
Belt size	72 in. X 30 in. X 9-in. (183 cm X 76.2 cm X 23-cm)		72 in. X 30 in. X 9-in. (183 cm X 76.2 cm X 23-cm)
Low profile hopper	72 in. X 30 in. X 9-in. (183 cm X 76.2 cm X 23-cm)		72 in. X 30 in. X 9-in. (183 cm X 76.2 cm X 23-cm)
AIR SYSTEM	Dual Fans		Dual Fans
System type	B-type		B-type
Fan Drive	Hydraulic		Hydraulic
Blower (diameter)	27.5-in. (69.85-cm)		27.5-in. (69.85-cm)
Primary air hose	Stainless-steel 3-in. (7.62-cm)		Stainless-steel 3-in. (7.62-cm)
Maximum rate	550 lb. of seed per acre at 5.5 mph and 15 degree slope (300 lb. fertilizer and 250 lb. seed)		550 lb. of seed per acre at 5.5 mph and 15 degree slope (300 lb. fertilizer and 250 lb. seed)
METERING	Five meter cartridges; 30 approved crops		Five meter cartridges; 30 approved crops
Number	Five meter cartridges; 30 approved crops		Five meter cartridges; 30 approved crops
Meter Drive	Hydraulic		Hydraulic

1910 Commodity Air Cart

Capacity*	Tow-Between		Tow-Behind
Two Tanks	270-bu. (9,531-L)		270-bu. (9,531-L)
	350-bu. (12,355-L)		350-bu. (12,355-L)
Three Tanks	250-bu. (8,826-L)		
			340-bu. (12,002-L)
End Tubes	430-bu. (15,179-L)		430-bu. (15,179-L)
Dimensions* (Tow-Between)	Height	Length	Width
250-bu. (8,810-L)	12 ft. 5 in. (3.78m)	30 ft. 4 in. (9.25m)	13 ft. 8 in. (4.17m)
270-bu. (9,515-L)	12 ft. 9 in. (3.9m)	29 ft. 2 in. (8.9m)	14 ft. 2 in. (4.32m)
350-bu. (12,334-L)	13 ft. 6 in. (4.11m)	30 ft. 6 in. (9.32m)	14 ft. 3 in. (4.34m)
430-bu. (15,152-L)	13 ft. 6 in. (4.11m)	32 ft. 5 in. (9.88m)	14 ft. 3 in. (4.34m)
Dimensions* (Tow-Behind)	Height	Length	Width
250-bu. (8,810-L)	12-ft. 5-in. (3.78-m)	27-ft. 1-in. (8.25-m)	13-ft. 8-in. (4.17-m)
270-bu. (9,515-L)	12-ft. 9-in. (3.88-m)	25-ft. 7-in. (7.80-m)	14-ft. 2-in. (4.32-m)
340-bu. (11,981-L)	12-ft. 9-in. (3.88-m)	27-ft. 5-in. (8.35-m)	14-ft. 2-in. (4.32-m)
350-bu. (12,334-L)	13-ft. 6-in. (4.11-m)	25-ft. 11-in. (7.90-m)	14-ft. 3-in. (4.34-m)
430-bu. (15,152-L)	13-ft. 6-in. (4.11-m)	27-ft. 9-in. (8.45-m)	14-ft. 3-in. (4.34-m)
550-bu. (19,381-L)	13-ft. 6-in. (4.11-m)	28-ft. 9-in. (8.76-m)	14-ft. 3-in. (4.34-m)





Supported by one of the most responsive dealer networks in the business

Nobody cares more about keeping your equipment in solid working order than your John Deere dealer. With a complete inventory of genuine John Deere parts, highly trained service technicians, and a thorough understanding of your business, your John Deere dealer knows how to keep you and your equipment up and running.

A strong name in equipment, and a strong dealership network: get it all with John Deere.

This literature has been compiled for worldwide circulation. While general information, pictures and descriptions are provided, some illustrations and text may include finance, credit, insurance, product options and accessories NOT AVAILABLE in all regions. PLEASE CONTACT YOUR LOCAL DEALER FOR DETAILS. John Deere reserves the right to change specification and design of all products described in this literature without notice. Copyright 2021 Deere & Company.



JOHN DEERE