

# Tandem Disks • Heavy Offset Disks



Tandem Disks



Heavy Offset Disks

TM51 • DH51 • DH52 • DH53 • DH54 • DH55 • DH56 Series

## Tandem and Heavy Offset Disks. Tough enough to fill all your disking needs

Having the right equipment to handle the job. For a producer like you, that's critical to maximizing your operation's efficiency – and your profit.

So say hello to our complete line of Frontier Heavy Offset and Tandem Disks. Engineered and built to take on the tough jobs and tough conditions, you can count on these disks to deliver the durability and performance you demand.

These disks come loaded with features that make them versatile and dependable. Choose from notched, smooth or wavy disks in a variety of sizes. Adjustable blade scrapers reduce wear and provides durability. A heavy-duty, cast front hitch lasts a long time and ensures proper pull, improving performance. And the list goes on.

But such an impressive lineup of disks would mean nothing if our customers couldn't afford them. So you can count on these disks to not only perform well, but also work well within your budget.

Find out how Tandem and Heavy Offset Disks from Frontier can make a difference in your operation. Talk to your local John Deere dealer – your exclusive source for Frontier Equipment.

[www.BuyFrontier.com](http://www.BuyFrontier.com)  
[www.BuyFrontier.ca](http://www.BuyFrontier.ca)

U.S.A.  
Canada

## Tandem Disks All-purpose disks with attitude.

What's in your field? Heavy residue and hard ground? Wet, gummy soil? Rocks, debris, and other obstacles? Regardless of your conditions, the Frontier TM51 Series Tandem Disks are exceptional when it's time to really dig in on a tough day's work.

Six sturdy models made of high-strength tubular steel set this family of disks apart from the rest. Each model is ready to take a pounding, and eager to give it back. Massive blades let you muscle through tough conditions, with all the essentials of a high-impact disk including ample weight-per-blade and large blade diameters. You'll experience the kind of penetration reserved for only the most aggressive tillage tools.

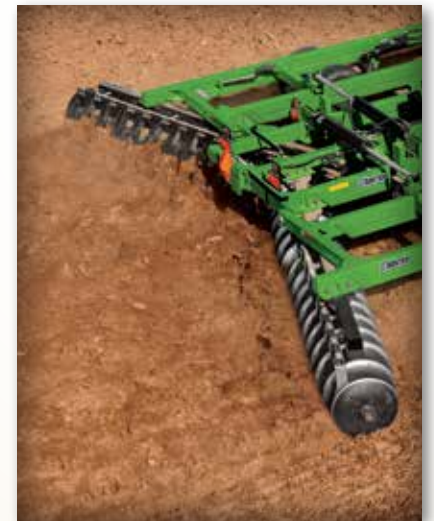
Plus, Frontier Tandem Disks are maneuverable. The hydraulic folding wings make it simple to get these disks through narrow roadways. And a lower transport height gives you some much-needed breathing room under bridges and overheads.



Disks are designed to provide maximum field coverage with each pass, yet convert to a narrow profile for easy transport. Dual folding cylinders allow both sides of the frame to hydraulically fold over to create a narrow transport width.



Frontier Tandem Disks give you the options of 309 to 370 pounds per blade; a 9-inch cutting depth; 10 1/2-inch blade spacing; and blade diameters of 26 and 28 inches.



Whether it's corn or soybean fields, cane or cotton stubble, these disks tackle any job head-on.

# Tandem Disk Specifications

Model Number	TM5118	TM5120	TM5121	TM5124	TM5129	TM5132
Duty class	General purpose	General purpose	General purpose	General purpose	General purpose	General purpose
PTO Horsepower requirements	N/A	N/A	N/A	N/A	N/A	N/A
Drawbar horsepower requirements	160 - 180 hp (119 - 134 kW)	170 - 200 hp (127 - 149 kW)	190 - 210 hp (142 - 157 kW)	220 hp (164 kW) minimum	260 hp (194 kW) minimum	280 hp (209 kW) minimum
Front hitch type	Spade	Spade	Spade	Spade	Spade	Spade
Working width	18 ft. (5.5 m)	19.5 ft. (5.9 m)	21 ft. (6.4 m)	23.5 ft. (7.2 m)	29 ft. (8.8 m)	32 ft. (9.8 m)
Transport width	13.67 ft. (4.2 m)	13.67 ft. (4.2 m)	13.67 ft. (4.2 m)	13.67 ft. (4.2 m)	19.25 ft. (5.9 m)	19.25 ft. (5.9 m)
Operating weight	15,500 lb. (7,030.7 kg)	15,850 lb. (7,189.4 kg)	16,100 lb. (7,302.8 kg)	17,920 lb. (7,842.6 kg)	22,000 lb. (9,979 kg)	24,100 lb. (10,931.6 kg)
Weight per disk blade	369 lb. (167.4 kg)	345 lb. (156.5 kg)	322 lb. (146.1 kg)	320 lb. (145.1 kg)	314 lb. (142.4 kg)	309 lb. (140.2 kg)
Number of blades	46	50	54	58	74	82
Maximum penetration	9 in. (22.9 cm)	9 in. (22.9 cm)	9 in. (22.9 cm)	9 in. (22.9 cm)	9 in. (22.9 cm)	9 in. (22.9 cm)
Blade spacing	10.5 in. (26.7 cm)	10.5 in. (26.7 cm)	10.5 in. (26.7 cm)	10.5 in. (26.7 cm)	10.5 in. (26.7 cm)	10.5 in. (26.7 cm)
Notched (front)/notched (rear)	Standard	Standard	Standard	Standard	Standard	Standard
Smooth (front)/smooth (rear)	Optional	Optional	Optional	Optional	Optional	Optional
Notched (front)/smooth (rear)	Optional	Optional	Optional	Optional	Optional	Optional
Blade size option 1	26 x .31 in. (66 x 0.8 cm)	26 x .31 in. (66 x 0.8 cm)	26 x .31 in. (66 x 0.8 cm)	26 x .31 in. (66 x 0.8 cm)	26 x .31 in. (66 x 0.8 cm)	26 x .31 in. (66 x 0.8 cm)
Blade size option 2	28 x .31 in. (71.1 x 0.8 cm)	28 x .31 in. (71.1 x 0.8 cm)	28 x .31 in. (71.1 x 0.8 cm)	28 x .31 in. (71.1 x 0.8 cm)	28 x .31 in. (71.1 x 0.8 cm)	28 x .31 in. (71.1 x 0.8 cm)
Blade size option 3	N/A	N/A	N/A	N/A	N/A	N/A
Frame type	Tandem double offset	Tandem double offset	Tandem double offset	Tandem double offset	Tandem double offset	Tandem double offset
Wheel hub bearings	Dual tapered roller bearings	Dual tapered roller bearings	Dual tapered roller bearings	Dual tapered roller bearings	Dual tapered roller bearings	Dual tapered roller bearings
Tires	8 Implement	8 Implement	8 Implement	8 Implement	8 Implement	8 Implement
Tire size	11 L x 15 in. (38.1 cm) 8 ply	11 L x 15 in. (38.1 cm) 8 ply	11 L x 15 in. (38.1 cm) 8 ply	11 L x 15 in. (38.1 cm) 8 ply	11 L x 15 in. (38.1 cm) 8 ply	11 L x 15 in. (38.1 cm) 8 ply
Tire wheel hub type	8 bolt	8 bolt	8 bolt	8 bolt	8 bolt	8 bolt
Disks gang axle size	1.63 or 2.13 in. (4.1 or 5.4 cm)	1.63 or 2.13 in. (4.1 or 5.4 cm)	1.63 or 2.13 in. (4.1 or 5.4 cm)	1.63 or 2.13 in. (4.1 or 5.4 cm)	1.63 or 2.13 in. (4.1 or 5.4 cm)	1.63 or 2.13 in. (4.1 or 5.4 cm)
Warranty <sup>1</sup>	1 year	1 year	1 year	1 year	1 year	1 year

# Heavy Offset Disks Engineered to perform

Tillage work is never easy. It requires the right equipment to get your job done as efficiently as you can. That's why we offer a wide range of Heavy Offset Disks with the sizes and features you need to suit your operation.

Our disk designs start with rugged, construction-grade frames built into an Ag disk. That engineering can stand up to the punishment of big commercial jobs, and your chores, too. Then we've added features like a sealed oil-bath case to protect tapered roller bearings from dirt and debris. We also offer you the choice of blades in a variety of sizes, weights and spacing to meet your needs, and high load absorption to take on your field conditions. And since every operation is different, we offer 33 Heavy Offset Disk models to choose from.



Frontier Heavy Offset Disks offer the right balance of weight-per-blade, penetration depth, blade spacing, and blade diameter for any soil condition.



Mix soil, renovate heavy pasture, disk heavy residue or cut down tough stubble with a Heavy Offset Disk.



DH51 through 56 Series Disks are built with sturdy construction-grade frames for more productivity and less downtime.





# Heavy Offset Disk Specifications

Model Number	DH5511	DH5513	DH5514	DH5610	DH5612	DH5613	DH5615
Duty class	Heavy duty	Heavy duty	Heavy duty	Heavy duty	Heavy duty	Heavy duty	Heavy duty
PTO Horsepower requirements	265 + hp (197 + kW)	294 + hp (219 + kW)	NA	265 + hp (197 + kW)	324 + hp (241 + kW)	NA	NA
Drawbar horsepower requirements	225 + hp (167.8 + kW)	250 + hp (186.4 + kW)	300 + hp (223.7 + kW)	225 + hp (167.8 + kW)	275 + hp (205.1 + kW)	325 + hp (242.4 + kW)	350 + hp (261 + kW)
Front hitch type	Pintle	Pintle	Pintle	Pintle	Pintle	Pintle	Pintle
Working width	11 ft. (3.4 m)	12 ft. 6 in. (3.8 m)	13 ft. 9 in. (4.2 m)	10 ft. (3.1 m)	11 ft. 6 in. (3.5 m)	13 ft. (4.0 m)	14 ft. 6 in. (4.4 m)
Transport width	12 ft. (3.7 m)	13.5 ft. (4.1 m)	14.75 ft. (4.5 m)	11 ft. (3.4 m)	12.5 ft. (3.8 m)	14 ft. (4.3 m)	15.5 ft. (4.7 m)
Operating weight	12,000 lb. (5,443.1 kg)	12,500 lb. (5,669.9 kg)	13,300 lb. (6,032.8 kg)	13,900 lb. (6,304.9 kg)	14,500 lb. (6,577.1 kg)	15,200 lb. (6,894.6 kg)	15,900 lb. (7,212.1 kg)
Weight per disk blade	600 lb. (272.2 kg)	568 lb. (257.6 kg)	554 lb. (251.3 kg)	868 lb. (393.7 kg)	806 lb. (365.6 kg)	760 lb. (344.7 kg)	722 lb. (327.5 kg)
Number of blades	20	22	24	16	18	20	22
Maximum penetration	11 in. (27.9 cm)	11 in. (27.9 cm)	11 in. (27.9 cm)	13 in. (33 cm)	13 in. (33 cm)	13 in. (33 cm)	13 in. (33 cm)
Blade spacing	14 in. (35.6 cm)	14 in. (35.6 cm)	14 in. (35.6 cm)	17 in. (43.2 cm)	17 in. (43.2 cm)	17 in. (43.2 cm)	17 in. (43.2 cm)
Notched (front)/notched (rear)	Standard	Standard	Standard	Standard	Standard	Standard	Standard
Smooth (front)/smooth (rear)	N/A	N/A	N/A	N/A	N/A	N/A	N/A
Notched (front)/smooth (rear)	N/A	N/A	N/A	N/A	N/A	N/A	N/A
Blade option 1	32 x .5 in. (81.3 x 1.27 cm)	32 x .5 in. (81.3 x 1.27 cm)	32 x .5 in. (81.3 x 1.27 cm)	36 x .5 in. (91.4 x 1.27 cm)	36 x .5 in. (91.4 x 1.27 cm)	36 x .5 in. (91.4 x 1.27 cm)	36 x .5 in. (91.4 x 1.27 cm)
Blade Option 2	N/A	N/A	N/A	N/A	N/A	N/A	N/A
Blade option 3	N/A	N/A	N/A	N/A	N/A	N/A	N/A
Frame type	Single offset rigid	Single offset rigid	Single offset rigid	Single offset rigid	Single offset rigid	Single offset rigid	Single offset rigid
Wheel hub bearings	Dual tapered roller bearings	Dual tapered roller bearings	Dual tapered roller bearings	Dual tapered roller bearings	Dual tapered roller bearings	Dual tapered roller bearings	Dual tapered roller bearings
Tires	2 Radial industrial	2 Radial industrial	2 Radial industrial	2 Radial industrial	2 Radial industrial	2 Radial industrial	2 Radial industrial
Tire size	385/65R22.5	385/65R22.5	385/65R22.5	385/65R22.5	385/65R22.5	385/65R22.5	385/65R22.5
Tire wheel hub type	10 bolt	10 bolt	10 bolt	10 bolt	10 bolt	10 bolt	10 bolt
Disks gang axle size	2.5 in. (6.4 cm)	2.5 in. (6.4 cm)	2.5 in. (6.4 cm)	2.5 in. (6.4 cm)	2.5 in. (6.4 cm)	2.5 in. (6.4 cm)	2.5 in. (6.4 cm)
Warranty <sup>1</sup>	1 year	1 year	1 year	1 year	1 year	1 year	1 year

## We dug deep to design what you need

The Frontier difference becomes obvious the moment you examine the details.

Start with our wide range of models and options. It would be hard to find another product line that lets you choose exactly the right downward pressure, blade spacing, and blade diameter for any environmental condition.

Then look a little deeper into the details that you don't often see with disks. For example, tapered roller bearings are enclosed in an oil-bath case to keep out dirt and debris, which means less maintenance and more profitable working time. Plus, many models give you the option of smooth, notched, or wavy blades.

Take a closer look and you will see why Frontier is your source for efficient, reliable disks.



Tandem flotation tires promote level disking depth in the field and a steadier ride on the road.

# From factory to field

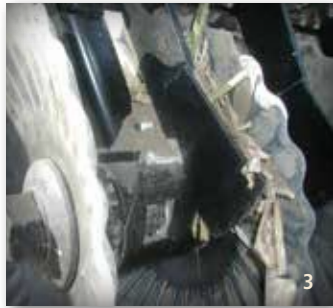
(1) Our innovative oil-bath case encloses tapered dual roller bearings to keep out dirt and debris.



(2a, 2b, 2c) Successful disking begins with the right blade. Choose between smooth, notched, or wavy.



(3) Fully adjustable blade scrapers reduce wear in light, dry soil and keep you going even in wet, sticky soil.



(4) The heavy-duty, cast front hitch lasts and ensures proper pull for consistent performance.



(5) Tandem Disks provide end washers to help keep the gang shaft end nut secure during operation.



(6) Increase productivity by pulling a harrow or other attachment from the rear hitch.



(7) A sturdy, adjustable level-lift hitch makes sure weight stays on disk blades, where it does the most good. Plus, this design lets you make short, tight turns while maintaining excellent blade penetration.



(8) Protect disk blades during transport with the leveling linkage. In the field, it also promotes stability over rough terrain for a smooth, consistent soil profile. Available on Heavy Offset Disk only.



(9) Hydraulic wing control valve allows varying hydraulic pressure to the wing-fold cylinders, which transfers weight from the mainframe to the wings for improved penetration in hard ground or heavy soil.



(10) The simple bolt adjustment allows the gang angle to be more aggressive in heavy residue or less aggressive in lighter soils on offset disks.



(11) The over-center locking wing design on 21- to 22-foot offset disks prevents wings from flexing up during operation.



(12) Keep gangs tight for optimum performance with this handy wrench (shown in storage position).





## Frontier Disks lay the foundation for a successful crop



### Our disks, your choice

Agronomists agree that the foundation of every successful crop is a well-prepared seedbed that ensures good seed-to-soil contact. Prepare yours with the right Heavy Offset or Tandem Disk.

If every farmer did things the same way, and if every soil texture were the same, there would be no need for more than one disk. But in the real world, every operation is different. This is why Frontier offers 33 models of Heavy Offset Disks (including the new DH54, DH55 and DH56) and six models of Tandem Disks.

Frontier Equipment offers effective, reliable disk options for any conditions you are likely to encounter. You make the decision about which model and option is right for your operation. Be sure to ask your local John Deere dealer about Frontier Heavy Offset or Tandem Disks. John Deere is your best source for equipment, and advice, and it's the **only** source for Frontier disks and other equipment.



<sup>1</sup> Hour and/or usage limitations may apply. See Warranty for new John Deere Agricultural Equipment or contact your local dealer for details. This literature has been compiled for worldwide circulation. While general information, pictures and descriptions are provided, some illustrations and text may include finance, credit, insurance, and product options/accessories available at an additional cost that may not be available in all regions. CONTACT YOUR LOCAL JOHN DEERE DEALER FOR DETAILS. Frontier Equipment reserves the right to change specifications and design of products described in this literature without notice. John Deere, the leaping deere symbol, and John Deere's green and yellow trade dress are the trademarks of Deere & Company. Copyright 2014, Frontier Equipment

U.S.A. [www.BuyFrontier.com](http://www.BuyFrontier.com)  
Canada [www.BuyFrontier.ca](http://www.BuyFrontier.ca)