

Rigid Deck Rotary Cutters

Standard-Duty, Medium-Duty and Heavy-Duty.



JOHN DEERE



Choose value. Choose performance. Choose John Deere.

At first glance, different brands of rotary cutters can look a lot alike. That's not surprising – a rotary cutter is a simple machine – driveshaft, gearbox, spinning blades. But the stresses rotary cutters take as they work across a field are anything but simple. Twisting, vibration and impact stresses attack the frame, the hitch, the drives, the wheels and the gearbox.

All these stresses are why you should buy a rotary cutter based on design, rather than price. Various brands of rotary cutters may look similar, but you'll find the performance and reliability are dramatically different.

Your John Deere dealer has 13+ new Frontier rigid deck rotary cutter models available. One is right for your tractor, your mowing challenges and your budget.





CONTENTS

Standard-Duty Rotary Cutters

(cut grass, weeds and brush up to 1-inch diameter) 4-9

Medium-Duty Rotary Cutters

(cut grass, weeds and brush up to 2 inches in diameter) 10-15

Heavy-Duty Rotary Cutters

(cut grass, weeds, stalks and brush up to 3-4 inches in diameter) 16-21



STANDARD-DUTY CUTTERS

The Frontier™ RC Series – fast, reliable pasture mowing and homestead trimming.

Simple, strong, reliable – that describes the Frontier RC20 Series and RC40 Series. There are four cutting widths – from 4 feet to 7 feet wide (1.2 m to 2.1 m). All feature a 3-point hitch design, a rugged gearbox with a 2-year limited warranty and easy cutting-height adjustments. And all are ready to zip through tall grasses, tough weeds and brush up to 1 inch in diameter.

Here are the model choices

RC2048 – cuts 48 inches (122 cm) wide, for tractors 18 to 45 PTO hp¹.

RC2060 – cuts 60 inches (152 cm) wide, for tractors 20 to 65 PTO hp¹.

RC2072 – cuts 72 inches (183 cm) wide, for tractors 25 to 65 PTO hp¹.

RC2084 – cuts 84 inches (213 cm) wide, for tractors 45 to 90 PTO hp¹.

RC4048 – cuts 48 inches (122 cm) wide, for tractors 15 to 40 PTO hp¹.

RC4060 – cuts 60 inches (152 cm) wide, for tractors 20 to 55 PTO hp¹.

RC4072 – cuts 72 inches (183 cm) wide, for tractors 25 to 55 PTO hp¹.

¹Manufacturer's estimate of power (ISO) per 97/68/ED.





Top-level features at a value price

The **Frontier™ RC20 Series and RC40 Series Rotary Cutters** are ideal for small pastures, paddocks, food plots and open acreage that needs trimming. These models stand out in their price category. Precision-cut steel and quality welding provide a tight fit of components. The rugged driveline and gearbox are designed for years of use. The powder-coat paint provides a long-lasting, scratch-resistant finish. And the deck has unobstructed edges so debris and water can fall off, helping keep the finish looking good and rust free.

You'll also like the quality of cut. The blades have a tip speed designed to create a suction to lift up grass and weeds for a clean cut. That's the value of the Frontier RC20 Series and RC40 Series Rotary Cutters— a quality design, quality build and a quality cut – all at a price that's easy on your wallet.

- 1 Owner's Manual Tube**
Waterproof tube keeps the owner's manual handy and protected. In the owner's manual you'll find maintenance is fast and easy, with just a few lube points every 8 hours.
- 2 Gearbox**
Rugged gearbox is backed by a two-year limited warranty. (See dealer for details.) Large mounting plate spreads stresses.
- 3 Rounded Back**
Round-back design allows for close maneuvering around trees, fences and other obstacles.
- 4 Mowing height adjustment**
Changing cutting height is simple. Just change holes on the tail wheel support arm, then level the cutter with the tractor's 3-point hitch. Cut as low as 1.5 inches up to 9 inches.
- 5 Rotary Cutter Apron**
Lower edge of the rotary cutter apron has a "Z-profile," adding strength and rigidity to the cutter sides.
- 6 Pan-type blade holder**
Pan-type blade holder protects the drive from stumps, rocks and other obstructions. Heat-treated steel blades create a powerful suction within the cutting chamber to draw up dense grass and weeds for a clean cut.

FRONTIER™



RC2048
Cutting width: 4 ft. (1.2 m)

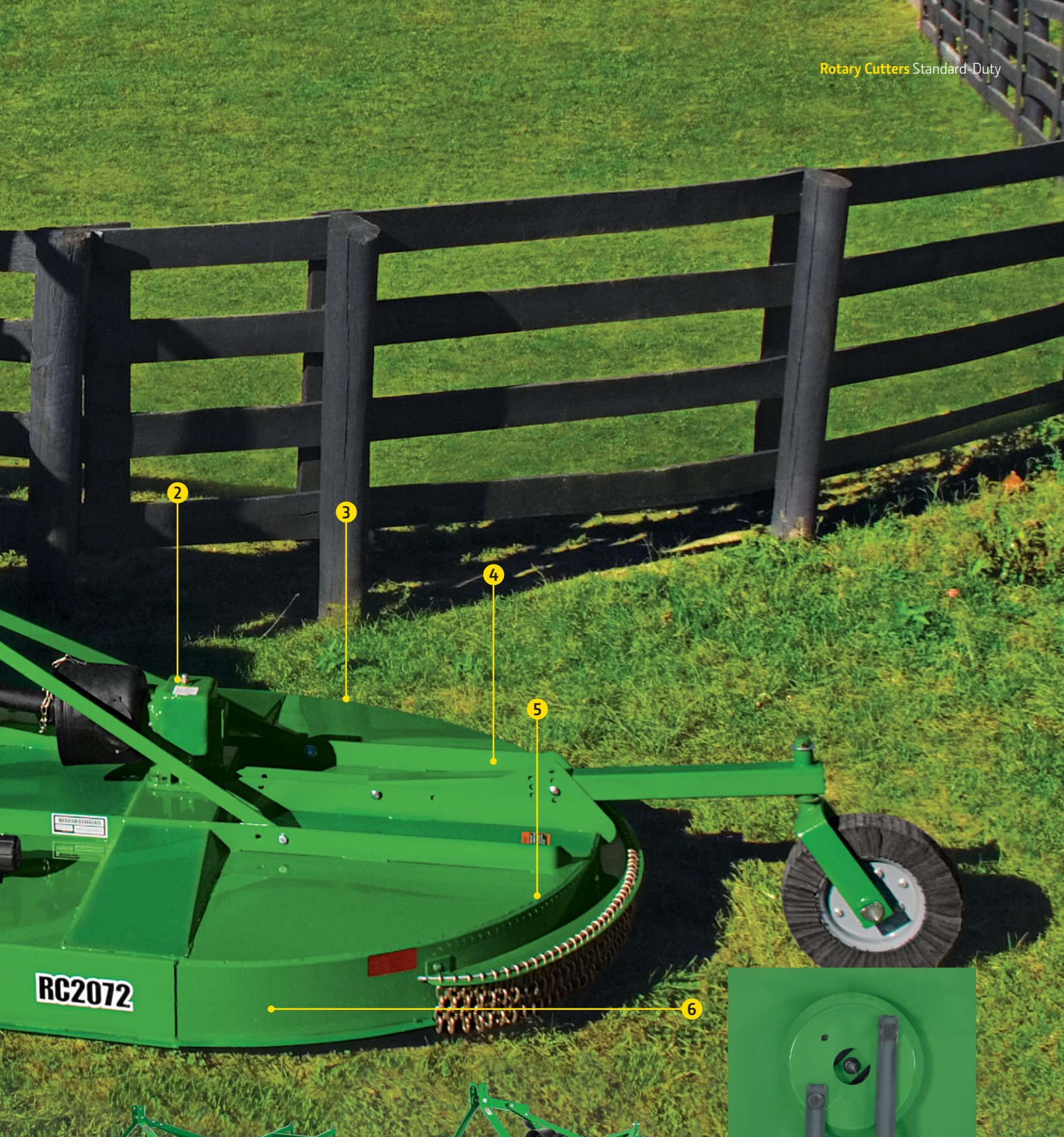


RC2060
Cutting width: 5 ft. (1.5 m)



RC2072
Cutting width: 6 ft. (1.8 m)





RC2084
Cutting width: 7 ft. (2.1 m)



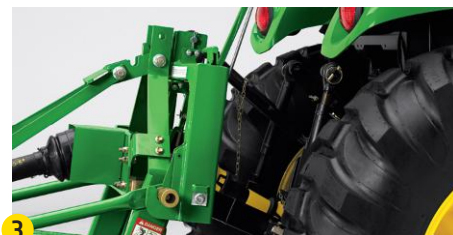
RC4060
Cutting width: 5 ft. (1.5 m)



Also available but not shown:
4 ft. (1.2 m), RC4048 and 6 ft. (1.8 m), RC4072

Choose the options right for your property

- 1 All rotary cutters come standard with **front rubber deflector and rear steel deflector** to reduce dust when cutting in dry conditions. Plus, these solid deflectors hold clippings within the cutting chamber creating a mulching effect.
- 2 Choose the **optional front and rear deflectors** to stop or deflect objects hit by the spinning blades. Front and rear safety chains that deflect flying debris, yet let uncut material move easily into the cutter, also come standard.
- 3 For an even easier hookup, get the **John Deere iMatch™ quick-hitch system**, compatible with RC20 Series and RC40 Series Rotary Cutters. It allows you to hook up the 3-point hitch, and the PTO drive without leaving the tractor seat. Hookup takes seconds, and there's no bending or lifting.
- 4 Select either the **standard solid rubber tire** or the **optional laminate tire** (shown). The laminate tire is longer-lasting and provides more support in sandy or light soils compared to the standard solid rubber tires. Dual tire option available on RC2084 only.



	RC2048	RC2060	RC2072	RC2084	RC4048	RC4060	RC4072
Cutting width	48 in. (1220 mm)	60 in. (1524 mm)	72 in. (1830 mm)	84 in. (2134 mm)	48 in. (1219 mm)	60 in. (1524 mm)	72 in. (1829 mm)
Cutting height	1.5-9 in. (38-229 mm)	1.5-9 in. (38-229 mm)	1.5-9 in. (38-229 mm)	1.75-11 in. (44.45-279.4 mm)	2-9 in. (50.8-229 mm)	2-9 in. (50.8-229 mm)	2-9 in. (50.8-229 mm)
Brush cutting capacity	0 - 1 in. (0-25 mm)	0 - 1 in. (0-25 mm)	0 - 1 in. (0-25 mm)	0 - 1 in. (0-25 mm)	1 in. (25.4 mm)	1 in. (25.4 mm)	1 in. (25.4 mm)
Cutting chamber depth	7.5 in. (190 mm)	7.5 in. (190 mm)	7.5 in. (190 mm)	9.75 in. (248 mm)	7 in. (177.8 mm)	7 in. (177.8 mm)	7 in. (177.8 mm)
Tractor PTO hp range*	18 - 45 PTO hp (13.4 - 33.6 kW)	19 - 65 PTO hp (14.2 - 48.5 kW)	25 - 65 PTO hp (18.6 - 48.5 kW)	45 - 90 PTO hp (33.6 - 67.1 kW)	15 - 40 hp (11.2 - 29.8 kW)	20-55 hp (14.9-41.0 kW)	25-50 hp (18.6-41.0 kW)
Tractor PTO speed	540 rpm	540 rpm	540 rpm	540 rpm	540 rpm	540 rpm	540 rpm
Hitch	Lift-Type Cat. 1, adaptable to 2, iMatch™	Lift-Type Cat. 1, adaptable to 2, iMatch™	Lift-Type Cat. 1, adaptable to 2, iMatch™	Lift-Type Cat. 2, Cat. 2 Quick-hitch compatible	3-Point hitch, Cat. 1, iMatch™ compatible	3-Point hitch, Cat. 1, iMatch™ compatible	3-Point hitch, Cat. 1, iMatch™ compatible
Quik-Knect™ compatibility	Yes	Yes	Yes	Yes	Yes	Yes	Yes
Overall width	51 in. (1291.4 mm)	63 in. (1600.2 mm)	75 in. (1905 mm)	88 in. (2235 mm)	52.3 in. (1328.4 mm)	61.3 in. (1557 mm)	73.3 in. (1861.8 mm)
Overall length	86.6 in. (2199.6 mm)	101.2 in. (2570.5 mm)	111.5 in. (2832.1 mm)	124 in. (3150 mm)	90.25 in. (2292.34 mm)	98.25 in. (2495.6 mm)	111 in. (2819.4 mm)
Approx. weight	503 lb. (228 kg)	590 lb. (267.6 kg)	694 lb. (314.8 kg)	1,100 lb. (499 kg)	410 lb. (186.0 kg)	494 lb. (224.1 kg)	575 lb. (260.8 kg)
Deck thickness, gauge	12 ga, 0.105 in. (2.65 mm)	11 ga, 0.12 in. (3 mm)	11 ga, 0.12 in. (3 mm)w	10 ga, 0.135 in. (3.4 mm)	12 ga, 0.105 in. (2.65 mm)	12 ga, 0.105 in. (2.65 mm)	12 ga, 0.105 in. (2.65 mm)
Skirt thickness, gauge	12 ga, 0.105 in. (2.65 mm)	11 ga, 0.12 in. (3 mm)	11 ga, 0.12 in. (3 mm)	10 ga, 0.135 in. (3.4 mm)	12 ga, 0.105 in. (2.65 mm)	12 ga, 0.105 in. (2.65 mm)	12 ga, 0.105 in. (2.65 mm)
Driveline protection	Shear bolt or slip clutch	Shear bolt or slip clutch	Shear bolt or slip clutch	Slip clutch	PTO slip clutch	PTO slip clutch	PTO slip clutch
Blades	Heat treated, suction	Heat treated, suction	Heat treated, suction	Heat treated, suction	Heat-treated alloy steel	Heat-treated alloy steel	Heat-treated alloy steel
Blade tip speed	13,090 ft./min. (66.5 m/s)	14,335 ft./min. (72.8 m/s)	14,955 ft./min. (76 m/s)	14,380 ft./min. (73 m/s)	13,100 ft./min. (66.5 m/s)	13,620 ft./min. (69.2 m/s)	14,340 ft./min. (72.8 m/s)
Blade holder	Round pan-type	Round pan-type	Round pan-type	Round pan-type	Oval pan-type	Oval pan-type	Oval pan-type
Laminated tire	15 in. (381 mm), 3.75 in. (95.25 mm)	15 in. (381 mm), 3.75 in. (95.25 mm)	15 in. (381 mm), 3.75 in. (95.25 mm)	Single or dual	4x16 in. (101.6x406.4 mm)	4x16 in. (101.6x406.4 mm)	4x16 in. (101.6x406.4 mm)
Front deflector	Foot guard/belting or chain	Foot guard/belting or chain	Foot guard/belting or chain	Foot guard/belting or chain	Chain shield	Chain shield	Chain shield
Rear deflector	Metal or chain	Metal or chain	Metal or chain	Metal or chain	Chain shield	Chain shield	Chain shield
Warranty	1 year	1 year	1 year	1 year	3-year limited on gear box	3-year limited on gear box	3-year limited on gear box

(Specifications and design subject to change without notice.)

*The engine horsepower and torque information for non-Deere engines are provided by the engine manufacturer to be used for comparison purposes only. Actual operating horsepower and torque may be less. Refer to the engine manufacturer's web site for additional information.



MEDIUM-DUTY CUTTERS

Double-deck design delivers strength and lasting beauty

Built with John Deere's patented double-deck design, the Medium-Duty Rotary Cutters are ready for tough mowing. That's because the double-deck design provides more strength and better material flow. There are five models – all are ready to zip through tall grasses, tough weeds and brush up to 2 inches (17.8 cm) in diameter.

Here are the model choices

RC5M – cuts 5 feet wide (1.5 m), for tractors minimum 25 PTO hp.

RC6M – cuts 6 feet wide (1.8m), for tractors minimum 30 PTO hp¹.

RC7M – cuts 7 feet wide (2.1 m), for tractors minimum 50 PTO hp.

RC8M – multi-spindle, cuts 8 feet wide (2.4 m), for tractors 40-50 minimum PTO hp varies on type.

RC10M – multi-spindle, cuts 10 feet wide (3 m), for tractors 40-60 minimum PTO hp varies on type.



¹The engine horsepower and torque information are provided by the engine manufacturer to be used for comparison purposes only.

Actual operating horsepower and torque will be less. Refer to the manufacturer's website for additional information.

¹Manufacturer's estimate of power (ISO) per 97/68/ED.



Unique design keeps these cutters running better, longer.

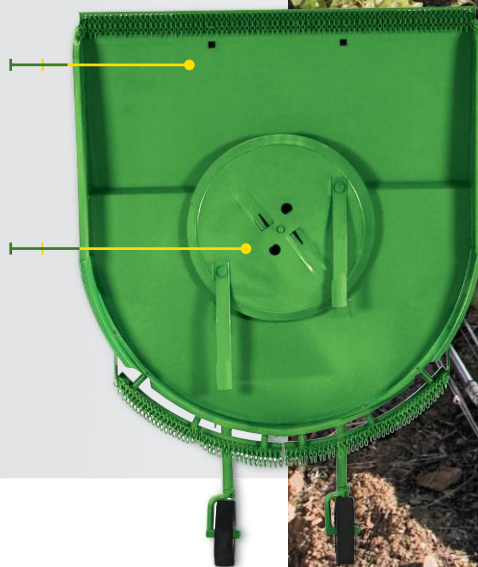
The **Medium-Duty Rotary Cutter** models will fit perfectly into a wide variety of farms, properties and landscape maintenance firms. These John Deere rotary cutters look different because they have the double-deck design – a design that adds strength and durability, and provides improved crop flow.

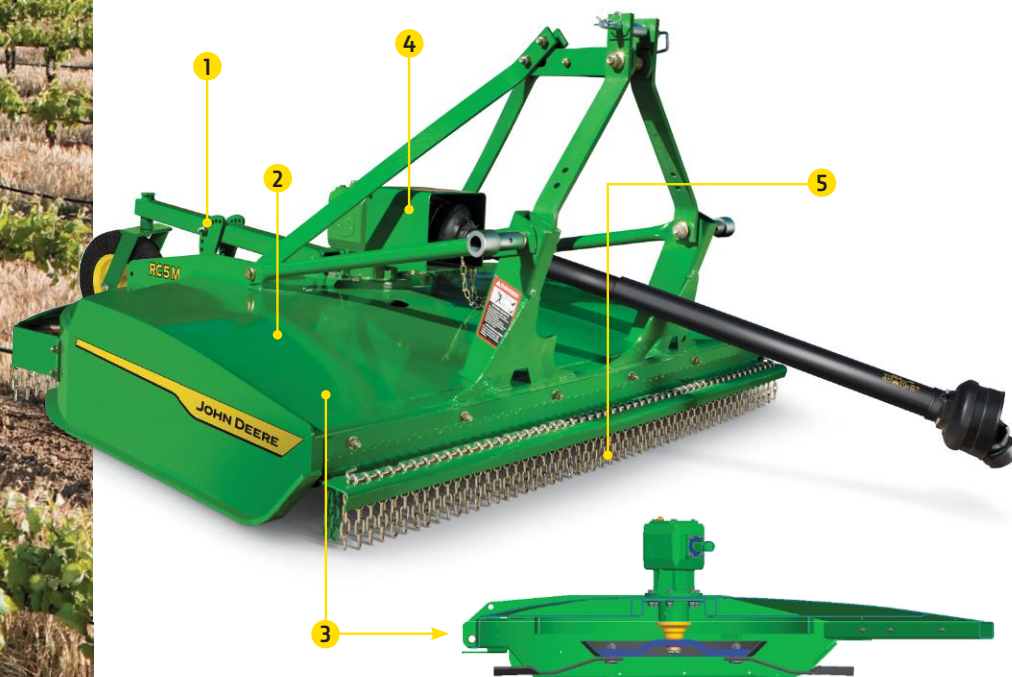
The smooth, dome-shaped top deck sheds water and debris, while the flat bottom deck absorbs the punishment from rocks, stumps and flying objects. The bottom deck absorbs the abuse, so the top deck stays nice and smooth – no dents, no dings, no holes.

The internal supports, sandwiched between the top and bottom decks, add to the frame's strength and are key to the smooth and obstruction-free MaxFlow cutting chamber. Since the MaxFlow cutting chamber is free of obstructions, there's better crop flow and better distribution of cut material.

With stiffeners between the decks, the underside of the bottom deck is smooth which improves cutting performance and material flow. This is the MaxFlow cutting chamber. It lifts long-stemmed, dense grasses and heavy residue for a clean cut and then distributes them evenly.

The pan-type blade holder, or "stump jumper," protects the gearbox output shaft from stumps, rocks and other obstructions.





- 1 Changing cutting height is simple.** On 3-point and semi-mount models, just move the bolt on the tail wheel support arm to select a height of cut. On pull-type models, set cutting height hydraulically from the tractor seat.
- 2 Curved top of the cutter** sheds water and crop material. And since the lower deck absorbs dings from rocks and field obstructions, the upper deck stays clean and smooth, preventing rust.
- 3 Patented double-deck design** improves strength and cutting performance. Separate decks form the upper and lower surfaces of the rotary cutter frame. Internal stiffeners are sandwiched between the two decks, providing superior strength and rigidity.
- 4 John Deere gearboxes** are backed by a five-year limited warranty.* (See dealer for details.) Blades and drive components are protected by a slip clutch.
- 5 Front and rear safety chain shields** are standard. They deflect flying debris, yet let uncut material move easily into the cutter.

*Usage limitations may apply.

See Warranty for new John Deere Agricultural Products at your local dealer for details.

Connect your rotary cutter the easy way with the John Deere Quik-Knect™ System. No need to align splines. No muscling or forcing into position.

Consider hitch and tire options.

- 1 Medium-Duty Cutters with the **3-point hitch** offer better maneuverability to mow around obstacles and back into corners. The RC8M and RC10M give you additional hitch options.
- 2 The **pull-type hitch** works great in fields with long rows and few obstacles. Plus, pull-type models work with tractors with no 3-point or limited hitch lift capacity.
- 3 **Semi-mounted models attach** to the tractor's lower draft links. They work well with tractors with lower horsepower or limited lift capacity.
- 4 **Semi-mount hydraulic-offset cutters** are the right choice for orchards, groves, vineyards or fields bordered with low-hanging trees. The cutter can be offset up to 13 inches to the right or left.
- 5 All these Medium-Duty Cutters are available with the **durable laminate tire**. The RC8M and RC10M pull-type can also be outfitted with severe-duty ag tires for improved flotation in soft ground and smoother long-distance travel.

The **iMatch™ quick-hitch system** will speedup cutter hookup. Simply back up to the tractor and lift to connect the 3-point or lower draft links.



1
3-point hitch
attachment on
lift-type models



2
Pull-type hitch



3
Semi-mount
models attach



4
Semi-mount hydraulic
offset cutters



5

A.

B.

C.

D.

E.

A. 15.5x3.75 in.
laminated
(hub)/yellow,
RC5M, RC6M

B. 21x7x12 in. 16PR
severe-duty ag
(4-bolt)
RC8M, RC10M,
RC15M (pull-type)

C. 21x5.25 in.
laminated
(4-bolt)
RC8M, RC10M
(pull-type)

D. 15.5x5 in.
laminated
(4-bolt)
RC8M, RC10M
(all other)

E. 15.5x3.75 in.
laminated
(4-bolt)
RC7M

	RC5M	RC6M	RC7M	RC8M	RC10M
Cutting width	5 ft. (1.5 m)	6 ft. (1.8 m)	7 ft. (2.1 m)	8 ft. (2.5 m)	10 ft. 6 in. (3.2 m)
Cutting height	1 to 9 in. (25 to 229 mm)	1 to 9 in. (25 to 229 mm)	1 to 9 in. (25 to 229 mm)	1 to 12 in. (25 to 305 mm)	1 to 12 in. (25 to 305 mm)
Overall width	5 ft. 4 in. (1.6 m)	6 ft. 3 in. (1.9 m)	Lift-type: 7 ft. 4 in. (2.2 m)	8 ft. 6 in. (2.6 m)	10 ft. 9 in. (3.3 m)
Overall length	Lift-type: 7 ft. 3 in. (2.2 m)	Lift-type: 9 ft. 6 in. (2.9 m)	10 ft. 6 in. (3.2 m)	Lift-type: 9 ft. 3 in. (2.8 m); Pull-type: 13 ft. 3 in. (4.0 m); Semi-mount: 9 ft. 2 in. (2.8 m) Semi-mount offset: 9 ft. 7 in. (2.9 m)	
Transport width	N/A	N/A	N/A	N/A	N/A
Body depth	8.5 in. (216 mm)	8.5 in. (216 mm)	8.5 in. (216 mm)	8.5 in. (216 mm)	8.5 in. (216 mm)
Deck thickness	0.25 in. (6 mm) Upper deck: 0.12 in. (3 mm) Lower deck: 0.12 in. (3 mm)	0.28 in. (7 mm); Upper deck: 0.14 in. (3.5 mm); Lower deck: 0.14 in. (3.5 mm)		0.25 in. (6 mm); Upper deck: 0.12 in. (3 mm); Lower deck: 0.12 in. (3 mm)	
Skirt thickness	0.24 in. (6 mm)	0.24 in. (6 mm)	0.24 in. (6 mm)	0.19 in. (5 mm)	0.19 in. (5 mm)
Driveline protection	Tractor to center gearcase: Slip clutch	Tractor to center gearcase: Slip clutch	Tractor to center gearcase: Slip clutch	Tractor to center gearcase: Self-adjusting clutch Center to outer gearcases: Shock-absorbing shafts	Tractor to center gearcase: Self-adjusting clutch Center to outer gearcases: Shock-absorbing shafts
Number of gearcases	1	N/A	N/A	N/A	N/A
Gearcase power rating	540 rpm center (continuous): 75 hp (56 kW) 540 rpm center (peak): 90 hp (67 kW)	540 rpm center (continuous): 75 hp (56 kW) 540 rpm center (peak): 90 hp (67 kW)	540 rpm center (continuous): 75 hp (56 kW) 540 rpm center (peak): 100 hp (75 kW)	540 rpm center (continuous): 120 hp (89 kW) 540 rpm center (peak): 130 hp (97 kW) 540 rpm outer (continuous): 75 hp (56 kW) 540 rpm outer (peak): 100 hp (75 kW)	540 rpm center (continuous): 120 hp (89 kW) 540 rpm center (peak): 130 hp (97 kW) 540 rpm outer (continuous): 75 hp (56 kW) 540 rpm outer (peak): 100 hp (75 kW)
Bladeholder	Round pan (stump jumper)	Round pan (stump jumper)	Round pan (stump jumper)	Round pan (stump jumper)	Round pan (stump jumper)
Blade	Suction, 0.5x4 in. (12.7x102 mm)	Suction, 0.5x4 in. (13x102 mm)	Suction, 0.5x4 in. (12.7x102 mm)	Suction, 0.5x4 in. (13x102 mm)	Suction, 0.5x4 in. (13x102 mm)
Blade-tip speed	540 rpm: 14,121 ft./min. (71.7 m/s)	540 rpm: 17,416 ft./min. (88.5 m/s)	540 rpm: 17,542 ft./min. (89.1 m/s)	540 rpm: 14,955 ft./min. (76 m/s)	540 rpm: 16,644 ft./min (85 m/s)
Brush-cutting capacity	2 in. (51 mm)	2 in. (51 mm)	2 in. (51 mm)	2 in. (51 mm)	2 in. (51 mm)
Hitch category	Cat. 1 conv. to Cat. 2	Cat. 1 conv. to Cat. 2	Cat. 2 or 3N	Lift-type: Cat. 2, 3, or 3N Pull-type: N/A Semi-mount: Cat. 2, 3, or 3N Semi-mount hydraulic offset: Cat. 2, 3, or 3N to right-or left-hand side: 0 to 13 in. (0 to 330 mm)	Lift-type: Cat. 2, 3, or 3N Pull-type: N/A Semi-mount: Cat. 2, 3, or 3N Semi-mount hydraulic offset: Cat. 2, 3, or 3N to right-or left-hand side: 0 to 13 in. (0 to 330 mm)
Minimum tractor PTO power	Lift-type: 25 hp (18.6 kW)	Lift-type: 30 hp (22 kW)	Lift-type: 50 hp (30 kW)	Lift-type: 50 hp (37 kW) Pull-type, semi-mount, offset: 40 hp (30 kW)	Lift-type: 60 hp (45 kW) Pull-type, semi-mount, offset: 40 hp (30 kW)
Weight (less attachments)	Lift-type: 823 lb. (373 kg)	Lift-type: 1,053 lb. (478 kg)	Lift-type: 1,332 lb. (604 kg)	Lift-type: 1,670 lb. (758 kg) Pull-type: 1,727 lb. (783 kg) Semi-mount: 1,552 lb. (704 kg) Semi-mount offset: 1,595 lb. (724 kg)	Lift-type: 1,948 lb. (884 kg) Pull-type: 2,001 lb. (908 kg) Semi-mount: 1,848 lb. (838 kg) Semi-mount offset: 1,942 lb. (881 kg)
Tires	Lift-type (laminated) 15.5x3.75 in. (381x95.25 mm)	Lift-type (laminated) 15.5x3.75 in. (381x95.25 mm)	Lift-type (4-bolt, laminated): 15.5x3.75 in. (381x95.25 mm)	Lift-type (4-bolt, laminated): 15.5x5 in. (394x127 mm); Semi-mount (4-bolt, laminated): 15.5x5 in. (394x127 mm) Pull-type (4-bolt, laminated): 21x5.25 in. (533x133 mm); (16PR severe-duty ag): 21x7x12 in. (533x178x305 mm)	

(Specifications and design subject to change without notice.)



HEAVY-DUTY ROTARY CUTTERS

Double-deck strength, plus more heavy-duty features

These are the cutters for tough farm and roadside jobs. They feature the John Deere patented double-deck design, plus more steel and stronger bearings than the medium-duty models. There are four non-folding heavy-duty models, all are ready to cut tall grasses, tough stalks, brush and saplings up to 4 inches in diameter.

The Heavy-Duty Series Rotary Cutters offer a number of key features that are designed to give you clean, more consistent cutting. The deeper cutting chamber, for example, provides more lift to thoroughly cut and shred dense material. The fast blade-tip speed ensures clean cutting and fine shredding of even the toughest materials (RC6R: 155 mph [250 km/h] and RC7R: 183 mph [295 km/h]). The forward-tip adjustment allows the cutter to be tilted forward slightly, so most of the cutting occurs in the front while the shredding action occurs toward the rear. This improves cutting performance and reduces the horsepower required to operate the rotary cutter. The tapered rear opening evenly spreads shredded material across the entire width of cut which reduces windrowing and leaves a uniform blanket of mulch. All this means that you get a clean, even cut. Every time.

Here are the model choices

RC6R – cuts 6 feet wide (1.8 m), for tractors minimum 40 PTO hp†.

RC7R – cuts 7 feet wide (2.1 m), for tractors minimum 45 PTO hp†.

RC10R – multi-spindle, cuts 10 feet wide (3 m), for tractors 50-80 minimum PTO hp varies on type†.

RC14R – multi-spindle, cuts 14 feet wide (4.3 m), for tractors 60-80 minimum PTO hp varies on type†.

†Manufacturer's estimate of power (ISO) per 97/68/ED.



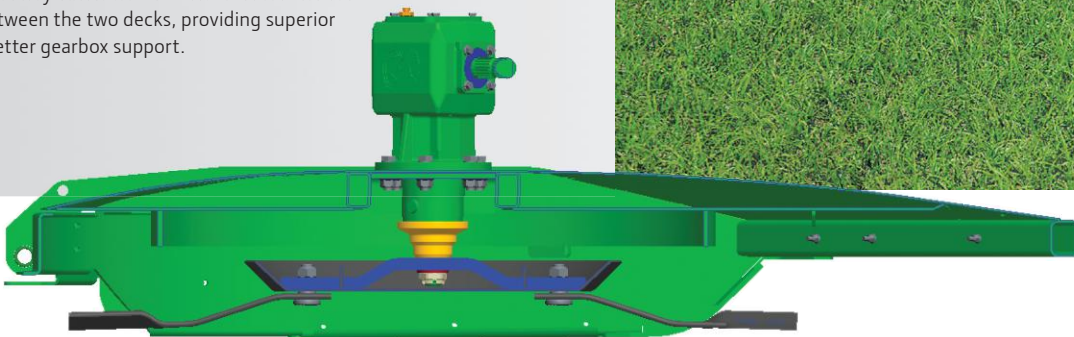
Ready to chop stalks, clear brush, and mow roadsides

The Heavy-Duty Rotary Cutters take the patented double-deck design and add thicker steel, stronger bearings and heavier drive components. That's why these rotary cutters are ready to take on thicker brush, tougher stalks and longer hours.

Put these Heavy-Duty Rotary Cutters to work reclaiming overgrown pastures, mowing right-of-ways and chopping heavy row-crop residue. With the exclusive double-deck design, you are ready with great strength and better crop flow. The MaxFlow cutting chamber is free of obstructions because in the double-deck design, deck support members are sandwiched between the upper and lower decks. That means an unrestricted airflow, which translates into cleaner cutting and more uniform distribution of cut material.

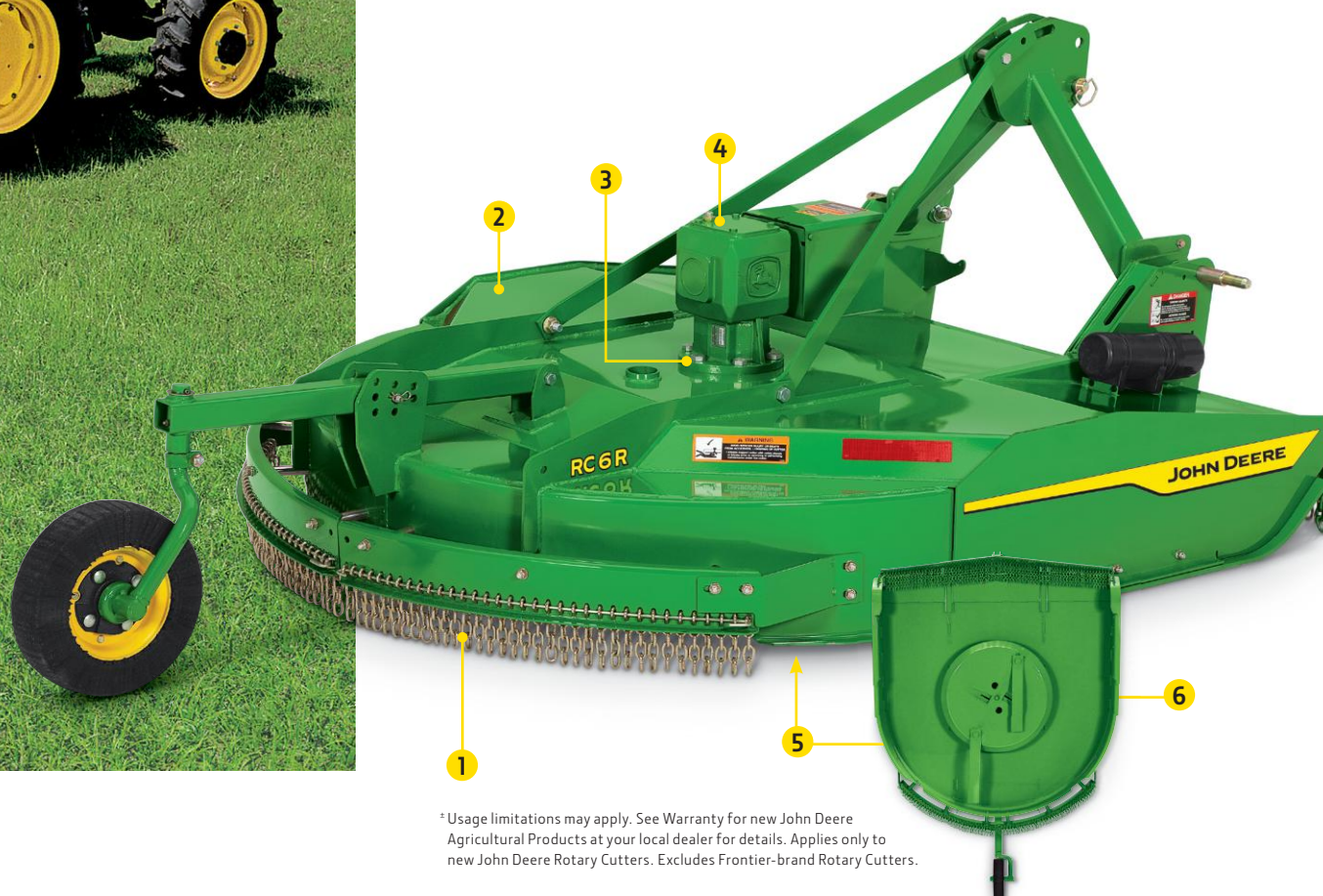
Put a Heavy-Duty Rotary Cutter to work and enjoy the great performance, the clean cut and the good-looking fields and roadsides.

Heavy-Duty models feature the patented **double-deck design**, but with more strength (than medium-duty models) for tougher cutting. Strong upper and lower decks form the rotary cutter frame. Internal stiffeners are sandwiched between the two decks, providing superior strength and better gearbox support.





- ❶ **Front and rear safety chain shields** are standard. They deflect flying debris, yet let uncut material move easily into the cutter.
- ❷ Because the lower deck absorbs dings from rocks and field obstructions, the **upper deck stays smooth** – free of dents and dings that attract rust. The curved top of the cutter sheds water and crop material.
- ❸ The **gearbox is mounted to a heavy-duty bowl support**, which is continuously welded to the top and bottom decks. This design spreads the stresses and provides for a more reliable and durable gearbox.
- ❹ The **John Deere gearboxes** are backed by a five-year limited warranty*. (See dealer for details.) Blades and drive components are protected by a tough, self-adjusting slip clutch.
- ❺ This is the **MaxFlow cutting chamber**. It can slice and dice brush, plus lift dense grasses for a clean, even cut. The underside of the bottom deck is smooth, improving cutting performance and material flow.
- ❻ **Pan-type blade holder**, or “stump jumper,” protects the gearbox output shaft from stumps, rocks and other obstructions.



* Usage limitations may apply. See Warranty for new John Deere Agricultural Products at your local dealer for details. Applies only to new John Deere Rotary Cutters. Excludes Frontier-brand Rotary Cutters.





Get the right hitch and tires for your mowing challenges.

- ❶ The Heavy-Duty Cutters with the **3-point hitch** offer better maneuverability to mow around obstacles and back into corners. The RC10R and RC14R also give you a pull-type hitch option.
- ❷ The **pull-type hitch** works well in fields with long rows and few obstacles. Plus, pull-type models work with tractors with no 3-point or limited hitch lift capacity. (For example, the lift-type RC10R requires an 80 PTO horsepower[†] tractor, while the pull-type version requires just 50 PTO horsepower[†].)
- ❸ The **iMatch™ quick-hitch system** will speedup cutter hookup. Simply back up to the cutter and lift to connect the 3-point.

[†]Manufacturer's estimate of power (ISO) per 97/68/ED.





	RC6R	RC7R	RC10R	RC14R
Cutting width	6 ft. (1.8 m)	7 ft. (2.1 m)	10 ft. 6 in. (3.2 m)	13 ft. 9 in. (4.2 m)
Cutting height	Lift-type: 2 to 9 in. (51 to 229 mm)	Integral: 2 to 9 in. (51 to 229 mm)	1 to 12 in. (25 to 305 mm)	1 to 12 in. (25 to 305 mm)
Overall width	6 ft. 5 in. (2 m)	7 ft. 5 in. (2.3 m)	11 ft. (3.4 m)	14 ft. 3 in. (4.3 m)
Overall length	Lift-type: 8 ft. 11 in. (2.72 m)	Integral: 9 ft. 11 in. (3.02 m)	Lift-type: 9 ft. (2.74 m) Pull-type: 13 ft. 3 in. (4.03 m)	Lift-type: 9 ft. 9 in. (2.97 m) Pull-type: 13 ft. 3 in. (4.03 m)
Body depth	11.8 inches (300 mm)	11.8 inches (300 mm)	10.5 in. (267 mm)	10.5 in. (267 mm)
Deck thickness	0.26 in. (6.5 mm) Lower deck: 0.14 in. (3.5 mm) Upper deck: 0.12 in. (3.0 mm)	0.26 in. (6.5 mm) Lower deck: 0.14 in. (3.5 mm) Upper deck: 0.12 in. (3.0 mm)	0.28 in. (7 mm) Upper deck: 0.14 in. (3.5 mm) Lower deck: 0.14 in. (3.5 mm)	0.28 in. (7 mm) Upper deck: 0.14 in. (3.5 mm) Lower deck: 0.14 in. (3.5 mm)
Skirt thickness	0.24 in. (6 mm)	0.24 in. (6 mm)	0.24 in. (6 mm)	0.24 in. (6 mm)
Driveline protection	Tractor to center gearcase: slip clutch	Tractor to center gearcase: slip clutch	Tractor to center gearcase: slip clutch Center to outer gearcases: shock-absorbing shafts	Tractor to center gearcase: slip clutch Center to outer gearcases: shaft with shearbolts clutch
Gearcase power rating	540 rpm: 150 hp continuous (110 kW) 540 rpm: 205 hp peak (151 kW)	540 rpm: 150 hp continuous (110 kW) 540 rpm: 205 hp peak (151 kW)	540 rpm center (continuous): 109 hp (81 kW) 540 rpm center (peak): 138 hp (102 kW) 140 rpm outer (continuous): 84 hp (63 kW) 540 rpm outer (peak): 93 hp (69 kW)	1,000 rpm center (continuous): 113 hp (85 kW) 1,000 rpm center (peak): 199 hp (147 kW) 1,000 rpm outer (continuous): 84 hp (63 kW) 1,000 rpm outer (peak): 120 hp (88 kW)
Bladeholder	Round pan (stump jumper)	Round pan (stump jumper)	Round pan (stump jumper)	Round pan (stump jumper) or blade bar (double blade)
Blade (Standard)	Suction, 0.5x4 in. (12.7x102 mm)	Suction, 0.5x4 in. (12.7x102 mm)	Suction, 0.5x4 in. (12.7x102 mm)	Suction, 0.5x4 in. (12.7x102 mm) Dual, 0.5x4 in. (lower), 0.5x3 in. (upper)
Blade-tip speed	13,623 ft./min. (69.2 m/s)	540 rpm: 16,061 ft./min. (81.6 m/s)	540 rpm: 16,582 ft./min. (84 m/s)	1,000 rpm: 14,896 ft./min. (76 m/s)
Brush-cutting capacity	4 in. (102 mm) diameter	4 in. (102 mm) diameter	3 in. (76 mm) diameter	3 in. (76 mm) diameter
Hitch category	Lift-type: Cat. 2 or 3N	Lift-type: Cat. 2 or 3N	Lift-type: Cat. 2, 3, or 3N	Lift-type: Cat. 2, 3, or 3N
Minimum tractor PTO power	40 hp (30 kW)	45 hp (34 kW)	Lift-type: 80 hp (60 kW) Pull-type: 50 hp (37 kW) Semi-mount: 50 hp (37 kW)	Lift-type: 80 hp (67 kW) Pull-type: 60 hp (45 kW)
Weight (less attachments)	Lift-type: 1208 lb. (548 kg)	Lift-type: 1378 lb. (625 kg)	Lift-type: 2,049 lb. (929 kg) Pull-type: 2,321 lb. (1053 kg)	Lift-type: 3,005 lb. (1363 kg) Pull-type: 3,051 lb. (1384 kg)
Tires	Lift-type (4-bolt, laminated): 15.5x3.75 in. (381x95.26 mm)	Lift-type (4-bolt, laminated): 15.5x3.75 in. (381x95.26 mm)	Lift-type: (4-bolt, laminated): 15.5x5 in. (394x127 mm) Pull-type: (4-bolt, laminated): 21x5.25x9 in (533x133x229 mm) or 16PR severe-duty ag: 21x7x12 in. (533x178x305 mm)	Lift-type: (4-bolt, laminated): 21x5.25 in. (533x305 mm) or (16PR severe-duty ag): 21x7x12 in. (533x178x305 mm)

(Specifications and design subject to change without notice.)

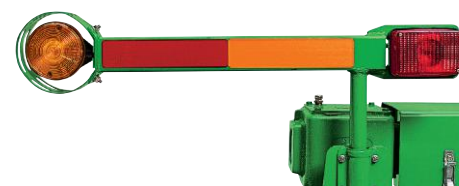


All Heavy-Duty Rotary Cutters are available with the durable laminate tire. The RC10R and RC14R pull-type models come with severe-duty ag tires for improved flotation on soft ground and smoother long-distance travel.

15.5x5 laminated (4-bolt): RC10R (lift-type)

21x7x12-16PR severe-duty ag tire (4-bolt): RC10R (pull-type), RC14R, RC15R, RC20R

21x5.25x9 laminated (4-bolt): RC10R (pull-type), RC14R, RC15R



RC14R optional left and right side lights help illuminate the tractor and cutter during road transport.

Financing for the future of your operation.

You have plans for the future. Your multi-use account helps you prepare with an easy way to pay at your John Deere dealer. Plus, you have access to flexible payment options including deferred financing*. Get the technology you need to grow, including reporting, consulting and more. Your dealer can help you plan for the future.

U.S.A.: www.JohnDeereFinancial.com | Canada: www.JohnDeereFinancial.ca

*Subject to John Deere Financial approval and dealer participation. See dealer for details. Program subject to change, without notice, at any time.



This literature has been compiled for worldwide circulation. While general information, pictures and descriptions are provided, some illustrations and text may include finance, insurance, product options and accessories NOT AVAILABLE in all regions. PLEASE CONTACT YOUR LOCAL DEALER FOR DETAILS. John Deere reserves the right to change specification, design and price of products described in this literature without notice. John Deere, the leaping deer symbol and John Deere's green and yellow trade dress are the trademarks of Deere & Company.



JOHN DEERE