

JOHN DEERE PRECISION UPGRADES

MODEL YEAR 2026



JOHN DEERE



Your Equipment, UPGRADED

PERFORMANCE AND PROFITABILITY

It's a simple equation: reducing input costs and increasing yield returns a higher profit to farmers' bottom lines.

Our Precision Upgrades provide farmers with a unique opportunity to adopt the latest technology without purchasing new or used equipment. This gives them a faster ROI, while boosting productivity and operational efficiencies.



04



YOUR PLANTER,
UPGRADED

17



YOUR AIR CART,
UPGRADED

18



YOUR SPRAYER,
UPGRADED

26



YOUR COMBINE,
UPGRADED

30



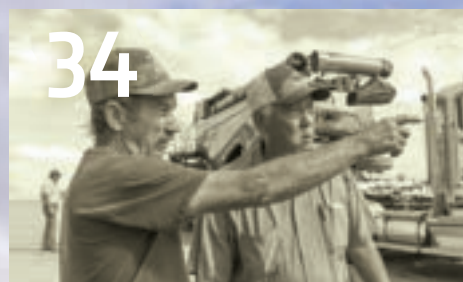
YOUR TRACTOR,
UPGRADED

32



SUREPOINT AG SYSTEMS

34



CUSTOMS, QUOTING & ORDERING

Please note: Product features are based on published information at the time of publication. Product features are subject to change without notice. Visit Deere.com or Deere.ca or contact your local John Deere dealer for more information.



Your Planter, UPGRADED

PRECISION UPGRADES



Learn more about planter upgrades from John Deere.

Boost your current planter's performance with Precision Upgrades from John Deere. They can help you make the most of your yield potential, inputs, and time in the field.



Ultimate Planter Upgrades

This complete solution includes new factory MaxEmerge™ 5e or ExactEmerge™ row units and replaces worn components, providing improved reliability in the field. Plus, you can customize your planter by adding optional features to meet specific needs.

- One-year factory warranty¹
- New serial number plate
- New decals to recognize your planter as an official member of the ExactEmerge or MaxEmerge 5e family
- Updates your planter electrical architecture to the latest SeedStar™ 5 monitoring system
- Enables compatibility for new planting technology like ExactShot™ and FurrowVision™

Available Optional Features

- Active pneumatic downforce
- Mechanical and pneumatic closing wheel systems
- Rubber, cast iron, or Yetter Twister® closing wheels
- Central Commodity System (CCS™) conversion kit
- Color-coded hydraulic grips
- And more...

Meter Upgrades

A flexible solution that can benefit any operation that wants to upgrade to MaxEmerge 5e or ExactEmerge electric-drive meters but doesn't need new iron with a full row unit upgrade, such as shanks, parallel arms, and gauge wheels.

Core Upgrades

These planter upgrades help you work smarter, not harder by boosting efficiency, reducing input costs, and arming the operator in the cab with tools to improve planting quality, which ultimately leads to better crop stands and yields.

- Individual Row Hydraulic Downforce
- ExactShot™ Liquid Fertilizer System
- ExactRate™ Liquid Fertilizer System
- FurrowVision™
- Frame Weight Distribution
- Ultimate LED Lighting Kit
- ExactChem™ Granular Insecticide

¹ John Deere Precision Upgrade Kits are sold as complete good from John Deere dealers. Precision Upgrade Kits come with a 1-Year factory warranty. Terms, conditions, exclusions, and warranty limitations apply. Contact your dealer for more information.



Electric Drive Upgrades

ExactEmerge Ultimate Planter Upgrade

Ships as a complete row-unit for faster installation time.

- Plant more than 100 additional acres per day with pinpoint population and spacing accuracy¹
- Gain over \$10 more per acre compared to a traditional planter²
- Maintain accurate seed placement at speeds up to 10 mph (16.1 km/h)
- Proven to deliver a 7% higher soybean survival rate on average compared to Precision Planting SpeedTube³
- Industry exclusive BrushBelt™ uniformly carries seed from the meter to the trench, reducing seed roll in the furrow
- Dual 56-volt electric motors provide infinite seed placement
- 20% improvement in population accuracy with curve compensation⁴
- Unlocks additional optional features like Easy Adjust row cleaners, Individual Row Hydraulic Downforce, and pneumatic closing wheels
- Exclusive upgrade: 1.6 bu or 2.7 bu hoppers available for non-CCS planters
- Requires tractor implement ethernet and a G5 Display



¹ Calculation assumes traditional planting technology productivity of 200 acres per day at 5 mph versus ExactEmerge productivity of 320 acres per day at 8 mph.

EXACTEMERGETM

UPGRADED

² Claim based on anonymized John Deere Operations Center(TM) data collected with grower consent from 2016 to 2024 across IA, IN, IL, SD, MN, WI, OH, MI, MO, ND and NE. Claim based on assumed commodity prices at \$10 per bushel of soybeans and \$4.20 per bushel of corn.

³ 2020 Iowa State University High Speed Planting Technology Study (<https://crops.extension.iastate.edu/cropnews/2020/03/high-speed-planting-technology>).

⁴ As compared to non-curve compensated planter John Deere internal study, Illinois.

MAXEMERGE 5ETM

UPGRADED

MaxEmerge 5e Ultimate Planter Upgrade

Ships as a complete row-unit for faster installation time.

- 20% improvement in population accuracy with curve compensation⁴
- 2-4% reduction in seed overlap with Individual Row Shutoff⁵
- Fewer mechanical parts compared to ExactEmerge
- Seed tube seed accuracy starts to diminish as field speed exceeds 5 mph in most conditions
- Unlocks additional optional features like Easy Adjust row cleaners, Individual Row Hydraulic Downforce, and pneumatic closing wheels
- Requires tractor implement ethernet and a G5 Display



Downforce

Individual Row Hydraulic Downforce

- Increase even plant emergence due to increased contact of the row unit to the ground
- Consistently place seed at desired depth regardless of soil conditions
- Closed loop downforce system reacts quickly on an individual row basis to changing soil conditions
- Adjusts up to five times per second
- 58% faster than pneumatic systems⁶
- Electric drive planters only

COMPATIBILITY:

- 1700/05, 1720/25 (CCS and non-CCS), 1750/55, 1770/75NT (Flex, CCS, and non-CCS), and 1790/95; model years 2005 and newer
- DB44 up to DB90, model years 2012 and newer

⁵ Calculation compares a 60-foot 24R MaxEmerge 5e planter versus a ground drive planter with mechanical shutoff half planter disconnect. Seed savings will vary depending on field shape and conditions.

⁶ Compared to pneumatic system. John Deere internal study, Illinois.

ExactEmerge™ Meter Upgrade

With a Meter Upgrade, you gain all the benefits of an ExactEmerge planter at a lower up-front cost, compared to buying a new planter or rebuilding your planter with an Ultimate Planter Upgrade. It's simple – keep your existing row units and we'll help you upgrade your metering system to ExactEmerge, so you can get in and out of the field quickly with pinpoint population and spacing accuracy.

COMPATIBILITY:

- 1700/05, 1720/25 (CCS and non-CCS), 1750/55, 1770/75NT (Flex, CCS, and non-CCS), and 1790/95; model years 2017 and newer
- DB44 up to DB90, model years 2017 and newer¹
- MaxEmerge 5e planters
- Pre-Assembled Meter and BrushBelt™ for faster installation
- Requires tractor implement ethernet and a G5 Display³



¹ Not compatible with 1705/1755/1775 Flex, model years 2017 to 2021.

² As compared to non-curve compensated planter John Deere internal study, Illinois.

³ 2022 to 2024 MaxEmerge 5e planters retain the original SeedStar 4 Monitoring System



MaxEmerge™ 5e Meter Upgrade

Meter Upgrades help you easily turn your existing mechanical drive planter into a MaxEmerge 5e electric drive planter. You'll say goodbye to time-consuming maintenance on chains, clutches, shafts, and bearings and hello to precise seed placement and input cost savings. You keep your existing shanks, and we'll help you upgrade your metering system.

- Planting speeds up to 5 mph (8.05 km/h)
- Row-by-row control to give you precise planting rates for each row, based on specific field conditions
- Individual row shutoffs to reduce seed waste by shutting off seed flow in areas where it's not needed
- Turn compensation that automatically adjusts seed metering on curved rows to achieve up to 20% population accuracy improvement²

COMPATIBILITY:

- MaxEmerge 5 Planters
- 1700/05, 1720/25 (CCS and non-CCS), 1750/1755, 1770/75NT (Flex, CCS, and non-CCS), and 1790/95; model years 2015 and newer
- DB44 up to DB90, model years 2015 and newer
- Updates planter to SeedStar™ 5 Monitoring System
- Compatible with many crops including corn, soybeans, cotton, peanuts, and small grains
- Requires tractor implement ethernet and a G5 Display

EXACTSHOT™



Fertilizer Upgrades

ExactShot

- Save up to 60% of in-furrow nutrient input¹
- Switch between Dosing and Continuous mode from cab
- Apply nutrients directly on seed where they are used most efficiently
- In-furrow option only
- Easy to setup, monitor, and change rates using G5 Display
- Option to convert an existing ExactRate system to ExactShot

¹ Based on internal tests of a prototype ExactShot system performed across 21 farms in six Midwestern states applying a 5.1-cm (2-in.) dose on seeds with 15.2-cm (6-in.) in-row seed spacing.



COMPATIBILITY:

- 1770/75NT CCS, 1790/95, DB44 to DB90 up to 36 rows
- 1725C model year 2023 and newer
- ExactEmerge only
- Must have or upgrade to SeedStar 5

Please see Ag Sales Manual for more details around compatibility requirements for ExactShot and ExactRate upgrades. Electric drive row units are required to operate ExactShot or ExactRate fertilizer upgrades. ExactShot is not compatible with planters using FurrowVision.

ExactRate

- Average of 4.3% (up to 12%) reduction in input (fertilizer)²
- Performance up to 16.1 km/h (10 mph)
- Variable rate prescriptions
- Turn compensation
- Row-by-row section control
- Flow detection
- As-applied documentation
- In-furrow or 2x2 application methods available

COMPATIBILITY:

- 1770/75NT CCS, 1790/95, and DB44 up to DB90; model years 2018 and newer

²Runge, Max, et al. "Automatic section control technology for row crop planters." Extension Alabama A&M & Auburn Universities ANR-2217, Oct. 2014. <https://www.aces.edu/blog/topics/crop-production/automatic-section-control-technology-for-row-crop-planters/>



In-furrow application



*Frame mounted fertilizer opener
(sold separately)*

ExactChem

- Granular electric-drive insecticide solution
- Compatible with electric meter systems
- Precise single-product rate control
- Dispensing at rates of 1.1 – 13.1 lb/acre
- Planting speeds of 1.2 – 10 mph
- Row-by-row section control
- Easy set-up and calibration via comfort of cab



COMPATIBILITY:

- 1775NT – 12R, 16R, and 24R/30
- 1720/1725C – 12R/30, 12R/36, 12R/38, 12R/40
- DB60 – 24R/30
- Not Compatible with ExactShot, FurrowVision, DB60 Tracks, or 2.7/3.0 bu hoppers

Requirement:

- SeedStar 4 or SeedStar 5 software
- Gen4 or Gen5 Display





Technology

FurrowVision

- Live camera feed into actual planter furrow, streamed on the the G5 display
- Validate seed depth accuracy across planter sections
- Adjust row cleaners and downforce based on observations without leaving cab

Requirements:

- Must have, or upgrade to, SeedStar 5 planter monitoring software
- G5 display and implement ethernet
- Not compatible on machines with ExactShot installed
- Not compatible with seed firmer or in-furrow press wheels
- Corn, soybean, crops only

COMPATIBLE PLANTER PUK MODELS:

- 1775NT, 12R30, 16R30, 24R30
- 1795, 23/24R15, and 31/32R15 (front rank only)
- DB44, 24R22
- DB60, 24R30, 36R20, 47/48R15 (front rank only)
- DB66, 36R22

Please see Ag Sales Manual for more details around compatibility and requirements for FurrowVision upgrades. Compatibility subject to change.

Precision Technology



In-Cab Touchscreen Displays

Manage guidance lines, application rates, input placement, and more; G5 Displays offer more screen space, faster processing, and 1080p HD quality¹.



StarFire™ 7500 Receiver

SF-RTK signal gives RTK accuracy without the need of a radio.



JDLink™ Connection

Streams machine and field data to your Operations Center account.



John Deere Operations Center™

- Single, secure place to setup, **plan**, monitor, analyze, and share your farm data – anytime or anywhere



Whether you're tilling, seeding, applying, or harvesting, Work Planner gives you everything you need to create exact work plans that detail variety, guidance lines, prescriptions, and more.

AutoPath™²

- Uses crop row data from your first pass to create accurate guidance lines for secondary passes such as planting, spraying, and harvest

John Deere Section Control

- Reduce overlap and minimize skips ensuring precise placement of crop protectants and nutrients

Mobile Row-Unit Runoff

- Setup and check rows from your mobile device
- Reduce chances of doubles and skips

SeedStar 5

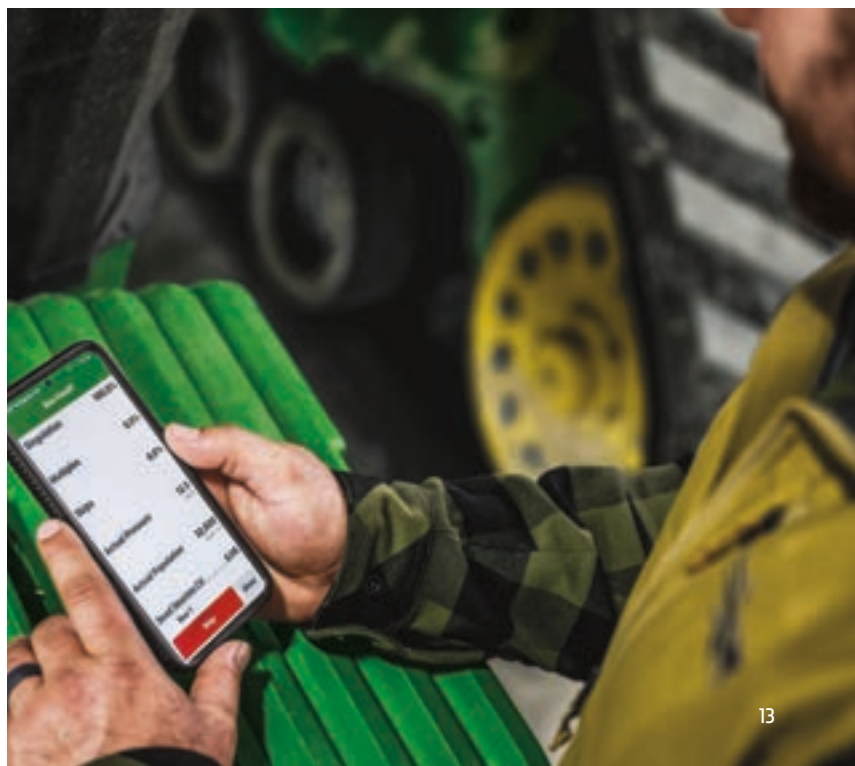
- The latest monitoring software for John Deere Planters. Paired with a G5 Display and Implement Ethernet to provide high-definition documentation, faster data speeds, and more information in the cab to help improve planting job quality

AutoTrac™ Turn Automation (ATTA)²

- Automatically complete accurate, hands-free, end-of pass turns

Implement Guidance²

- Increased pass-to-pass accuracy on curved passes and sloped terrain using a second StarFire receiver on your implement



¹ Compared to previous display.

² Available as part of the Automation 4.0 Package and G5 Advanced Package.

Compaction Management Upgrades

Frame Weight Distribution

- Redistributes weight to wings where it can be used to increase downforce on row units
- Reduces compaction in center section of CCS planters
- Factory-ready solution available for planters that chose the “less” option when ordering from factory
- Bolt-on solution available for planters that did not have a Frame Weight Distribution option when ordered from the factory

COMPATIBILITY:

- 1770/75NT, model years 2005 and newer
- Factory-ready 1775NT 24R30 kits for model year 2016 and newer planters; bolt-on solution for model years 2005-2015
- 1790/95, model years 2005 and newer
 - Kits only available for 31R15 and 32R15 models
- DB60, model years 2017 and newer; factory-ready kits



Ultimate LED Lighting Kit

- LED lights match the color temperature used in the lighting for Premium and Ultimate Visibility packages on John Deere tractors
- Lights mounted on the front hitch to fill the area between the tractor and planter with light, accommodating tractors that may not have enough lighting to fill this void
- In-tank mounting for full tank illumination for seed level monitoring

- Added illumination under the bar on each row-unit for better detection of obstacles, plugs, and more¹
- Added illumination to the ends of the planter bar for better visibility around the entire machine¹
- Robust rear lighting enables in-field planting quality audits and in-cab monitoring
- Improved visibility during row-unit service¹

COMPATIBILITY:

- 1770/75NT and 1795, model years 2005 and newer
- DB planters, model years 2012 and newer



Optional Features

Available when ordering an Electric Drive upgrade package

DOWNFORCE

Individual Row Hydraulic Downforce (IRHD)

- Increase even plant emergence due to increased contact of the row unit to the ground²
- Consistently place seed at desired depth regardless of soil conditions
- Closed loop downforce system reacts quickly on an individual row basis to changing soil conditions
- Adjusts up to five times per second
- 58% faster than pneumatic systems³
- Compatibility: Electric Drive Planters

Active Pneumatic Downforce

- Maintains margin set from display across sections of planter rows
- Uses air bags to increase/decrease pressure on sections of planter rows

¹ Compared to a planter without LED lights



CLOSING SYSTEMS

Pneumatic Closing Wheels

- Improve seed-to-soil contact for uniform emergence and better yield potential
- Adjust settings in seconds from the cab
- Operators are notified when closing pressure is not met, unlike spring systems

Mechanical Closing Wheels

- Manually set using handle on each row

² Doerge, T., Jeschke, M., and Carter, P. Planting outcome effects on corn yield. *Crop Insights*, Vol. 25, No. 1. DuPont Pioneer.

³ Compared to pneumatic system. John Deere internal study, Illinois.



CLOSING WHEELS

Rubber Closing Wheels

- Standard closing wheel from factory

Cast Iron Closing Wheels

- Heavier wheel for more aggressive soil contact

Yetter Twister® Closing Wheels

- Break up soil compaction
- Rounded center-ring design ensures consistent trench closure



CONVENIENCE

Color Coded Hydraulic Grips

- Easily connect planter hydraulics to proper tractor ports
- Aluminum handles with John Deere logo and extend/retract icons etched into metal



ROW TILLAGE

Easy-Adjust Row Cleaners

- Helps keep furrow free of debris
- Adjustable from display while planting
- Pneumatic up and down pressure
- Three presets for different field conditions

SEED DELIVERY

Central Commodity System (CCS) Conversion Kit

- 55 bu CCS tank
- Only available for 12- and 16-row 1720/25 non-CCS kits adding electric drive row-units

Hoppers

- 1.6 bu for ExactEmerge and MaxEmerge 5e upgrades
- 3.0 bu for MaxEmerge 5e upgrades
- 2.7 bu for ExactEmerge upgrades



Your Air Cart, **UPGRADED**

PRECISION UPGRADES



AccuRate Metering System Precision Upgrade

Seed up to 8x more accurately¹ with individually controlled AccuRate stainless steel electric meters. Made of 316-grade stainless steel, AccuRate meters provide better corrosion resistance than 304-grade stainless steel, lowering maintenance and repair costs.

- Start and stop each meter with SectionCommand™ Pro
- Accurately meter the correct amount of product on a curve with curve compensation
- Achieve long-term corrosion resistance with our anti-static composite primary tubes, which also help to minimize crop buildup. This helps provide consistent seed flow to your tools, driving accurate seeding rates
- Available with the industry-exclusive EZCal system that saves time and steps by sending calibration numbers automatically to the cab display

Your Precision Upgrade kit will contain all the components to fully upgrade your air cart, such as, meters, harnesses, controllers, electric power generation, air plumbing, G5e Cart Side display, and optional EZCal system.

COMPATIBILITY:

- C650 and C850 Air Carts, model years 2017-2024
- 1910 Air Carts, model years 2005-2024

¹ Based on seeding with an 8 primary run air cart and an 80-foot (24.4-meter) air seeder Prescription zones would improve from 80-foot zones to 10-foot (3-meter) zones.



EZCal™

EZCal is like pressing the easy button on your air cart calibration. With a push of the button on the side of the cart, EZCal automatically calculates and sends the MDV to the cab eliminating user error. This lets you calibrate 75% faster² than previous models and 45% faster³ than the leading competitor's calibration times.



² Based off internal testing of a current production bag calibration on a 1910 air cart taking 10 minutes to calibrate compared to a EZCal-equipped air cart taking 2 minutes and 15 seconds.

³ Based off internal testing of a Bourgault air cart calibration taking 4 minutes compared to a EZCal-equipped air cart taking 2 minutes and 15 seconds.

Your Sprayer, **UPGRADED**

PRECISION UPGRADES

See & Spray™ Select **NEW**

- A one-time purchase with unlimited usage for fallow acres
- See, target, and kill weeds using advanced cameras and machine learning
- Select targeted or broadcast applications
- An average 77% herbicide savings¹
- Reduce water usage and tender stops¹
- With purchase of an annual license, gain real-time variable rate capability off of detected green biomass, allowing you to spray product where it's needed most
- Delivers results at operating speeds up to 25.75 km/h (16mph) with approved nozzles

COMPATIBILITY:

- R4030 to R4060, 400 and 600 Series; model years 2018 and newer
- Boom length of 120 ft (36.6 m)
- Requires ExactApply™, Boom Trac Pro 2 with See & Spray™ compatible height sensors
- Requires a G5^{Plus} integrated display, a StarFire 6000 or newer receiver, and must have a SF3 signal or RTK
- Requires steel booms and stainless steel plumbing
- Model Year 2022 and newer machines require Pressure Recirculation
- Not compatible with Direct Injection



Learn more about sprayer upgrades from John Deere.

¹In tests over 75,000 acres of fallow ground, typical weed pressure of 3,000 weeds per acre, and with spray length settings of small medium, customers experienced an average herbicide savings of 77% compared to a traditional broadcast sprayer. Individual results may vary.



See & Spray Premium

- See, target, and kill in-season weeds using advanced cameras and machine learning
- Select targeted or broadcast applications
- Cut herbicide usage by more than 50%²
- Reduce water usage and tender stops³
- Reduce crop stress and improve yields³
- Delivers results at operating speeds up to 15 mph (24.1 km/h)⁴
- Compatible with pressure recirculation and product reclaim (model year 2022 and newer)

² Results based on internal John Deere strip trials in corn, and soybeans in Arkansas, Nebraska, and Texas, in typical growing conditions, with varying weed size, crop canopy, and field conditions, using targeted spray of non-residual herbicide only, and using current software/algorithm at time of trials. Results vary based on crop. Individual results will vary.

³ Internal comparison between John Deere sprayers equipped with See & Spray, and John Deere sprayers without See & Spray, based on field and growing conditions. Individual results may vary.

⁴ New for model year 2026. Premium machines can go 15 mph (24.1 km/h) during with the row applications. 15 mph (24.1 km/h) speeds not approved for ULM or ULD nozzles. Spray buffer length must be set to small for over 12 mph (19.3 km/h) speeds



COMPATIBILITY:

- R4030 to R4060, 400 and 600 Series; model years 2018 and newer
- Boom lengths of 90 ft (27.4 m), 100 ft (30.5 m), or 120 ft (36.6 m)
- Requires ExactApply, BoomTrac Pro 2 with See & Spray compatible height sensors
- Requires a G5^{Plus} integrated display, a StarFire 6000 or newer receiver, and must have a RTK correction source (SF- RTK or Radio RTK)
- Requires steel booms and stainless steel plumbing
- Not compatible with Direct Injection



ExactApply

- Premium Individual Nozzle Control: six (6) nozzle turret with multiple modes of operation maintains rate and pressure to reduce overapplication, crop burn, and off-target drift
- Cover up to 20 more acres per hour (based on a 2-mph increase in operating speed) with more consistent spray deposition
- Save 2-5% on herbicides and pesticides¹
- 15-Hz pulse-width modulation (PWM) pulses one solenoid for more consistent pressure and droplet size over a wider range of ground speeds and application rates
- 30-Hz PWM pulses both solenoids at 15 Hz for more thorough coverage during high-volume applications, like liquid fertilizer
- AutoSelect A/B mode automatically switches between two nozzles to maintain a constant spray pressure while you're spraying conventionally
- Turn compensation mode decreases the spray rate on the inside of a turn while increasing the rate on the outside, ensuring consistent application across the entire width of the boom
- ExactApply Multi-Rate enhances nozzle capabilities by enabling the delivery of multiple rates across the eleven sections of the boom in a single pass, regardless of the boom length²
- Compatible with pressure recirculation and product reclaim

COMPATIBILITY:

- R4030 and R4038, model years 2014-2021
- R4045 model years 2015-2021
- R4044 and R4060, model years 2019-2021
- 400 and 600 Series, model years 2022 and newer

¹ Internal comparison of sprayers equipped with Individual Nozzle Control to sprayers without turn compensation and with standard Section Control. Individual results will vary depending on field and operating conditions.

² Multi-Rate available on model year 2022 and newer sprayers equipped with See & Spray or that have a model year 2026 precision upgrade kit for ExactApply. Necessary harnessing for kits prior to model year 2026 without See & Spray is available through parts.



Individual Nozzle Control Pro

- Offers a step up from Section Control, allowing for more precise application
- Save 2-5% on herbicides and pesticides³
- Section size reduced to individual nozzle turrets, reducing overlap and overspray
- Turn compensation by individual nozzle
- 15-Hz single pulse-width modulation (PWM)
- Combination of proven existing standard flow hardware with increased capability matching what is shown for other nozzle control
- Compatible with pressure recirculation and product reclaim

³ Internal comparison of sprayers equipped with Individual Nozzle Control to sprayers without turn compensation and with standard Section Control. Individual results will vary depending on field and operating conditions.



COMPATIBILITY:

- R4030 to R4060, 400 and 600 Series; model years 2014 and newer
- 4730 and 4830 model years 2008-2014
- Boom lengths of 100 ft (30.5 m) and 120 ft (36.6 m)



Individual Nozzle Control Heavy Duty

- Designed for high-viscosity and suspended solid fertilizers and chemicals
- Allows accuracy of nozzle control down to the individual nozzle, helping reduce overlap and overspray, reducing overall chemical usage and overapplication
- Utilizes the John Deere five-position high-flow nozzle body
- Flow is controlled by a ball valve and powered open and closed by a small electric actuator on each nozzle
- Section width equivalent to the nozzle spacing when used with John Deere Section Control
- Compatible with pressure recirculation and product reclaim

COMPATIBILITY:

- R4030 to R4060, 400 and 600 Series with 120 ft (36.6 m) steel booms, model years 2018 and newer
- LS475 and LS20 Liquid Application System for F4365/800R with boom lengths of 90 ft (27.4 m); model years 2021 and newer

Pressure Recirculation and Product Reclaim

- Pressure recirculation pushes product through the sprayer booms with a three-way valve, keeping solution from settling and delivering a consistent product to every nozzle
- Product reclaim pushes air through the sprayer lines and moves the solution back into the center feed tank
- Save product with pressure recirculation – up to 30 gal (113.6 L) per boom prime post boom purge¹
- Save up to \$600 a day¹ with pressure recirculation 10 times a day, coupled with approximately 22.5 gal (85.2 L) of solution savings with product reclaim one to two times per day
- Reduce crop damage from residual chemical buildup
- No tank modifications are needed

No tank modifications are needed.



COMPATIBILITY:

- R4030, R4038, and R4045; model years 2018-2021
- R4044 and R4060; model years 2019-2021
- 400 and 600 Series; model years 2022 and newer

¹USD. Assumes 30 gal (113.6 L) of residual product in the system at 10 gal/acre (93.5 L/ha) and \$20 per acre 10 times per day. Individual results will vary based on application rates.





BoomTrac Pro 2

- Offers a 22% greater spray accuracy and 5x increase in the amount of time the boom maintains its target height (compared with the previous BoomTrac Pro system)
- Inertia-monitoring sensor helps correct chassis roll
- Helps ensure accuracy in product application and reduces drift, even in hilly or rough conditions
- Requires BoomTrac Pro System, if not already installed, in order to operate
- Precision Upgrade kits come See & Spray ready

COMPATIBILITY:

- R4030, R4038, and R4045; model years 2018-2021
- R4044 and R4060; model years 2019-2021
- 400 and 600 Series; model years 2022 and newer

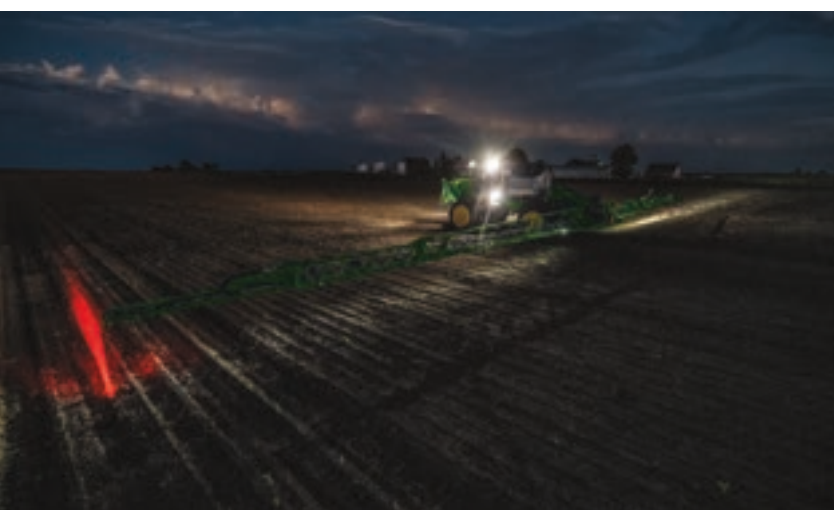


Boom Extensions

- Increasing boom length covers more ground in a single pass, helping improve acres covered per day
- Going from 90 ft (27.4 m) to 120 ft (36.6 m) booms could see an overall improvement of 135 acres accomplished in a day
- Boom extensions allow 90 ft (27.4 m) and 100 ft (30.5 m) existing booms to be upgraded to 120 ft (36.6 m) steel booms
- Kits include new inner, outer, and breakaway sections
- Both wings come from the factory assembled, helping reduce installation time

COMPATIBILITY:

- R4030/408R up to R4060/616R; model years 2014 and newer



LED Boom and Vehicle Lighting

- Help improve visibility around the machine and increase confidence when operating in less-than-ideal light situations
- **Vehicle work lighting package:**
 - 20 LED lights added to the hood, cab roof, boom cradles, left-hand platform, fill station, and right-hand fuel tank
- **Boom lighting package**
 - Tip edge light:**
 - Illuminates a line on the ground aligned with end of the boom
 - Installs on left-hand and right-hand boom tips
 - Compatible with 90 ft (27.4 m), 100 ft (30.5 m), or 120 ft (36.6 m) steel boom
 - Compatible with fence row nozzles and foamers
 - Spray pattern illumination lights:**
 - Located on inside of inner wings
 - Faces outward
 - Can be used with ExactApply spray pattern lighting

COMPATIBILITY:

- Vehicle lighting - R4030 up to R4060; model years 2014-2021
- Boom lighting - R4030/408R up to R4060/616R; model years 2014 and newer

Precision Technology

John Deere Operations Center

- Single, secure place to setup, plan, **monitor**, analyze, and share your farm data – anytime or anywhere



On the farm or away from it, Monitor features in Operations Center give you web and mobile tools to view field progress, work totals, and machine location.

Notifications give you 24/7 updates on your operation.



AutoPath

- Uses crop row data from your first pass to create accurate guidance lines ensuring your sprayer stays on track
- Saves time while minimizing crop damage

AutoTrac RowSense - Sprayer

- Paddle sensor mounted on front wheel
- For late, post-emerge applications
- Approved for 30-in to 40-in (76 cm-101.6 cm) corn
- For all 4 Series Sprayers



John Deere Mobile Weather

Confidently apply crop protectants according to label requirements by knowing the current weather conditions including wind speed, wind direction, and humidity

- Improve recordkeeping and compliance reporting by documenting weather conditions during application

AutoTrac Vision

Decrease crop damage, reduce operator fatigue, and operate at higher speeds compared to manual driving by enabling the equipment to follow the actual planted crop row



In-Cab Touchscreen Displays

Manage guidance lines, application rates, input placement, and more; G5 Displays offer more screen space, faster processing, and 1080p HD quality



StarFire 7500 Receiver

SF-RTK signal gives RTK accuracy without the need of a radio



JDLink Connection

Streams machine and field data to your Operations Center account

Your Combine, **UPGRADED**

PRECISION UPGRADES



Learn more about combine upgrades from John Deere.

Unlock the full potential of existing equipment with Precision Upgrades, available for X9, S7, S700, and S600 Combines.

Cross Auger Shut Off

- Cross augers engage after unloading auger has engaged reducing overall system load
- Cross augers disengage prior to unloading auger to allow unloading auger to empty
- Reduces grain weight in the unloading auger
- Improves auger start up and decreases wear and tear

COMPATIBILITY:

- S760, S770, S780, and S790; model years 2018 - 2024
- S7 600, S7 700, S7 800, S7 900; model years 2025 and newer



Adjustable Auger Spout

- Prevents grain dribbling in the field and during transport
- Spout adjustment is controlled from the multifunction lever and is easily programmable to multiple presets
- Easier to unload into grain cart or trailer
- Fully integrated into John Deere controls and displays



Field Transport Position



Road Transport Position

COMPATIBILITY:

- S760, S770, S780, and S790; model years 2018 - 2024
- S7 600, S7 700, S7 800, S7 900; model years 2025 and newer



Auto Unload **NEW**

Upgrade your combine with Auto Unload, the latest enhancement to John Deere's Machine Sync technology. By adding a stereo camera and controller, Auto Unload brings next-level automation to your harvest operation.

- Focus on other harvesting tasks and worry less about the location of the grain cart
- Hands-free forward and backward grain cart movement during the unloading process allows you to automatically achieve an evenly distributed grain cart load every time
- Top-off mode ensures the grain cart is filled consistently and efficiently, maximizing grain cart capacity
- Operator must manually start and stop the unloading process
- Machine Sync licenses and high-connectivity antennas are required on the combine and tractor

COMPATIBILITY:

- S700 and S7 Series, model years 2020 and newer
- X9 1000 and X9 1100, model years 2021 and newer
- Auger lengths of 26 ft (7.9 m) or greater
- Not compatible with unloading auger extensions

LED Light Kit

- The kit provides improved sight in low-visibility conditions
- Outer cab work lights, rear discharge lights, and unloading auger light are brighter than standard LED lights for better visibility
- Updated row finder light that can be pointed directionally where the operator wants it to shine

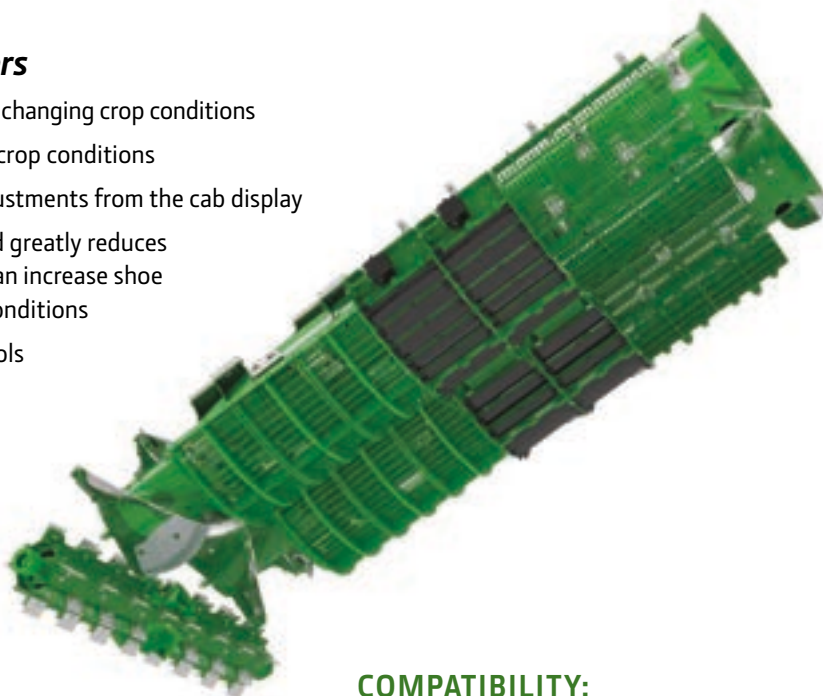
COMPATIBILITY:

- S660, S670, S680, and S690; model years 2012-2017
- S760, S770, S780, and S790; model years 2018 - 2024



Remote Separator Grate Covers

- Open or close covers from the cab with changing crop conditions
- Maximize ability to harvest in varying crop conditions
- Increased ability to make combine adjustments from the cab display
- Increases overall combine capacity and greatly reduces chaff load to the cleaning shoe; this can increase shoe capacity and reduce shoe loss in dry conditions
- Fully integrated into John Deere controls and displays

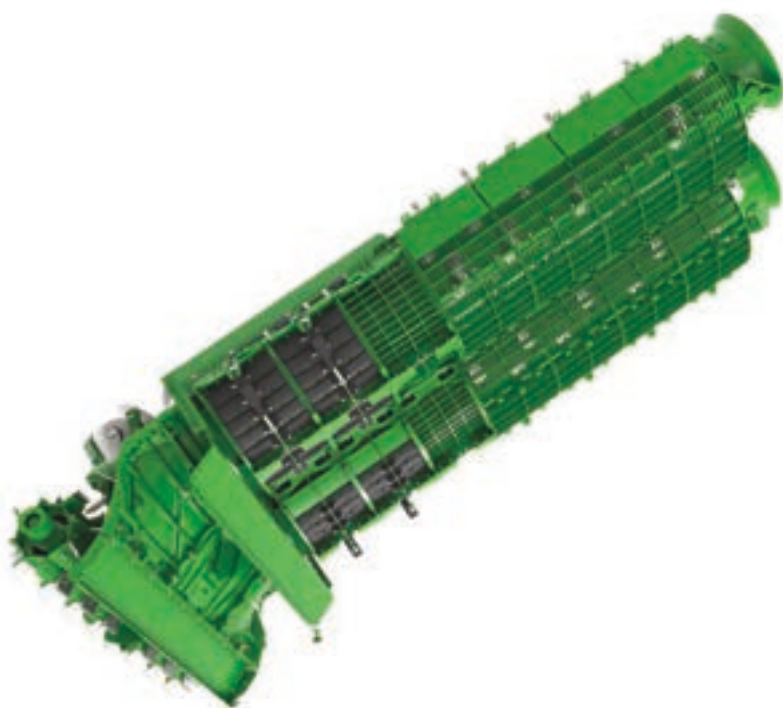


COMPATIBILITY:

- X9 1000 and X9 1100; model years 2021 and newer

Concaves with Remote Concave Covers

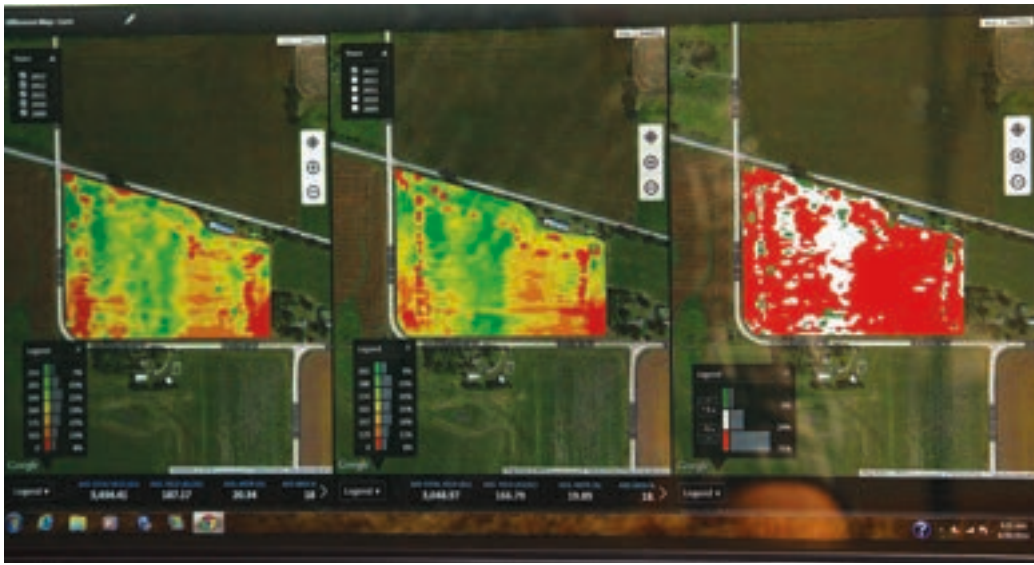
- Easy to handle and change concaves with a drop-down cradle design
- Added threshing area with the ability to mix and match concave designs
- Improve the natural threshing action
- Maximize the ability to harvest in varying crop conditions
- Open or close the covers from the cab, significantly increasing ease of use and optimization of your combine as conditions change
- No need to stop to install or remove manual covers
- Eliminates handling and storing manual covers as separate parts
- Fully integrated into the John Deere controls and displays



COMPATIBILITY:

- X9 1000 and X9 1100; model years 2021 and newer

Precision Technology



John Deere Operations Center

- Single, secure place to setup, plan, monitor, **analyze**, and share your farm data – anytime or anywhere



By collecting field and machine data, you can Analyze performance metrics so you know how you did this season... and how you can plan for the next. With just a few clicks, you can wirelessly share data with trusted advisors and partners, and create detailed reports for accurate record keeping.

Machine Sync License¹

- Automates unloading on-the-go in order to reduce machine-to-machine interactions and allow operators to focus on operation
- Increase efficiency by showing multiple machines in the field at the same time
- Share coverage map and guidance lines for increased efficiency and complete field coverage when two machines are working in the same field



AutoPath¹

- Uses crop row data from your first pass to create accurate guidance lines for a more accurate harvest track
- Saves time while minimizing grain loss

¹ Available as part of the Automation 4.0 Package and G5 Advanced Package.

² Compared to previous model.

³ JDLink hardware comes standard with the machine. You can turn on JDLink connected service in your John Deere Operations Center account for free. JDLink requires a cellular connection to transfer information from machine to Operations Center. Consult your John Deere Dealer for coverage availability.

AutoTrac RowSense

- Cover more acres per day with less stress by extending AutoTrac into post emerge in-field operations such as spraying and harvest
- Protect crop yield when applying crop protectants and nutrients in stand crop by making sure that the sprayer or tractor stays off the crop rows
- Focus on quality of the job being performed and ensure that the machine is operating as it should rather than being concerned about steering the machine in standing crop

PRECISION ESSENTIALS



In-Cab Touchscreen Displays

Manage guidance lines, application rates, input placement, and more; G5 Displays offer more screen space, faster processing, and 1080p HD quality²



StarFire 7500 Receiver

SF-RTK signal gives RTK accuracy without the need of a radio



JDLink Connection

Streams machine and field data to your Operations Center account³

Your Tractor, *UPGRADED*

PRECISION UPGRADES



Learn more about tractor upgrades from John Deere.

John Deere Autonomy **NEW**

Equip your tractor with the world's first autonomous tillage solution. Precision Upgrades now offers a kit that allows you to step out of the tractor and let it do the work for you, giving back your time, your farm, and your labor.

- Redirect labor to more critical tasks while your tractor does the tillage
- Maximize short operating windows by extending working hours without working longer yourself
- Do more work with existing resources
- Monitor your machine's work anytime, anywhere from Operations Center Mobile

TRACTORS COMPATIBLE WITH AUTONOMY:

- Model year 2020.5 and newer 8R/8RX Tractors
- Model year 2022 and newer 9R/9RX Tractors

TILLAGE TOOLS COMPATIBLE WITH AUTONOMY:

- Model year 2017 and newer 2230FH, 44.5 - 60.5 ft (13.5 - 18.4 m)
- Model year 2019 and newer 2430CP, 21 - 40 ft (6.4 - 12.2 m)
- Model year 2019 and newer 2660VT, 25.4 - 49.6 ft (7.5 - 15.1 m)
- Model year 2023 and newer 2680H, 25 - 45 ft (7.6 - 13.7 m)

Rear Implement Ethernet

- Enables high bandwidth communication between the tractor and implement
- With an increase to 1 GB/s of CAN speed (previously 250 kb/s), tractors and implements can communicate high- definition data faster, resulting in better decision-making for customers and dealers
- Rear Implement Ethernet is required for SeedStar 5 and future precision; a building block to John Deere's autonomous solution
- Ethernet switch, connector in cab, connector on back of tractor, brackets, harnessing is included
- Current implement offerings requiring ethernet: implements with high data flow requirements (electric drive planters)

Updated Compatibility for Rear Implement Ethernet:

- 7R: model year 2011 and newer
- 8R and 8RT model year 2011 and newer
- 8RX model year 2020.5 and newer
- 9R and 9RT model years 2012 and newer
- 9RX model year 2016 and newer

Precision Technology

Advanced License w/SF-RTK

Includes a one-year Essentials License in addition to the G5 Advanced License consisting of AutoTrac Implement Guidance (Passive), AutoTrac Turn Automation, AutoPath, In-Field Data Sharing, Machine Sync, and SF-RTK.

- AutoPath lets you use data from planting – or strip till and planting – to automatically create full-field guidance lines for secondary passes
- Let AutoTrac Turn Automation take over your turns, implement functions, and speed
- Reduce harvest chaos through combine and grain cart controls with Machine Sync
- AutoTrac Implement Guidance places your tool exactly where it needs to be, even on sidehills and around curves

- In-Field Data Sharing increases the efficiency of your field operations by monitoring the operations of up to six tractors, sprayers, nutrient applicators, or combines on one screen





In-Cab Touchscreen Displays

Create A-B lines. Manage application rates. Improve input placement. No matter which John Deere display you choose, you can easily improve the operating experience for older John Deere tractors and mixed fleets.

Choose from the G5 or the larger G5^{Plus} Display, which gives you 35% more screen space to add additional maps and widgets and 3x faster processing¹.



StarFire 7500 Receivers With SF-RTK

The StarFire 7500 – now with SF-RTK – delivers next-generation performance and dependability. A multi-constellation satellite signal reduces time needed to achieve full signal accuracy. Season-to-season repeatability minimizes guidance line, coverage, and boundary drift year after year.

- SF-RTK signal offers accuracy within 2.5 cm
- Up to 73% faster pull-in times compared to previous SF3 model
- Guaranteed 5-year+ repeatability, season to season
- Drop-in replacement for StarFire™ 6000 integrated or universal

John Deere Operations Center

Unlock the full power of your farm data. Operations Center seamlessly connects data from your fields, your machines, and your operators and advisors. Simplified farm data management from one location allows you to **setup**, plan, monitor, analyze and share for better operation decisions.

- Review your season-to-season yield success and machine performance, so you can make changes to increase profitability
- Easily share data with trusted advisors to help you make data-driven decisions
- Experienced dealers available for setup and support; allow you to focus on your job
- Maintain complete control; you decide if your data is shared or removed at anytime



Setup helps you sync your in-cab displays with your Operations Center dashboard. Improve management of your fields and equipment.

Save time by reducing in-cab decisions and improve in-field work accuracy.

² JDLink hardware comes standard with the machine. You can turn on JDLink connected service in your John Deere Operations Center account for free. JDLink requires a cellular connection to transfer information from machine to Operations Center. Consult your John Deere Dealer for coverage availability.

¹ Compared to previous model

SUREPOINT™ AG SYSTEMS

SurePoint Ag Systems was founded in 2007 to help producers become more efficient by applying the right product, in the right place, at the right rate. SurePoint products work with many brands of implements and integrate with most existing technology. Whether John Deere, CaseIH, AgLeader®, Trimble®, Raven, they offer a wide range of compatibility options.

SurePoint Ag Systems operates as an independent business and each John Deere dealer has access to sell SurePoint products.

PLANTING & SEEDING TECHNOLOGY

Upgrade your planter with advanced, ISOBUS-controlled systems that seamlessly integrate with your existing equipment. From seed metering to row unit control, row cleaning, and closing wheels, we deliver smarter solutions to optimize every pass in the field.

MVX™
Electric Seed Meter

GFX™
Hydraulic Row Cleaners

RFX™
Row Unit Suspension

FERTILIZER APPLICATION SYSTEMS

SurePoint starts by understanding your variables and then delivers custom-configured application systems for all types of farm equipment. Not all fertilizers are created equal. Their team of experts has developed the highest level of expertise, bringing together the right components to successfully achieve your application needs. They have a range of solutions from simple and basic, to some of the most advanced systems providing individual rate control of each row.

SENTINEL
LIQUID ROW MONITOR

LIQUISHIFT™
GEMS
Variable Rate Technology

THE ACCELERATOR
HYDRAULIC DRIVE SYSTEM

THE TOWER
110 V ELECTRIC PUMP

PUMPRIGHT
HYDRAULIC DRIVE DIAPHRAGM PUMPS

SPARTAN
DIRECT INJECTION

SPRAY TENDER SYSTEM

QuickDraw® Is a fully automated sprayer tender system. Start by creating a recipe that is saved and used every time you load that mix of chemicals. Enter the application rate/acre you will be spraying and the size of load you need, either in total gallons or total acres to spray. QuickDraw calculates the correct amount of each chemical in the batch and automatically measures and loads each chemical as well as the correct amount of carrier and stops the pump when the batch is complete.

The QuickDraw Swing Down Eductor allows operators to work on ground level. Add manually measured products including dry AMS through the Swing Down Eductor. Also available with ChemBlade, for splitting, dumping, and rinsing jugs.

QuickDraw
SPRAY TENDER SYSTEM

CHEM-BLADE

Ag Leader® is a registered trademarks of Ag Leader Technology Incorporated.

Case IH is a registered trademark of CNH Industrial America LLC.

Trimble is a trademark of Trimble Navigation Limited, registered in the United States and in other countries.



ANHYDROUS APPLICATION SYSTEMS

The Sentinel™ NH3 system allows in-cab monitoring of anhydrous to every row of the applicator.

The Torpedo™ Cooler is the central piece of the SurePoint Anhydrous Ammonia application system. It is a high capacity, extremely accurate, efficient heat exchanger. Couple the cooler with all plumbing and distribution components to get anhydrous from the tank to the shank.



Products Complementary to Deere:

- Dual Liquid Product on Planters
- QuickDraw for easy and accurate See & Spray™ tendering
- Precise NH3 Control and Monitoring with Torpedo and Sentinel NH3

ADDITIONAL OFFERINGS

Two Sentinel Controller Options

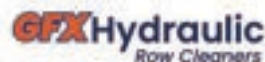
1000 Model

- Single Product Functionality
- Utilizes SurePoint Ag's Level 1 ECU
- Pair Up to 3 ECU's for Multiple Functions

2000 Model

- 4 Product Functionality
- Utilizes SurePoint Ag's Level 2 ECU
- Can Be Fully Customized to Your Operation

- **ISOBUS Control** : New in 2024: GFX controlled via cab display with Reflex ISOBUS platform.
- **Frame Mounted** : Toolbar mounting isolates row cleaner movements from the row unit allowing for more consistent seed placement.



CUSTOM PRECISION UPGRADES

Custom Precision Upgrades are an option to explore when a standard offering is not available. A team of engineers will work with you on your request to evaluate if your specific needs can be met with a Custom Precision Upgrade.

Reasons to submit a custom request may include, but are not limited to:

- 1) No standard kit offering for the model year of equipment to be upgraded*
- 2) Equipment modifications bring uncertainty around compatibility*
- 3) Non-supported configurations that limit compatibility, such as unique row counts or spacing, or utilization of Hydraulic Planter Power Generator for ExactEmerge*

The customs team works toward the goal of evaluating the request, and if possible, providing a quote back within a week. We want this process to be as seamless as possible and are confident there are product offerings that we can customize for your needs.



CHECK YOUR COMPATIBILITY



View Recommended
Upgrades Compatible
with **Your Planter**

Serial Number

Serial Number

or

Model

Select

Year

Select



Find the precision upgrade that's right for you with our
Precision Upgrade compatibility tool.

Input the serial number or model number and year of your
current planter to see what upgrades are available.

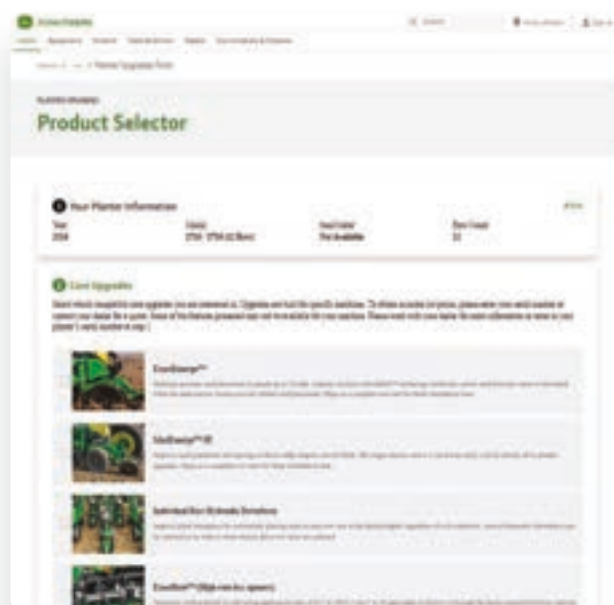
Available for planter and sprayer upgrades.



For Precision Upgrades compatible
to your planter, scan this QR code or visit
JohnDeere.com and JohnDeere.ca/PlanterUpgrades



For Precision Upgrades compatible
to your sprayer, scan this QR code or visit
JohnDeere.com and JohnDeere.ca/SprayerUpgrades





John Deere Precision Upgrade Kits are sold as complete good from John Deere dealers. Precision Upgrade Kits come with a 1-Year factory warranty. Terms, conditions, exclusions, and warranty limitations apply. Contact your dealer for more information.

For more information about available Precision Upgrades visit JohnDeere.com or JohnDeere.ca:



JOHN DEERE