

JOHN DEERE PRECISION UPGRADES

MODEL YEAR 2027



JOHN DEERE



Your Equipment, UPGRADED

PERFORMANCE AND PROFITABILITY

It's a simple equation: reducing input costs and increasing yield returns a higher profit to farmers' bottom lines.

John Deere Precision Upgrades provide unique opportunities to add advanced precision and automation technologies to machines you already own. This delivers a faster ROI while boosting productivity and operational efficiencies.



06



YOUR PLANTER,
UPGRADED

18



YOUR AIR CART,
UPGRADED

26



YOUR COMBINE,
UPGRADED

20



YOUR SPRAYER,
UPGRADED

30



YOUR TRACTOR,
UPGRADED

32



SUREPOINT AG SYSTEMS

34



CUSTOMS, QUOTING & ORDERING

Please note: Product features are based on published information at the time of publication. Product features are subject to change without notice. Visit Deere.com or Deere.ca or contact your local John Deere dealer for more information.

Your Operation, **UPGRADED**

PRECISION ESSENTIALS

Choose Your Precision Essentials Equipment

Pass by pass. Row by row. Seed by seed. Precision Technology is helping farmers get more out of less, from precise seed placement to valuable input savings. If you're looking to get more precise, we're making it easier than ever, with special pricing on bundled precision essentials. Core equipment that gives you the option to choose the precision tools you need, when you need them.



10" (25.4 cm) G5 or 12.8" (32.51 cm) G5^{Plus} Display

Create A-B lines. Manage application rates. Improve input placement.



StarFire™ 7500 Receiver

Achieve repeatable, +/- 2.5 cm accuracy for long-term precision in every operation.



JDLink™ M or R Modem¹

Connect your machines and wirelessly transfer field data to John Deere Operations Center™.

Add JDLink Boost to maintain connectivity even under heavy canopies or in remote locations with little to no cell coverage.

NEW Add more connectivity and automation to your Essentials!

Precision Essentials + JDLink Boost

Includes the Essentials above PLUS JDLink Boost to ensure connectivity even in areas with limited or no cellular coverage.

Precision Essentials + AutoTrac™ Universal 300

Includes the Essentials above, PLUS an AutoTrac steering system to give you automated guidance that you can transfer between machines.

Choose Your Precision Essentials License

These advanced tools will help you gain more precision, more automation, and more productivity. Choose the one that's right for your operation.

AutoTrac™	Essentials	Essentials + SF-RTK	Advanced	NEW Orchard Essentials
<ul style="list-style-type: none"> • AutoTrac™ <p><i>2-year license with initial purchase.</i> <i>Optional 1-year license thereafter.</i></p>	<ul style="list-style-type: none"> • AutoTrac • Section Control • RowSense™ <p><i>1-year license required.</i></p>	<ul style="list-style-type: none"> • AutoTrac • Section Control • RowSense • SF-RTK <p><i>1-year license required.</i></p>	<ul style="list-style-type: none"> • AutoTrac Implement Guidance • AutoTrac Turn Automation • AutoPath™ • In-Field Data Sharing • Machine Sync • Satellite Maps • Grain Harvest Weight Sharing • SF-RTK <p><i>1-year license required.</i></p>	<ul style="list-style-type: none"> • Section Control • In-Field Data Sharing • Satellite Maps • Orchard Mode

¹JDLink hardware comes standard with the machine. You can turn on JDLink connected service in your John Deere Operations Center™ account for free. JDLink requires a cellular connection to transfer information from machine to Operations Center. Consult your John Deere Dealer for coverage availability.

²Available as part of the Automation 4.0 Package and G5 Advanced Package.

Precision Essentials Opens Your Pathway to Advanced Guidance & Automation Ag Technologies



AutoPath²

Uses crop row data from your first pass to create accurate guidance lines for secondary passes such as planting, spraying, and harvest.



AutoTrac Turn Automation (ATTA)²

Automatically complete accurate, hands-free, end-of pass turns to increase accuracy while reducing stress.



Implement Guidance²

Gain increased pass-to-pass accuracy on curved passes and sloped terrain using a second StarFire receiver on your implement.



AutoTrac Vision

Decrease crop damage, reduce operator stress, and operate at higher speeds compared to manual driving by enabling the equipment to follow the actual planted crop row.



AutoTrac RowSense

Cover more acres per day with less stress by extending AutoTrac into post emerge in-field operations such as spraying and harvesting. And protect crop yield when applying crop protectants and nutrients in stand crop by making sure that the sprayer or tractor stays off the crop rows.



Machine Sync

Automate unloading on-the-go in order to reduce machine-to-machine interactions and allow operators to focus on operation. Machine Sync increases efficiency by showing multiple machines in the field at the same time and sharing coverage maps and guidance lines for increased efficiency.



John Deere Operations Center™ is your single, secure place to setup, plan, monitor, analyze, and share your farm data – almost anytime or anywhere. By collecting field and machine data, you can analyze performance metrics so you know how you did this season . . . and how you can plan for the next. With just a few clicks, you can wirelessly share data with trusted advisors and partners and create detailed reports for accurate record keeping.

Your Planter, UPGRADED

PRECISION UPGRADES

Planting season comes with real challenges – narrow and unpredictable windows, the pressure to achieve uniform stands, and rising input costs. Precision Upgrades from John Deere are designed to help you tackle all of it, so you can make the most of your yield potential, inputs, and time in the field.







1

2

3

5

9

10

6

7

8

4

PLANTER UPGRADE KITS

These planter upgrades help you work smarter, not harder by boosting efficiency, reducing input costs, and arming the operator in the cab with tools to improve planting quality, which ultimately leads to better crop stands and yields.

See what your planter could be.
Scan here.



1

Ultimate LED Lighting

Extend working days into night by providing improved visibility beyond the ends of the planter to better detect obstacles, plugs, and more.



2

Ultimate Planter Upgrade

Boost your planter's productivity and reliability with new ExactEmerge™ or MaxEmerge™ 5e factory built row units and replace wear parts like gauge wheels, parallel arms, and closing wheels.



3

Meter Upgrades

Find flexible solutions that work with your existing iron — no new shanks, parallel arms, or gauge wheels required.



4

Easy Adjust Row Cleaners

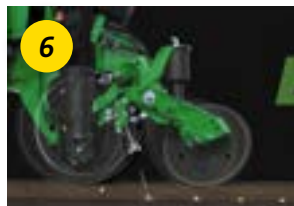
Make on-the-go adjustments from the cab with the push of a button for wet areas, waterways, or end rows.



5

Individual Row Hydraulic Downforce (IRHD)

Obtain peak planting performance at high speeds with 5 times per second adjustments to ensure consistent planting depth and optimal seed-to-soil contact.



6

ExactShot™

Promote early root development and save on fertilizer cost by delivering a dose of starter fertilizer to the seed and surrounding area compared to a steady consistent flow in the row.



7

FurrowVision™

Measure seed depth and view the planting trench with FurrowVision. Save time and keep running when you can verify accurate planting depth right from the seat of your cab.



8

ExactRate™ Liquid Fertilizer System

Offered in 2x2 or in-furrow configuration, ExactRate applies nutrients at the time of planting with individual row shutoff and curve compensation.



9

Pneumatic Closing Wheels

Improve seed-to-soil contact for uniform emergence and better yield potential by adjusting the closing wheels in just seconds and providing consistent closing in rough field conditions.



10

Yetter Twister Closing Wheels

Optional closing wheels ensure consistent trench closure by breaking up the side wall with the center ring design of Yetter twister closing wheels.



ExactChem™

ExactChem is an integrated granular insecticide upgrade designed specifically for John Deere electric drive planters. It gives you more flexibility, more accuracy, and more time savings.



Frame Weight Distribution

Reduce compaction in the center section of CCS planters by redistributing weights to the wings to increase downforce on each row unit.

ELECTRIC DRIVE PLANTING TECHNOLOGY

The right metering system is the foundation of every productive planting season. John Deere offers two electric drive options — ExactEmerge™ and MaxEmerge™ 5e — each engineered to deliver better accuracy, fewer input losses, and more confidence in the cab.

Both the Ultimate Planter Upgrade and Meter Upgrade kits include SeedStar™ 5 for most configurations¹. Monitor seed population, singulation, spacing, and ride quality in real time on the G5 Display. SeedStar 5 connects your planter to the full John Deere Precision Technology ecosystem, including AutoPath, AutoTrac Turn Automation, and Operations Center. Spend less time setting up and more time planting.

ExactEmerge™

Built for speed without sacrifice. Dual 56v electric motors on every row power BrushBelt™ seed delivery for precise seed placement and a picket fence stand — reducing bounce and roll for uniform emergence. A high-performance vacuum meter improves singulation, while individual row shutoff saves up to 2-4% on inputs⁴. The result: up to 20% better population accuracy², up to 7% higher soybean survival³, and the ability to plant accurately at speeds up to 10 mph (16.09 km/h).

MaxEmerge™ 5e

Versatile, reliable, and maintenance-free. Single 56v electric motors on every row drive seed tube delivery across more than 17 compatible crops — maintaining population accuracy around curves and through variable rate planting at speeds up to 5 mph (8.05 km/h). With up to 20% better population accuracy², individual row shutoff that saves up to 2-4% on inputs⁴, and a maintenance-free design with no chains or sprockets, MaxEmerge™ 5e delivers 1-2% yield potential improvement⁵ with less downtime.

ExactEmerge™ Ultimate Planter Upgrade



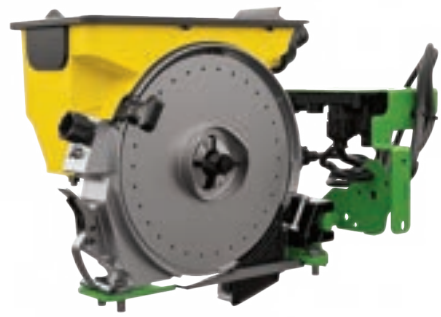
MaxEmerge™ 5e Ultimate Planter Upgrade



ExactEmerge™ Ultimate Meter Upgrade



MaxEmerge™ 5e Ultimate Meter Upgrade



UPGRADE KITS

Already own a John Deere planter? You can update your existing equipment. Choose from two options to best fit you and your operation.

Ultimate Planter Upgrade

Best for: Farmers with older planters (model year 2005+) who want like-new performance without buying new.

The Ultimate Planter Upgrade replaces worn row-unit components with new, factory-built row units—delivering like-new performance, restored reliability, and the latest planting technology on your existing planter bar, at a lower cost than purchasing a new ExactEmerge™ or MaxEmerge™ 5e planter. Each upgrade includes a new shank, parallel arms, metering system, downforce system and SeedStar 5 monitoring system.

CUSTOMIZABLE ADD-ONS:

- Individual Row Hydraulic Downforce or Active Pneumatic Downforce
- ExactRate™ or ExactShot™ liquid fertilizer system
- ExactChem™ granular insecticide
- Easy Adjust pneumatic row cleaners
- Pneumatic closing wheels
- Ultimate LED lighting
- FurrowVision™

COMPATIBILITY:

- 1700/05, 1720/25 (CCS and non-CCS), 1750/55, 1770/75NT (Flex, CCS, and non-CCS), and 1790/95; model years 2005 and newer
- DB44 up to DB90, model years 2012 and newer

Meter Upgrade

Best for: Farmers with newer planters (model year 2015+) whose row units and wear parts are still in good condition, and who want to improve planting accuracy at the lowest upfront cost.

Keep your existing row units and upgrade only your metering system to factory-standard ExactEmerge™ or MaxEmerge™ 5e. A targeted, lower-cost path that modernizes your planter with SeedStar™ 5¹ and reconnects you to the full suite of John Deere Precision Technology – with less clutter in the cab. No need for new shanks, parallel arms, or gauge wheels. Available upgrade paths:

START >>	UPGRADE TO	Benefit
MaxEmerge 5 <i>Mechanical or Hydraulic</i>	MaxEmerge™ 5e	Saves on inputs, reduces maintenance, increases accuracy
MaxEmerge 5 <i>Mechanical or Hydraulic</i>	ExactEmerge™	Saves on inputs, reduces maintenance, increases productivity and accuracy
MaxEmerge™ 5e <i>Electric</i>	ExactEmerge™¹	Saves on inputs, reduces maintenance, increases productivity and accuracy

COMPATIBILITY:

- 1700/05, 1720/25 (CCS and non-CCS), 1750/1755, 1770/75NT (Flex, CCS, and non-CCS), and 1790/95; model years 2015 and newer
- DB44 up to DB90, model years 2015 and newer

Crop Compatibility Chart

The following chart shows crop compatibility for John Deere Planters

	Corn	Soybeans	Cotton	Edible Beans	Popcorn	Sorghum (milo)	Sugar Beet	Sunflower	Sweet Corn	Canola	Cucumber	Melons	Peanuts	Peas	Pumpkin	Squash	Wheat
MaxEmerge™ 5e	✓	✓	✓	✓	✓	✓	✓	✓	✓	✓	✓	✓	✓	✓	✓	✓	✓
ExactEmerge™	✓	✓	✓	✓	✓	✓	✓	✓	✓								

✓ Available

¹MY22-MY24 row units may choose to retain SeedStar 4 if upgrading from MaxEmerge 5e to ExactEmerge.

²As compared to non-curve compensated planter. John Deere internal study, Illinois.

³Darr, M., Bergman, R. High Speed Planting Technology. Iowa State University Extension and Outreach, Integrated Crop Management. 2020 March 13. <https://crops.extension.iastate.edu/cropnews/2020/03/high-speed-planting-technology>

⁴Based on average savings across 21 fields in an internal study comparing a 60-ft (15.24 m) 24R MaxEmerge 5e planter versus a ground drive planter with mechanical shutoffs. Seed savings will vary depending on field shape and conditions.

⁵Internal John Deere comparison between MaxEmerge 5e row units and components with original MaxEmerge row units and components.

SeedStar™ 5 Monitoring System

Every upgrade — Meter Precision or Ultimate Planter— includes SeedStar 5, the latest John Deere monitoring system for planters. Data moves as fast as you do with 400% faster data flow to your cab. Know what's happening in every row, instantly.

Paired with a G5™ Display and your implement ethernet, SeedStar 5 delivers:

- 400% faster data flow to your cab vs. previous model (1 Hz → 5 Hz)¹
- High-definition, row-by-row planting data in real time
- Quick, real-time adjustments from the cab for uniform emergence
- Field data maps you can view and share in John Deere Operations Center™

¹Data speed increased from 1 Hz to 5 Hz vs. the previous model.

NEW

Fertilizer Upgrades

ExactShot

- Save up to 66% of in-furrow nutrient input²
- Switch between Dosing and Continuous mode from cab
- Apply nutrients directly on seed where they are used most efficiently
- In-furrow option only
- Easy to setup, monitor, and change rates using G5 Display
- Option to convert an existing ExactRate system to ExactShot

²Based on internal tests of a prototype ExactShot system performed across 21 farms in six Midwestern states applying a 5.1-cm (2-in.) dose on seeds with 15.2-cm (6-in.) in-row seed spacing.

COMPATIBILITY:

- 1770/75NT CCS, 1790/95, DB44 to DB90 up to 36 rows
- ExactEmerge or MaxEmerge 5e
- Must have or upgrade to SeedStar 5

Please see Ag Sales Manual for more details around compatibility requirements for ExactShot and ExactRate upgrades. Electric drive row units are required to operate ExactShot or ExactRate fertilizer upgrades. ExactShot is not compatible with planters using FurrowVision.



ExactRate

- Average of 4.3% (up to 12%) reduction in input (fertilizer)²
- Performance up to 10 mph (16.1 km/h)
- Variable rate prescriptions
- Turn compensation
- Row-by-row section control
- Flow detection
- As-applied documentation
- In-furrow or 2x2 application methods available

COMPATIBILITY:

- 1770/75NT CCS, 1790/95, and DB44 up to DB90; model years 2018 and newer

²Runge, Max, et al. "Automatic section control technology for row crop planters." Extension Alabama A&M & Auburn Universities ANR-2217, Oct. 2014. <https://www.aces.edu/blog/topics/crop-production/automatic-section-control-technology-for-row-crop-planters/>



In-furrow application



Frame mounted fertilizer opener
(sold separately)

ExactChem

- Granular electric-drive insecticide solution
- Compatible with electric meter systems
- Precise single-product rate control
- Dispensing at rates of 1.1 – 13.1 lb/acre (1.23 – 14.68 kg/ha)
- Planting speeds of 1.2 – 10 mph (1.93 – 16.09 km/h)
- Row-by-row section control
- Easy set-up and calibration via comfort of cab



COMPATIBILITY:

- 1775NT – 12R, 16R, and 24R/30
- 1720/1725C – 12R/30, 12R/36, 12R/38, 12R/40
- DB60 – 24R/30
- Not Compatible with ExactShot, FurrowVision, DB60 Tracks, or 2.7/3.0 bu hoppers
- SeedStar 4 or SeedStar 5
- Gen4 or Gen5 Display



NEW

Precision Technology

Downforce Automation Powered by FurrowVision™

Downforce Automation is designed to achieve uniform emergence by maintaining the correct planting depth and reducing furrow collapse. Easy to use, this feature automates adjustments for various field conditions, simplifying the process and allowing you to stay in the cab. It accounts for ground contact and soil resistance to effectively optimize downforce.

Please see your local John Deere Dealer for more details around compatibility and requirements for FurrowVision upgrades. Compatibility subject to change.

COMPATIBILITY

- 1775NT, 12R30, 16R30, 24R30
- 1795, 23/24R15, and 31/32R15 (front rank only)
- DB44, 24R22
- DB60, 24R30, 36R20, 47/48R15 (front rank only)
- DB66, 36R22
- DB80 32R30
- DB80 48R20
- DB88 48R22
- DB90 36R30
- DB90 54R20

Requirements:

- Must have, or upgrade to, SeedStar 5 planter monitoring software
- G5 display and implement ethernet
- Not compatible on machines with ExactShot installed
- Not compatible with seed firmer or in-furrow press wheels
- Designed for crops planted deeper than 1 in. (2.54 cm) seeding depth

FurrowVision

A simple yet profound solution to optimizing your yield, FurrowVision™ technology allows you to see how your seed is being planted – without the need to stop and check seed depth or trench quality. It provides near real-time metrics on depth, residue, and furrow condition, boosting productivity and confidence in planting quality while you save time during tight planting windows. Equipped with three in-furrow cameras, it offers a sectional view of the furrow and depth measurements, ensuring optimal planter performance.

FurrowVision



Compaction Management Upgrades

Frame Weight Distribution

- Redistributes weight to wings where it can be used to increase downforce on row units
- Reduces compaction in center section of CCS planters
- Factory-ready solution available for planters that chose the “less” option when ordering from factory
- Bolt-on solution available for planters that did not have a Frame Weight Distribution option when ordered from the factory

COMPATIBILITY:

- 1770/75NT, model years 2005 and newer
- Factory-ready 1775NT 24R30 kits for model year 2016 and newer planters; bolt-on solution for model years 2005-2015
- 1790/1795 31R15 and 32R15, model years 2005 and newer
- Kits only available for 31R15 and 32R15 models
- DB60, model years 2017 and newer; factory-ready kits



PRODUCTIVITY AND CONVENIENCE

Ultimate LED Lighting Kit

- LED lights match the color temperature used in the lighting for Premium and Ultimate Visibility packages on John Deere tractors
- Lights mounted on the front hitch to fill the area between the tractor and planter with light, accommodating tractors that may not have enough lighting to fill this void
- In-tank mounting for full tank illumination for seed level monitoring

- Added illumination under the bar on each row-unit for better detection of obstacles, plugs, and more¹
- Added illumination to the ends of the planter bar for better visibility around the entire machine¹
- Robust rear lighting enables in-field planting quality audits and in-cab monitoring
- Improved visibility during row-unit service¹

COMPATIBILITY:

- 1770/75NT and 1795, model years 2005 and newer
- DB planters, model years 2012 and newer



¹ Compared to a planter without LED lights

Color Coded Hydraulic Grips

- Easily connect planter hydraulics to proper tractor ports
- Aluminum handles with John Deere logo and extend/retract icons etched into metal



Central Commodity System (CCS) Conversion Kit

- 55 bu (1,938 L) CCS tank
- Only available for 12- and 16-row 1720/25 non-CCS kits adding electric drive row-units

Hoppers

- 1.6 bu (56.38 L) for ExactEmerge and MaxEmerge 5e upgrades
- 3.0 bu (105.72 L) for MaxEmerge 5e upgrades
- 2.7 bu (95.15 L) for ExactEmerge upgrades

DOWNFORCE

Individual Row Hydraulic Downforce (IRHD)

- Increase even plant emergence due to increased contact of the row unit to the ground²
- Consistently place seed at desired depth regardless of soil conditions
- Closed loop downforce system reacts quickly on an individual row basis to changing soil conditions
- Adjusts up to five times per second
- 58% faster than pneumatic systems³
- Compatibility: Electric Drive Planters
- Existing Gen 1 IRHD Systems can be upgraded to Gen 2

¹ Compared to a planter without LED lights

² Doerge, T., Jeschke, M., and Carter, P. Planting outcome effects on corn yield. Crop Insights, Vol. 25, No. 1. DuPont Pioneer.

³ Compared to pneumatic system. John Deere internal study, Illinois.



Active Pneumatic Downforce

- Maintains margin set from display across sections of planter rows
- Uses air bags to increase/decrease pressure on sections of planter rows

CLEANING AND CLOSING

CLOSING SYSTEMS

Pneumatic Closing Wheels

- Improve seed-to-soil contact for uniform emergence and better yield potential
- Adjust settings in seconds from the cab
- Operators are notified when closing pressure is not met, unlike spring systems
- Available as part of Ultimate Planter Upgrades or as a modular upgrade

Mechanical Closing Wheels

- Manually set using handle on each row



ROW CLEANERS

Easy-Adjust Row Cleaners

- Helps keep furrow free of debris
- Adjustable from display while planting
- Pneumatic up and down pressure
- Three presets for different field conditions
- Available as part of Ultimate Planter Upgrades or as a modular upgrade

CLOSING WHEEL OPTIONS

Rubber Closing Wheels

- Standard closing wheel from factory

Cast Iron Closing Wheels

- Heavier wheel for more aggressive soil contact

Yetter Twister® Closing Wheels

- Break up soil compaction
- Rounded center-ring design ensures consistent trench closure

Your Air Cart, UPGRADED

PRECISION UPGRADES



AccuRate Metering System

Seed up to 8x more accurately¹ with individually controlled AccuRate stainless steel electric meters. Made of 316-grade stainless steel, AccuRate meters provide better corrosion resistance than 304-grade stainless steel, lowering maintenance and repair costs.

- Start and stop each meter with SectionCommand™ Pro
- Accurately meter the correct amount of product on a curve with curve compensation
- Achieve long-term corrosion resistance with our anti-static composite primary tubes, which also help to minimize crop buildup. This helps provide consistent seed flow to your tools, driving accurate seeding rates
- Available with the industry-exclusive EZCal system that saves time and steps by sending calibration numbers automatically to the cab display

Your Precision Upgrade kit will contain all the components to fully upgrade your air cart, such as, meters, harnesses, controllers, electric power generation, air plumbing, G5e Cart Side display, and optional EZCal system.

COMPATIBILITY:

- C650 and C850 Air Carts, model years 2017-2024
- 1910 Air Carts, model years 2005-2024

EZCal™

EZCal is like pressing the easy button on your air cart calibration. With a push of the button on the side of the cart, EZCal automatically calculates and sends the meter displacement value to the cab eliminating user error. This lets you calibrate 75% faster² than previous models and 45% faster³ than the leading competitor's calibration times.



¹ Based on seeding with an 8 primary run air cart and an 80-foot (24.4-meter) air seeder. Prescription zones would improve from 80-foot zones to 10-foot (3-meter) zones.

² Based off internal testing of a current production bag calibration on a 1910 air cart taking 10 minutes to calibrate compared to a EZCal-equipped air cart taking 2 minutes and 15 seconds.

³ Based off internal testing of a Bourgault air cart calibration taking 4 minutes compared to a EZCal-equipped air cart taking 2 minutes and 15 seconds.



NEW *RelativeFlow™ Blockage*

We all know it. Blockage causes skips. Skips reduce yields. And reduced yields cost money. That's why you need RelativeFlow Blockage, a Precision Upgrade exclusively from John Deere. Using sensors you install on your current air cart towers, RelativeFlow Blockage continually monitors, detects, and prevents seed or fertilizer flow blockages in near real time right from inside the tractor cab — so you can catch problems before they become costly.

- Spot developing blockages before they start causing skips
- Minimize downtime during tight seeding windows
- Use seed & fertilizer more efficiently to reduce input & costs
- Get same monitoring technology found on new factory equipment at a fraction of the cost
- Works with your current display – no need to buy additional one

Blockages don't always announce themselves — and by the time uneven emergence shows up in the field, the damage is done. RelativeFlow Blockage helps protect against yield loss from skips, wasted inputs from uneven application, and costly downtime by catching issues early and keeping you moving.

COMPATIBILITY:

- 1910 Air Carts, model year 2014 or newer
- C650/C850 Air Carts, model year 2017 or newer
- C350T/L to C1100T Air Carts, model year 2025 or newer
- Compatible with carts equipped with an AccuRate Meter Precision Upgrade
- GreenStar™ 3 2630, Gen 4, and G5 Displays



Your Sprayer, UPGRADED

PRECISION UPGRADES

See & Spray™ Premium

- Spray fallow fields with no additional cost⁴ **NEW**
- See, target, and kill in-season weeds using advanced cameras and machine learning
- Select targeted or broadcast applications
- Cut herbicide usage by more than 50%¹
- Reduce water usage and tender stops
- Reduce crop stress and improve yields²
- Delivers results at operating speeds up to 15 mph (24.1 km/h)³
- Compatible with pressure recirculation and product reclaim (model year 2022 and newer)

COMPATIBILITY:

- R4030 to R4060, 400 and 600 Series; model years 2018-2026
- Boom lengths of 90 ft (27.4 m), 100 ft (30.5 m), or 120 ft (36.6 m)
- Requires ExactApply and BoomTrac Pro 2 with See & Spray compatible height sensors
- Requires a G5^{Plus} integrated display, a StarFire 6000 or newer receiver, and must have a RTK correction source (SF- RTK or Radio RTK)
- Requires steel booms and stainless steel plumbing
- Not compatible with Direct Injection



NEW Use See & Spray in fallow applications at no additional cost⁴

Cleaner fields start early... in your fallow fields. That's why, for any sprayer equipped with See & Spray – past, present, and future – there's no additional cost for fallow application passes.

Starting in 2027 with your cameras always on during application, you can use See & Scout to automatically record and stream valuable ag data to your John Deere Operations Center™ account. There, you can leverage valuable insights - including weed pressure maps, corn stand counts and other field data at no additional cost.

Also beginning In the 2027 field season, purchase an annual license and you'll also gain near real-time variable rate capability of detected green biomass, allowing you to spray product where it's needed most.

And the crop lineup keeps getting bigger, too. Peanuts, sugar beets, milo, canola, wheat and barley are now available on See & Spray Premium and Ultimate systems.



See what your sprayer could be.
Scan here.



¹ Results based on internal John Deere strip trials in corn, and soybeans in Arkansas, Nebraska, and Texas, in typical growing conditions, with varying weed size, crop canopy, and field conditions, using targeted spray of non-residual herbicide only, and using current software/algorithm at time of trials. Results vary based on crop. Individual results will vary.

² Claims regarding yield increases and reduced crop damage from See & Spray Ultimate are based on research sponsored by John Deere and conducted by third-party organizations across seven states. Findings indicated an average yield increase of +131 kg/ha (+2.0 bu/A) in soybeans with targeted herbicide applications compared to traditional broadcast methods, along with reduced crop injury and improved health metrics. Results may vary based on specific conditions, including local practices and environmental factors. Economic examples are illustrative and may not apply universally. For detailed findings, refer to the complete study, including additional research from Beck's Hybrids (Beck's 2024 - www.beckshybrids.com/resources/pfr-studies/2024-multi-location-soybean-sprayer-application-study-see-and-spraytm).

³ New for model year 2026. Premium machines can go 15 mph (24.1 km/h) during with the row applications. 15 mph (24.1 km/h) speeds not approved for ULM or ULD nozzles. Spray buffer length must be set to small for over 12 mph (19.3 km/h) speeds.

⁴ See & Spray in-crop application passes require the purchase of a renewable license. See & Spray fallow applications require no additional license. See your John Deere Dealer for details.

ExactApply

- Premium Individual Nozzle Control: six (6) nozzle turret with multiple modes of operation maintains rate and pressure to reduce overapplication, crop burn, and off-target drift
- Cover up to 20 more acres (8.09 more hectares) per hour (based on a 2-mph (3.22 km/h) increase in operating speed) with more consistent spray deposition¹
- Save up to 12% on herbicides and pesticides¹
- 15-Hz pulse-width modulation (PWM) pulses one solenoid for more consistent pressure and droplet size over a wider range of ground speeds and application rates
- 30-Hz PWM pulses both solenoids at 15 Hz for more thorough coverage during high-volume applications, like liquid fertilizer
- AutoSelect A/B mode automatically switches between two nozzles to maintain a constant spray pressure while you're spraying conventionally
- Turn compensation mode decreases the spray rate on the inside of a turn while increasing the rate on the outside, ensuring consistent application across the entire width of the boom
- ExactApply Multi-Rate enhances nozzle capabilities by enabling the delivery of multiple rates across the eleven sections of the boom in a single pass, regardless of the boom length²
- Compatible with pressure recirculation and product reclaim

COMPATIBILITY:

- R4030 and R4038, model years 2014-2021
- R4045 model years 2015-2021
- R4044 and R4060, model years 2019-2021
- 400 and 600 Series, model years 2022-2026

¹ Based on John Deere Operations Center data shared with consent by customers, comparing sprayer operation with and without ExactApply and INC Pro in 2023 and 2024.

² Multi-Rate available on model year 2022 and newer sprayers equipped with See & Spray or that have a model year 2026 and newer precision upgrade kit for ExactApply. Necessary harnessing for kits prior to model year 2026 without See & Spray is available through parts.



Individual Nozzle Control Pro

- Offers a step up from Section Control, allowing for more precise application
- Save up to 12% on herbicides and pesticides¹
- Section size reduced to individual nozzle turrets, reducing overlap and overspray
- Turn compensation by individual nozzle
- 15-Hz single pulse-width modulation (PWM)
- Combination of proven existing standard flow hardware with increased capability matching what is shown for other nozzle control
- Compatible with pressure recirculation and product reclaim



COMPATIBILITY:

- R4030 to R4060, 400 and 600 Series; model years 2014-2026
- 4730 and 4830 model years 2008-2014
- Boom lengths of 80 ft (24.4 m), 90 ft (27.4 m), 100ft (30.48 m), and 120 ft (36.6 m) **NEW**



Individual Nozzle Control Heavy Duty

- Designed for high-viscosity and suspended solid fertilizers and chemicals
- Allows accuracy of nozzle control down to the individual nozzle, helping reduce overlap and overspray, reducing overall chemical usage and overapplication
- Utilizes the John Deere five-position high-flow nozzle body
- Flow is controlled by a ball valve and powered open and closed by a small electric actuator on each nozzle
- Section width equivalent to the nozzle spacing when used with John Deere Section Control
- Compatible with pressure recirculation and product reclaim

COMPATIBILITY:

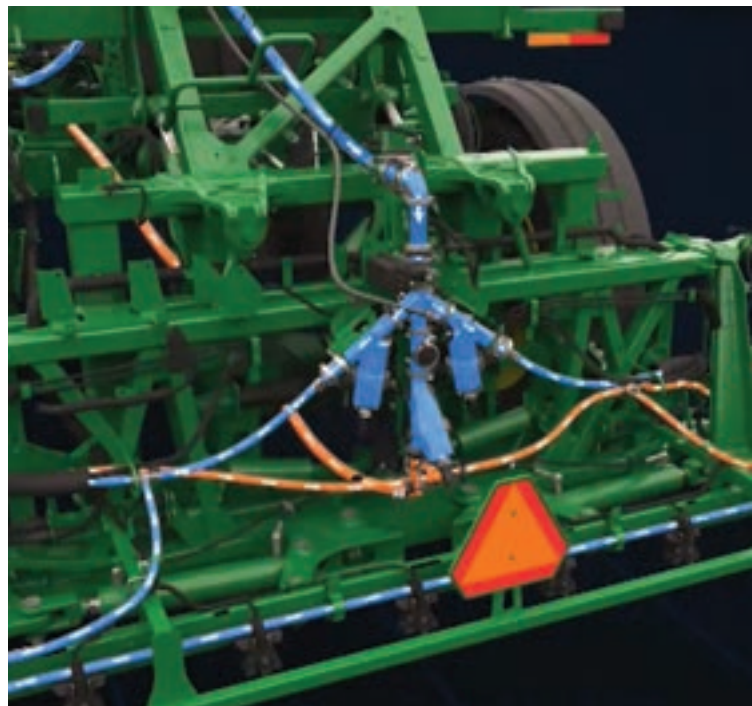
- R4030 to R4060, 400 and 600 Series with 120 ft (36.6 m) steel booms, model years 2018 and newer
- LS475 and LS20 Liquid Application System for F4365/800R with boom lengths of 90 ft (27.4 m); model years 2021-2026

Pressure Recirculation and Product Reclaim

- Pressure recirculation pushes product through the sprayer booms with a three-way valve, keeping solution from settling and delivering a consistent product to every nozzle
- Product reclaim pushes air through the sprayer lines and moves the solution back into the center feed tank
- Save product with pressure recirculation – up to 30 gal (113.6 L) per boom prime post boom purge¹
- Save up to \$600 a day¹ with pressure recirculation 10 times a day, coupled with approximately 22.5 gal (85.2 L) of solution savings with product reclaim one to two times per day
- Reduce crop damage from residual chemical buildup
- No tank modifications are needed

COMPATIBILITY:

- R4030 to R4060, 400 and 600 series; model years 2018-2026



LED Boom and Vehicle Lighting

- Help improve visibility around the machine and increase confidence when operating in less-than-ideal light situations
- **Vehicle work lighting package:**
 - 20 LED lights added to the hood, cab roof, boom cradles, left-hand platform, fill station, and right-hand fuel tank
- **Boom lighting package**
 - **Tip edge light:**
 - Illuminates a line on the ground aligned with end of the boom
 - Installs on left-hand and right-hand boom tips
 - Compatible with 90 ft (27.4 m), 100 ft (30.5 m), or 120 ft (36.6 m) steel boom
 - Compatible with fence row nozzles and foamers
 - **Spray pattern illumination lights:**
 - Located on inside of inner wings
 - Faces outward
 - Can be used with ExactApply spray pattern lighting

COMPATIBILITY:

- Vehicle lighting - R4030 up to R4060; model years 2014-2021
- Boom lighting - R4030/408R up to R4060/616R; model years 2014-2026

¹ The dollar amount is in USD. Assumes 30 gal (113.6 L) of residual product in the system at 10 gal/acre (93.5 L/ha) and \$20 per acre 10 times per day. Individual results will vary based on application rates.

² According to a study by the University of Madrid in April 2025, which found a 50% chemical & water reduction in vineyards and a 67% chemical & water reduction in orchards.

BoomTrac Pro 2

- Offers a 22% greater spray accuracy and 5x increase in the amount of time the boom maintains its target height (compared with the previous BoomTrac Pro system)
- Inertia-monitoring sensor helps correct chassis roll
- Helps ensure accuracy in product application and reduces drift, even in hilly or rough conditions
- Requires BoomTrac Pro System, if not already installed, in order to operate
- Precision Upgrade kits come See & Spray ready

COMPATIBILITY:

- R4030 to R4060, 400 and 600 series; model years 2018-2026

Boom Extensions

- Increasing boom length covers more ground in a single pass, helping improve acres covered per day
- Going from 90 ft (27.4 m) to 120 ft (36.6 m) booms could see an overall improvement of 135 acres (54.63 hectares) accomplished in a day
- Boom extensions allow 90 ft (27.4 m) and 100 ft (30.5 m) existing booms to be upgraded to 120 ft (36.6 m) steel booms
- Kits include new inner, outer, and breakaway sections
- Both wings come from the factory assembled, helping reduce installation time

COMPATIBILITY:

- R4030/408R up to R4060/616R; model years 2014-2026

Smart Apply® Intelligent Spray Control System™

With Smart Apply installed on your blast sprayer, only your foliage receives a targeted amount of spray, reducing waste and preventing unwanted drift or runoff. That gives you greater savings and improved on-farm sustainability, whether you're growing apples, oranges, almonds, pecans, pistachios, grapes, or other specialty crops.

- Up to 67% reduction in chemical and water use²
- Up to 87% less airborne drift²
- Up to 93% less runoff²
- Automatically collect data for analysis, compliance, and planning



Your Combine, **UPGRADED** PRECISION UPGRADES

Unlock the full potential of existing equipment with Precision Upgrades, available for X9, S7, S700, and S600 Combines.

Cross Auger Shut Off

- Cross augers engage after unloading auger has engaged reducing overall system load
- Cross augers disengage prior to unloading auger to allow unloading auger to empty
- Reduces grain weight in the unloading auger
- Improves auger start up and decreases wear and tear

COMPATIBILITY:

- S760, S770, S780, and S790; model years 2018-2024
- S7 600, S7 700, S7 800, S7 900; model years 2025 and newer

Adjustable Auger Spout

- Prevents grain dribbling in the field and during transport
- Spout adjustment is controlled from the multifunction lever and is easily programmable to multiple presets
- Easier to unload into grain cart or trailer
- Fully integrated into John Deere controls and displays

COMPATIBILITY:

- S760, S770, S780, and S790; model years 2018-2024
- S7 600, S7 700, S7 800, S7 900; model years 2025 and newer



Field Transport Position



Road Transport Position





Auto Unload

Upgrade your combine with Auto Unload, the latest enhancement to John Deere's Machine Sync technology. By adding a stereo camera and controller, Auto Unload brings next-level automation to your harvest operation.

- Focus on other harvesting tasks and worry less about the location of the grain cart
- Hands-free forward and backward grain cart movement during the unloading process allows you to automatically achieve an evenly distributed grain cart load every time
- Top-off mode ensures the grain cart is filled consistently and efficiently, which is designed to maximize grain cart capacity
- Operator must manually start and stop the unloading process
- Machine Sync licenses and high-connectivity antennas are required on the combine and tractor

COMPATIBILITY:

- S700 and S7 Series, model years 2020 and newer
- X9 1000 and X9 1100, model years 2021 and newer
- Auger lengths of 26 ft (7.9 m) or greater
- Not compatible with unloading auger extensions

LED Light Kit

- The kit provides improved sight in low-visibility conditions
- Outer cab work lights, rear discharge lights, and unloading auger light are brighter than standard LED lights for better visibility

COMPATIBILITY:

- S660, S670, S680, and S690; model years 2012-2017
- S760, S770, S780, and S790; model years 2018-2024

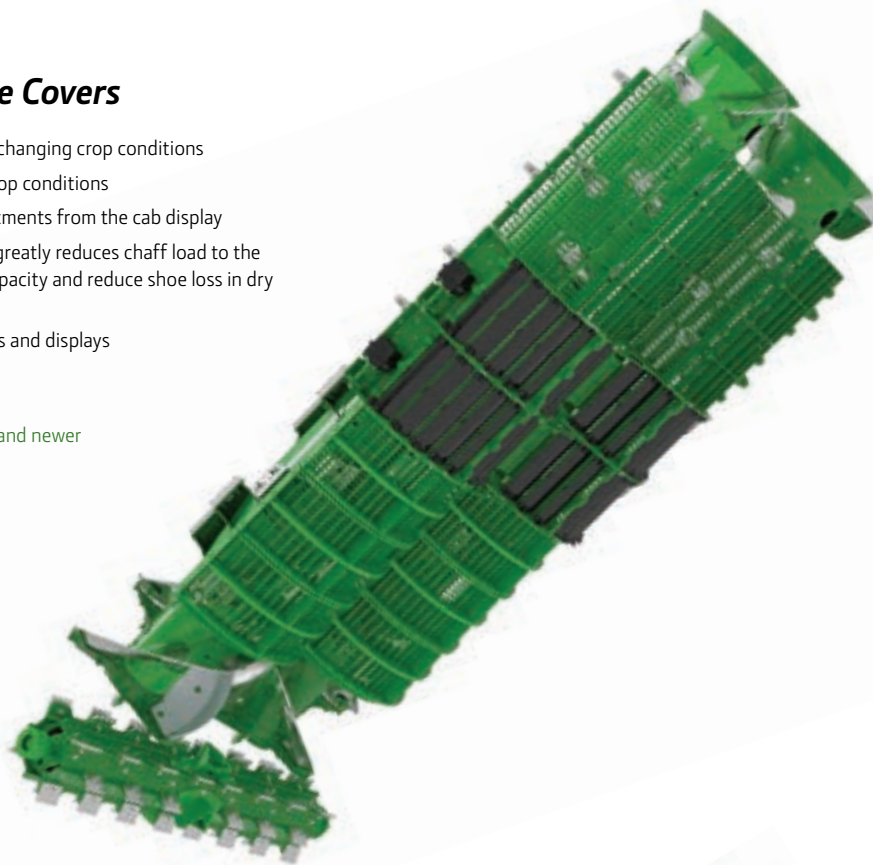


Remote Separator Grate Covers

- Open or close covers from the cab with changing crop conditions
- Maximize ability to harvest in varying crop conditions
- Improves ability to make combine adjustments from the cab display
- Increases overall combine capacity and greatly reduces chaff load to the cleaning shoe; this can increase shoe capacity and reduce shoe loss in dry conditions
- Fully integrated into John Deere controls and displays

COMPATIBILITY:

- X9 1000 and X9 1100; model years 2021 and newer

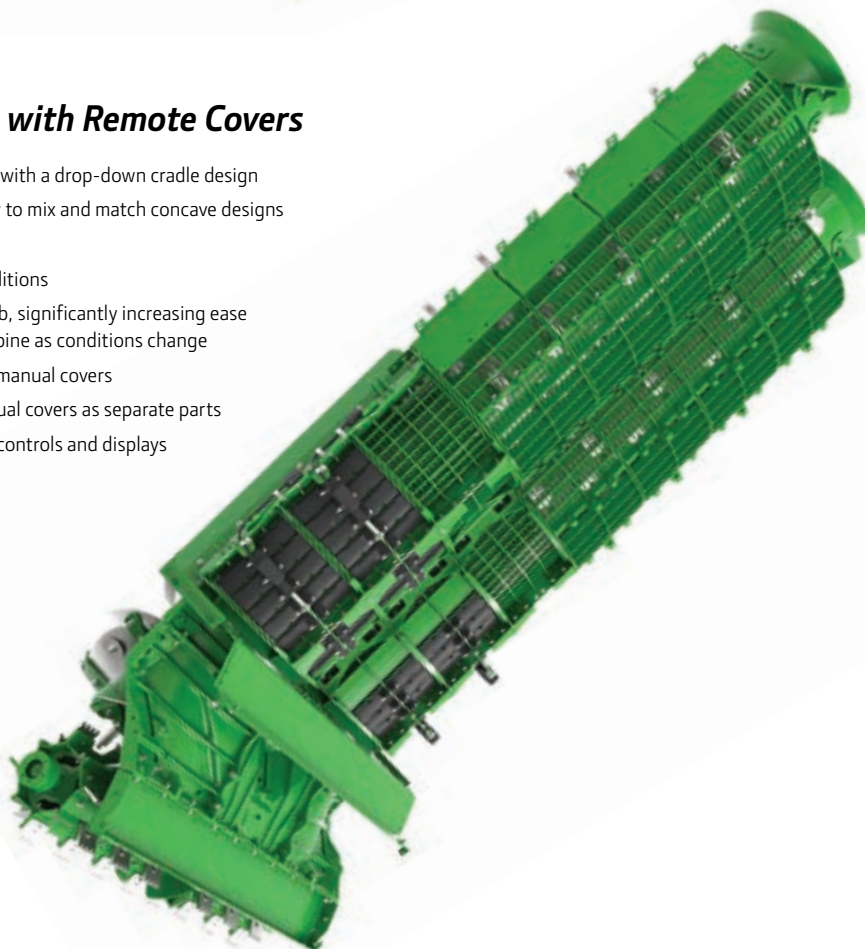


Tru-Thresh™ Concaves with Remote Covers

- Easy to handle and change concaves with a drop-down cradle design
- Added threshing area with the ability to mix and match concave designs
- Improve the natural threshing action
- Helps to harvest in varying crop conditions
- Open or close the covers from the cab, significantly increasing ease of use and optimization of your combine as conditions change
- No need to stop to install or remove manual covers
- Eliminates handling and storing manual covers as separate parts
- Fully integrated into the John Deere controls and displays

COMPATIBILITY:

- X9 1000 and X9 1100;
model years 2021 and newer



COMBINE TECHNOLOGY PACKAGES

Premium Technology Package **NEW**

Gain confidence by monitoring automation using a G5^{Plus} Display and ActiveVision™ cameras mounted on the clean grain and tailings elevators .

Builds on Select with advanced harvest automation to bring more value to your combine. Includes Core, such as variable fan actuators and ActiveVision™ cameras.

- Enables Terrain Settings Automation and Harvest Settings Automation
- Automatically adjusts five key internal combine settings to crop, field, and rolling terrain variability
- Improves grain quality and reduces grain loss
- Requires Premium Combine License to unlock G5 display automation and all G5 Advanced core applications



YOUR COMBINE, UPGRADED



Ultimate Technology Package **NEW**

Enables smarter, more consistent combine performance and actionable automation insights for improved profitability. Includes everything in Premium, PLUS Forward Cameras and Auto Unload stereo camera.

- Paired with Ultimate Combine License to unlock full automation capabilities
- Predictive Ground Speed Automation with Harvest IPM uses forward-looking crop biomass to dynamically adjust ground speed
- Delivers up to 20% higher productivity¹
- Auto Unload automates grain cart positioning during on-the-go unloading

COMPATIBILITY:

- S7 600, S7 700, S7 800, and S7 900; model years 2025 and newer
- X9 1000 and X9 1100; model years 2025 and newer

¹Claim based on same model running in the same crop over the same amount of acreage, one with Predictive Ground Speed Automation on and one with it off.

Your Tractor, UPGRADED

PRECISION UPGRADES

NEW



U.S. ONLY

John Deere Autonomy

It's here – an autonomous tillage solution for your tractor that lives up to John Deere standards. Precision Upgrades now offers a kit that allows you to step out of the tractor and let it do the work for you, giving back your time, your farm, and your labor.

- Redirect labor to more critical tasks while your tractor does the tillage
- Enhances short operating windows by extending working hours without working longer yourself
- Do more work with existing resources
- Monitor your machine's work almost anytime, anywhere from Operations Center Mobile

TRACTORS COMPATIBLE WITH AUTONOMOUS TILLAGE KIT:

- Model year 2020.5 and newer 8R/8RX Tractors
- Model year 2022 and newer 9R/9RX Tractors

TILLAGE TOOLS COMPATIBLE WITH AUTONOMY*:

- Model year 2016 and newer 2730 Combination Ripper, 14-26 ft **NEW**
- Model year 2017 and newer 2230FH, 31-69 ft
- Model year 2017 and newer 2230LL, 25-60 ft
- Model year 2019 and newer 2430CP, 21-60 ft
- Model year 2019 and newer 2660VT, 25-49 ft
- Model year 2023 and newer 2680H, 15-45 ft
- Model year 2026 and newer HSD (factory only)
- Model year 2026 and newer Coulter Chisel (factory only)



*Only available in the U.S.

Rear Implement Ethernet

- Enables high bandwidth communication between the tractor and implement
- With an increase to 1 GB/s of CAN speed (previously 250 kb/s), tractors and implements can communicate high-definition data faster, resulting in better decision-making for customers and dealers
- Rear Implement Ethernet is required for SeedStar 5 and future precision; a building block to John Deere's autonomous solution
- Ethernet switch, connector in cab, connector on back of tractor, brackets, harnessing is included
- Current implement offerings requiring ethernet: implements with high data flow requirements (electric drive planters)



Are you autonomy ready?

Take a quiz to find out.



SUREPOINT™ AG SYSTEMS

SurePoint Ag Systems was founded in 2007 to help producers become more efficient by applying the right product, in the right place, at the right rate. SurePoint products work with many brands of implements and integrate with most existing technology. Whether John Deere, CaseIH, AgLeader®, Trimble®, Raven, they offer a wide range of compatibility options.

SurePoint Ag Systems operates as an independent business and each John Deere dealer has access to sell SurePoint products.

PLANTING & SEEDING TECHNOLOGY

Upgrade your planter with advanced, ISOBUS-controlled systems that seamlessly integrate with your existing equipment. From seed metering to row unit control, row cleaning, and closing wheels, we deliver smarter solutions to optimize every pass in the field.



FERTILIZER APPLICATION SYSTEMS

SurePoint starts by understanding your variables and then delivers custom-configured application systems for all types of farm equipment. Not all fertilizers are created equal. Their team of experts has developed a high level of expertise, bringing together the right components to successfully achieve your application needs. They have a range of solutions from simple and basic, to some of the most advanced systems providing individual rate control of each row.



SPRAY TENDER SYSTEMS

QuickDraw® is a fully automated sprayer tender system. Start by creating a recipe that is saved and used every time you load that mix of chemicals. Enter the application rate/acre you will be spraying and the size of load you need, either in total gallons or total acres to spray. QuickDraw® calculates the correct amount of each chemical in the batch and automatically measures and loads each chemical.

Pair QuickDraw® with the Arsenal™ Spray Trailer for an all-in-one, turnkey tendering system purpose-built for sprayer operators. Unlike a standard trailer retrofitted for the job, the Arsenal™ arrives outfitted with QuickDraw® and ready to hit the field with customizable tank sizes and load-out configurations.

The QuickDraw® Swing Down Eductor allows operators to work at ground level. Add manually measured products including dry AMS through the Swing Down Eductor. Also available with ChemBlade®, for splitting, dumping, and rinsing jugs.



Ag Leader® is a registered trademarks of Ag Leader Technology Incorporated.

Case IH is a registered trademark of CNH Industrial America LLC.

Trimble is a trademark of Trimble Navigation Limited, registered in the United States and in other countries.



Products Complementary to John Deere:

- Dual Liquid Product on Planters
- QuickDraw for easy and accurate See & Spray™ tendering
- Precise NH3 Control and Monitoring with Torpedo and Sentinel NH3

ANHYDROUS APPLICATION SYSTEMS

The Sentinel™ NH3 system allows in-cab monitoring of anhydrous to every row of the applicator.

The Torpedo™ Cooler is the central piece of the SurePoint Anhydrous Ammonia application system. It is a high capacity, extremely accurate, efficient heat exchanger. Couple the cooler with all plumbing and distribution components to get anhydrous from the tank to the shank.



ADDITIONAL OFFERINGS

Two Sentinel Controller Options

1000 Model

- Single Product Functionality
- Utilizes SurePoint Ag's Level 1 ECU
- Pair Up to 3 ECU's for Multiple Functions

2000 Model

- 4 Product Functionality
- Utilizes SurePoint Ag's Level 2 ECU
- Can Be Fully Customized to Your Operation

- **ISOBUS Control** : New in 2024: GFX controlled via cab display with Reflex ISOBUS platform.
- **Frame Mounted** : Toolbar mounting isolates row cleaner movements from the row unit allowing for more consistent seed placement.



CUSTOM PRECISION UPGRADES

Custom Precision Upgrades are an option to explore when a standard offering is not available. A team of engineers will work with you on your request to evaluate if your specific needs can be met with a Custom Precision Upgrade.

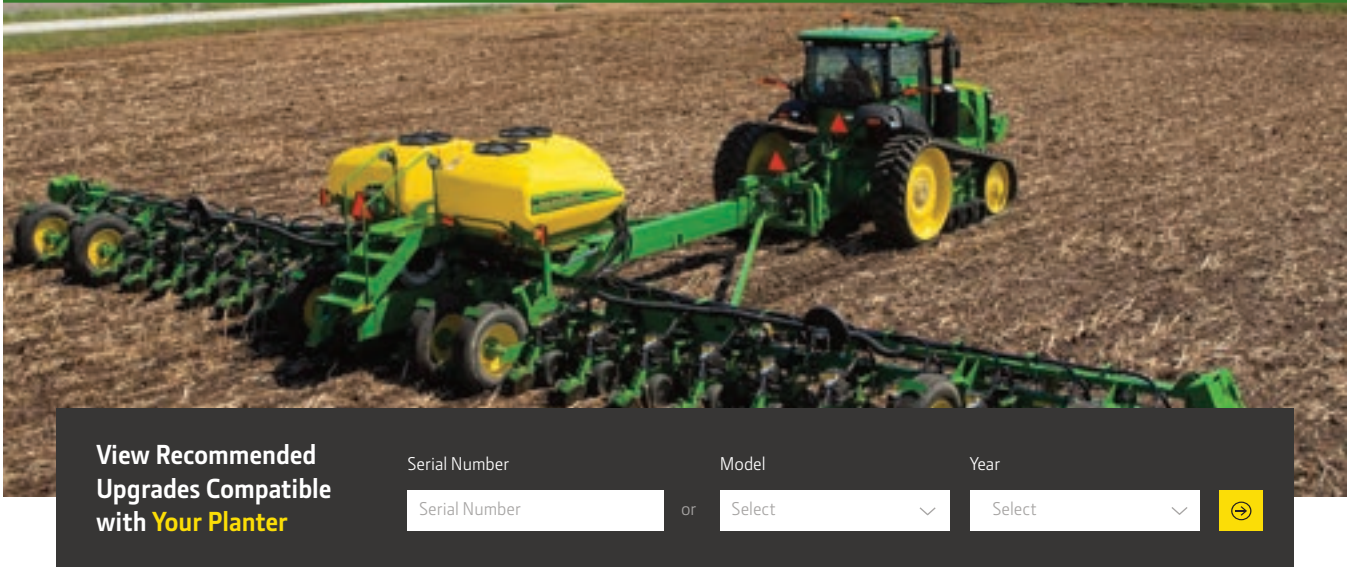
Reasons to submit a custom request may include, but are not limited to:

- 1) No standard kit offering for the model year of equipment to be upgraded*
- 2) Equipment modifications bring uncertainty around compatibility*
- 3) Non-supported configurations that limit compatibility, such as unique row counts or spacing, or utilization of Hydraulic Planter Power Generator for ExactEmerge*

The customs team works toward the goal of evaluating the request, and if possible, providing a quote back within a week. We want this process to be as seamless as possible and are confident there are product offerings that we can customize for your needs.



CHECK YOUR COMPATIBILITY



Find the precision upgrade that's right for you with our Precision Upgrade compatibility tool.

Input the serial number or model number and year of your current planter to see what upgrades are available.

Available for planter and sprayer upgrades.



For Precision Upgrades compatible to your **planter**, scan this QR code or visit JohnDeere.com/PlanterUpgrades and JohnDeere.ca/PlanterUpgrades



For Precision Upgrades compatible to your **sprayer**, scan this QR code or visit JohnDeere.com/SprayerUpgrades and JohnDeere.ca/SprayerUpgrades

UPGRADE TODAY. PAY LATER.

With John Deere Financial Multi Use Account™ financing, you can invest in eligible precision upgrades now while deferring payments and interest with Buy Now, Pay Later options designed to support your seasonal cash flow needs. With finance solutions, such as HARVEST TERMS™, the Multi-Use Account offers flexible solutions to help you manage operating expenses.



View the current Multi-Use Account™ precision upgrade offer

EXACTEMERGE UPGRADED

INVEST IN PRECISION. PAY OVERTIME.

John Deere Financial installment options provide an easy way to manage the cost of precision upgrades overtime. Installment financing allows you to spread the cost over multiple scheduled payments, helping align technology investments with your operation's cash flow — while putting advanced precision solutions to work today.

Your John Deere dealer can help you evaluate available John Deere Financial financing options and determine the approach that best fits your operation's needs.

Ask your dealer for details and program eligibility.

John Deere Precision Upgrade Kits are sold as complete goods from John Deere dealers. Precision Upgrade Kits come with a 1-Year factory warranty. Terms, conditions, exclusions, and warranty limitations apply.

Contact your dealer for more information.

For more information about
available Precision Upgrades
visit JohnDeere.com or JohnDeere.ca

